



IN220800535V02_US

440-033V00



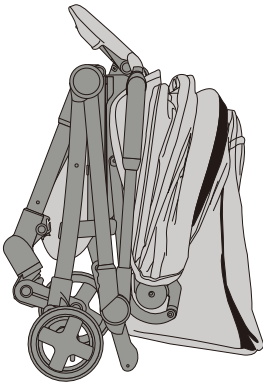
Pushchair

* Suitable for children of 0-36 months.

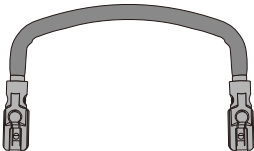
IMPORTANT, RETAIN FOR FUTURE REFERENCE: READ CAREFULLY

User's Manual

PARTS

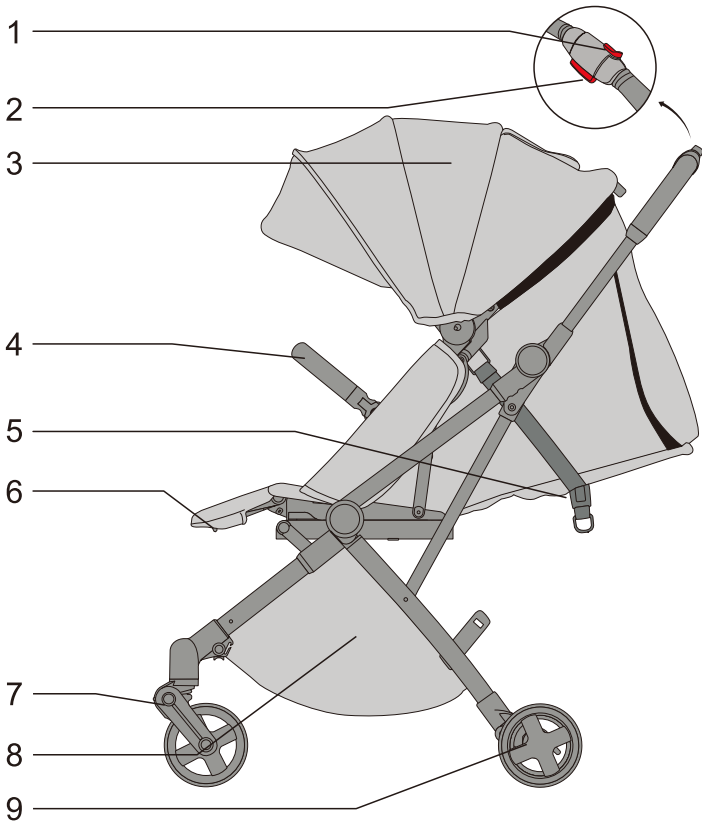


A. Main frame X 1



B. Front armrest X 1

PARTS



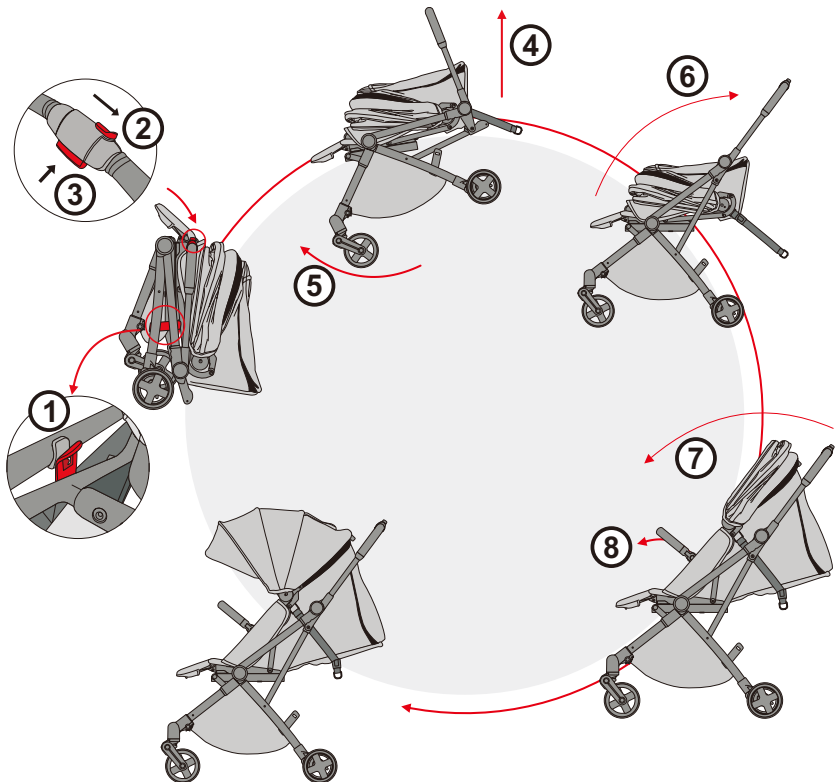
- 1. Second lock for folding
- 2. Folding button
- 3. Canopy
- 4. Detachable front armrest
- 5. Backrest strap adjustment group

- 6. Foot pedal adjustment handle
- 7. Front wheel assembly
- 8. Storage basket
- 9. Rear wheel assembly

Instructions

Unfolding the cart

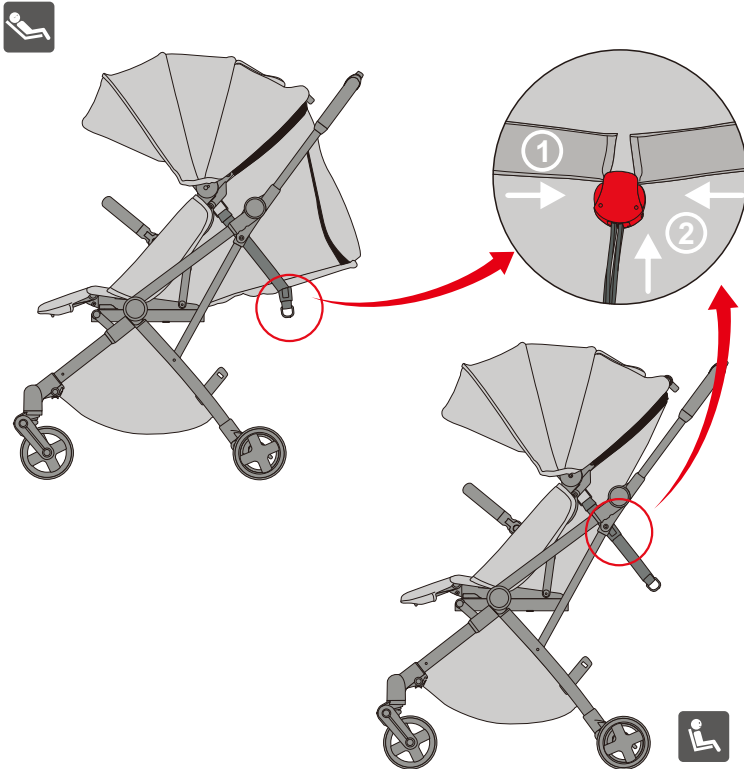
1. Open the retracting hook , use your thumb to push the retracting second lock ② in the direction shown, then press the folding button ③.
2. Lift up and push the handle ④, then open the main frame ⑤ while lifting.
3. After unfolding, turn the seat up in the direction of the arrow.
4. Unfold the seat canopy ⑦ and adjust the front armrest to the upright position.
5. The pushchair is unfolded.



Instructions

Backrest adjustment

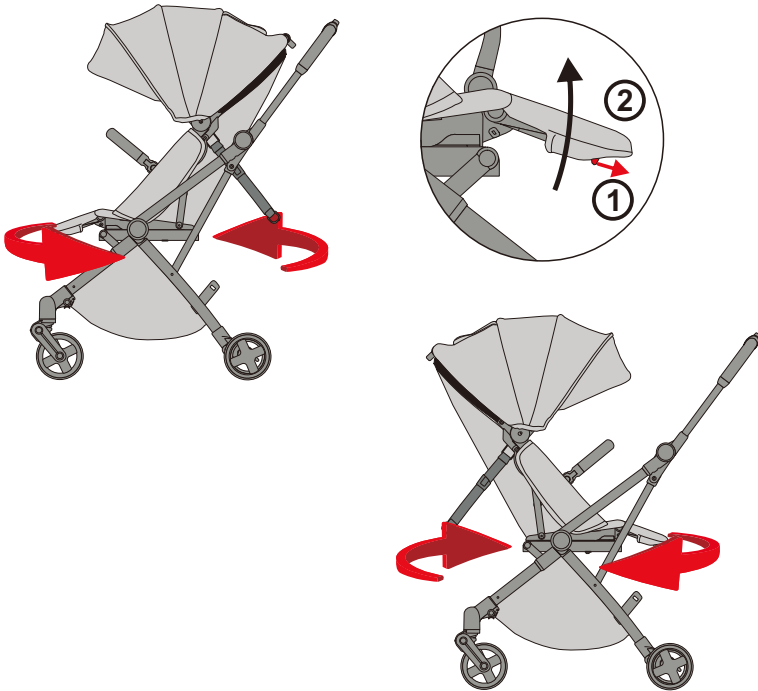
1. When the pushchair is lying flat, find the recliner lever on the back of the backrest.
2. As shown in the figure, pinch the lever ① with one hand, and push the backrest adjustment zipper with the other hand ② to increase or decrease the backrest angle.
3. Tighten the backrest adjustment zipper upwards to adjust to a sitting position. Doing the opposite will return the pushchair to its flat position.



Instructions

Rotating the seat

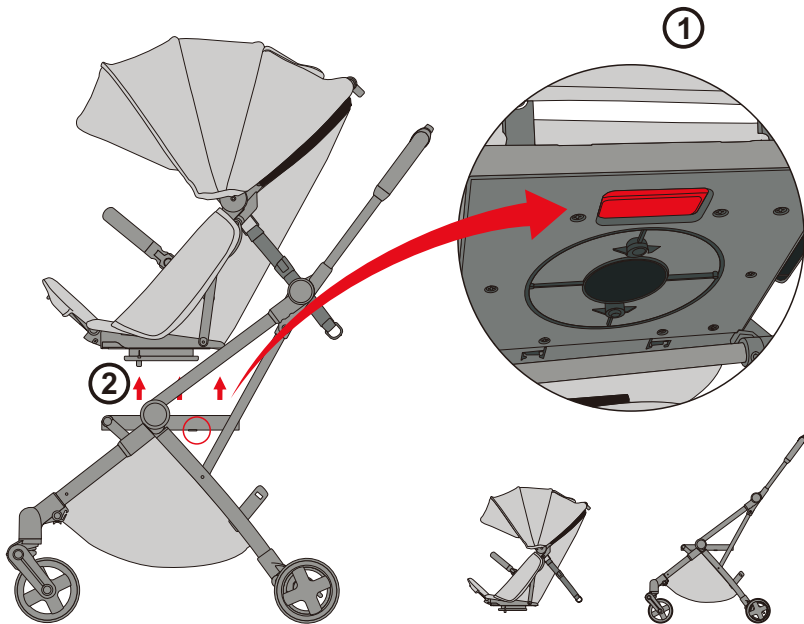
1. The seat does not need to be disassembled, it can be directly rotated and adjusted.
 2. As shown in the figure, stretch the adjusting handle under the seat pedal outward ①, then lift the pedal upward to an upright position ②, so it can rotate.
- Note: The seat can only rotate when it is upright.



Instructions

Seat disassembly

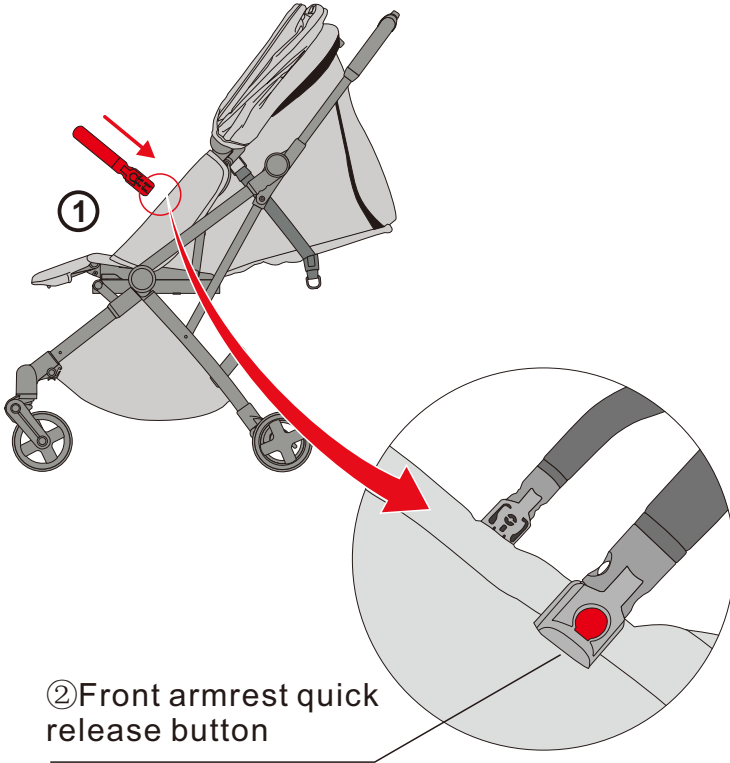
1. When disassembling the seat, pinch the handle ① under the seat, then directly lift the seat to separate from the frame ②.
2. When installing, just snap the seat directly onto the frame.



Instructions

Front armrest removal and installation

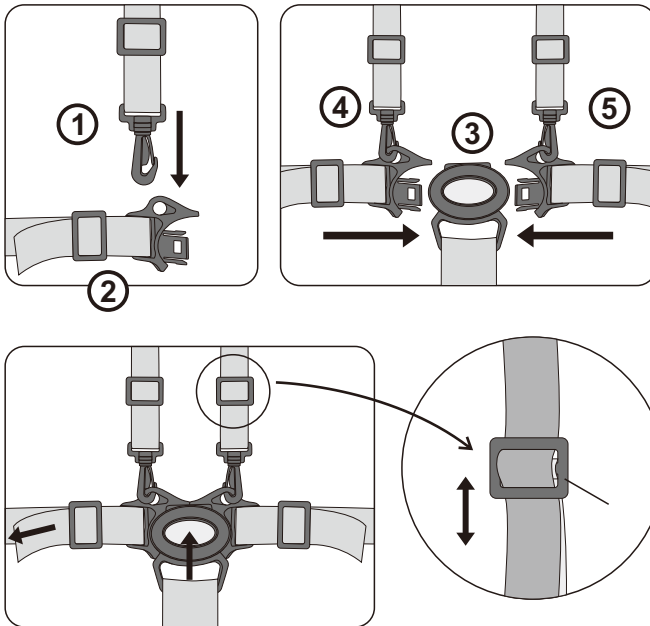
1. Front armrest disassembly: Press the button ② on the outer sides of the front armrest to remove ①.
2. Front armrest installation: Align the front armrest with the holes on both sides of the seat and insert it until you hear a 'click'. The installation is complete.



Instructions

To tighten the waist belts and shoulder straps:

1. Buckle: Attach 1 and 2 into the 4 and 5 position, then insert 4 and 5 into buckle 3 to complete.
2. Open: Press the middle button of the safety buckle to remove.
3. Safety webbing adjustment: Pull one end of the safety webbing, then slide the button up and down to adjust the length of the strap.

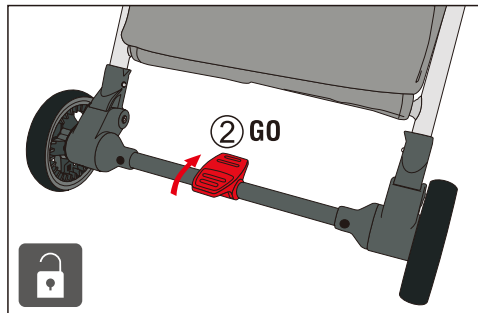
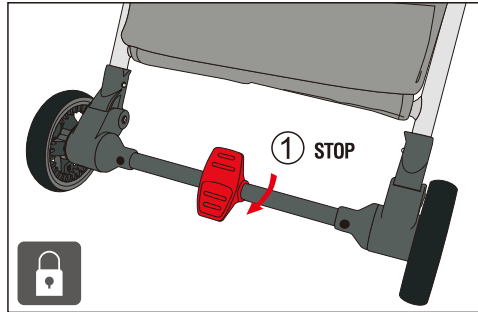


Instructions

How to use the rear brake

As shown in the figure, step on the brake pedal - the pushchair will not move. Lift the pedal to move again.

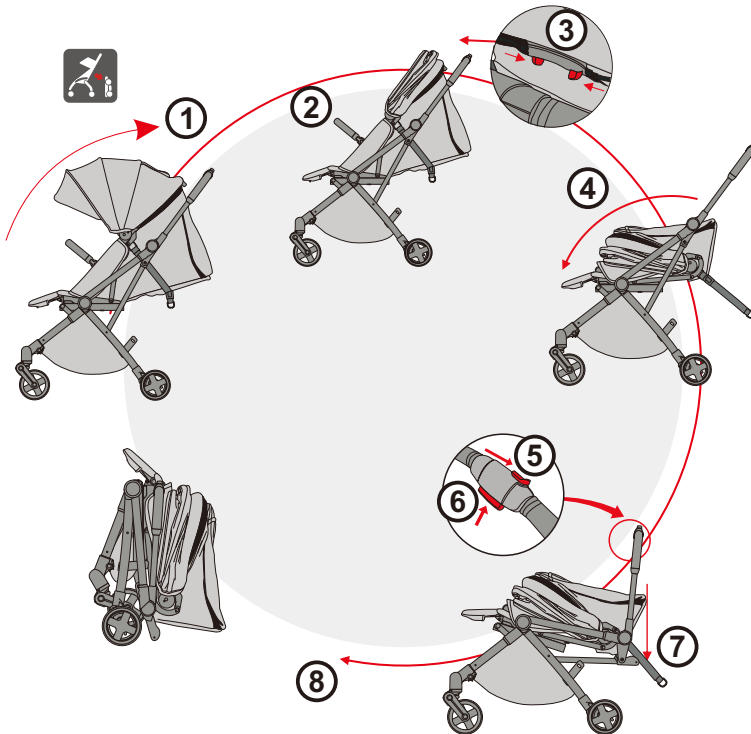
Note: You must use the brake when the pushchair is stationary.



Instructions

Trolley folding method



1. Fold the canopy ① .
2. Fold the front armrest ② , then pinch the seat folding button ③ .
3. Fold the seat forward as shown in the figure ④ .
4. As shown in the figure, use your thumb to push the second lock ⑤ in the direction of the arrow, then press the folding button ⑥ and push the handle down ⑦ .
5. As shown in the picture, when the retracting hook is automatically buckled, it indicates that the pushchair is folded ⑧ .





WARNING

- Please read this manual carefully before use and keep for future reference. Failure to follow instructions can cause injury.
- Children must be under adult supervision when in the pushchair.
- A seatbelt must always be worn.
- Suitable for ages 0-36 months. Not for children over the age of three. Maximum load is 15kg (33 lbs).
- Ensure all locking devices are working and locked before using. Placing anything on the handle can cause the pushchair to tilt.
- Do not use the front armrest to lift the pushchair - it could fall off and cause an injury.
- Do not leave the pushchair on a slope.
- Maximum load of the basket is 2kg (4.4 lbs).
- When taking out or putting in a child, ensure the brakes are on.
- Do not fold the pushchair whilst a child is inside.
- Do not disassemble or adjust any parts of the pushchair while a child is inside.
- Keep plastic bags away from the side of the pushchair to prevent suffocation.
- The use of accessories not provided by the manufacturer is prohibited.
- When the angle between the backrest and the seat cushion is adjusted to less than 150 degrees, it is not suitable for children under six months.

 **WARNING**  Never leave children unattended.

 **WARNING**  To avoid falling out the pushchair, always wear a seatbelt.

 **WARNING**  Placing items on the pushchair can cause it to tip over.

CARE AND MAINTENANCE

- Please use non-toxic and non-abrasive cleaners to clean this pushchair. Mix water and a small amount of mild non-toxic detergent into a solution. Wipe the frame with a damp cloth. Never use abrasive cleaners or solutions.
- Do not store this pushchair in humid or high temperature areas - this could cause rust or damages to parts. Keep the pushchair in a ventilated and dust-free area.
- Use a rain cover during wet weather. Dry the pushchair before folding and storing.
- Regularly check for loose screws and damaged parts. If damages are found, stop using immediately.
- When disassembling and assembling, please follow all instructions carefully to avoid damage.

If you have any questions, please contact our customer care center.
Our contact details are below:

 001-877-644-9366

 customerservice@aosom.com

Imported by Aosom LLC
27150 SW Kinsman Rd Wilsonville, OR 97070 USA
MADE IN CHINA

