



IN220901135V01_US

370-249V00

QLS-996

EN



Children Ride-on Sliding Car

Installation and Operation Instructions
Simulation car model
Slide on both feet
Built-in music, external device music playback
Volume adjustment function
Power display



Maximum weight: 25KG

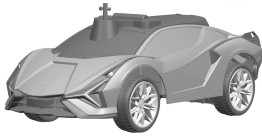
Lamborghini Sian FKP 37

Ride-on

IMPORTANT, RETAIN FOR FUTURE REFERENCE: READ CAREFULLY

ASSEMBLY INSTRUCTION

A x 1



Body

B x 1



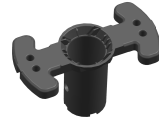
Steering wheel

C x 1



Backrest

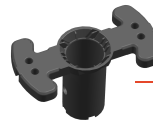
D x 1

Steering wheel
bottom

Body



Backrest

Steering wheel
bottom

Steering wheel

Product Specifications

Suitable age: 18-60months

Maximum weight: 25kg

Car Size: 71*30*43cm

Battery Operating Specifications:

Never mix new and old batteries, or different kinds of batteries.

Never mistake positive and negative electrode of battery, or short circuit will happen.

Non-rechargeable batteries are not to be recharged.

Install batteries in a right polarity.

Only adults can recharge or change batteries.

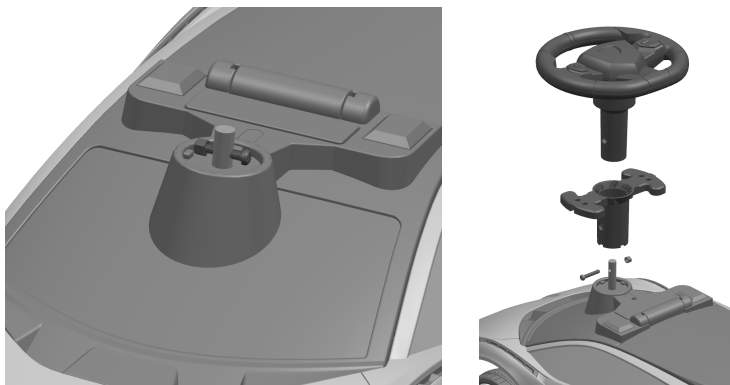
Never make power port's short circuit happen.

Recharge the battery only when it is taken out of the toy car.

Take exhausted battery out of the toy car and keep it out of children's reach.

Install the steering wheel

First remove the screw and nut from the steering rod, attach the steering wheel and Steering wheel bottom to the steering rod and secure it with the screw and nut.



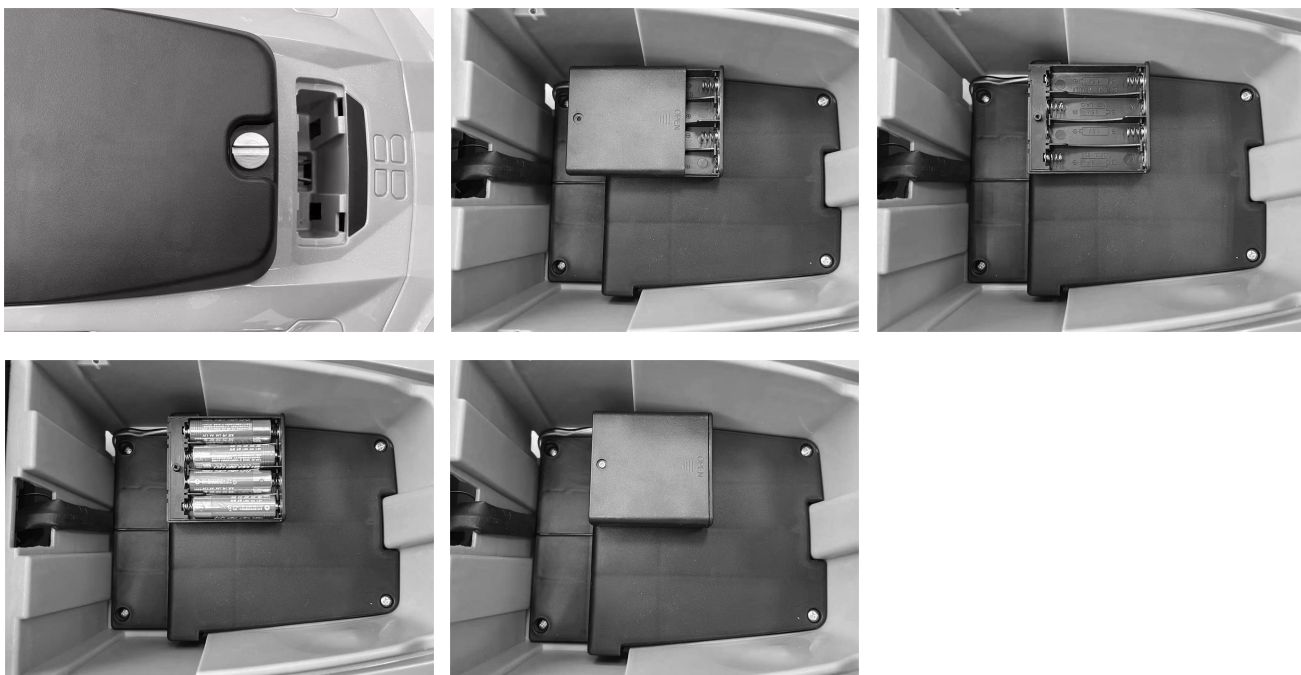
Install the backrest

Clamp the backrest down against the bayonet at the rear of the car.

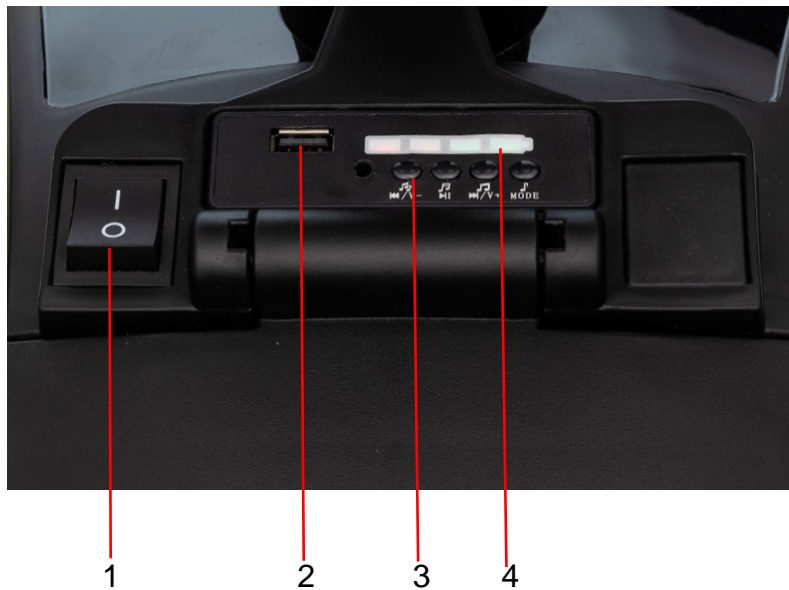


Install the batteries

Open the seat, open the cover of battery box, install 4 AA batteries(1.5V, not provided), pay attention to the positive and negative terminals of the batteries, cover the battery box, cover the seat and lock it.



Function



Function indication

1. Power switch
2. USB
3. Music button
4. Power display

Maintenance and Service

After a period of use, parents should lubricate iron castings with lube, otherwise those castings will get rusted; they should keep the product out of fire and lay it flat in dark places; they should put the product inside the house or cover it with one water-proof cloth in wet weather.

Parents should keep the product out of such hot objects as stove and heater, otherwise its plastic parts may be thawed.

Parents should clean car surface with dry cloth, or clean plastic parts with non-waxy furniture polish; they shouldn't clean plastic parts with chemical solutions or clean the car with water; children cannot drive the car in wet or rainy weather, otherwise the car's circuit system will be damaged.

When not using or laying the product, parents should cut off car power, take out the battery.

Parents shouldn't change product structure and circuit system, and should have the product checked and fixed by professionals or under the guidance of professionals.



WARNING

Warning: The toy is to be assembled by an adult. In unassembled state contain potentially hazardous sharp points, sharp edges and small part, so please keep out of baby's reach.

Warning: Not to be used in traffic.

Warning: Only adults can install parts and adjust the car, and keep moving parts out of children 's reach.Children can use the product only in the company of adults, and the adult cannot leave during the process.

Warning: Never let Children stand or play onto the pedal or on the car.

Warning: Keep such package materials as plastic bags out of children, or they will suffocate or kill children.

Warning: Never use parts provided by non-manufacturers. The number of connected power by the product can never be over the recommended number.

Warning: Toys used by children outside of private places may be potentially dangerous.

Notice of use

Never use the product in such dangerous zones as street, road, slope or drain.

Never change the circuit and additional electric devices.

Never pour water or other liquid into the car, keep the product out of the fire, otherwise the car will be damaged.



Only one child can use the product, and its weight cannot exceed 25KGS.

Turn off the power when not in use and remove batteries when not using it for a long time.

The product must be assembled by the adult!

Before assembling, screws and pins are dangerous sharp points.

Our contact details are below:

Country	 Phone	 Email
US	001-877-644-9366	customerservice@aosom.com

The "Lamborghini" and "Lamborghini Bull" and "Shield" trademarks, copyrights, designs and models are used under license from Automobili Lamborghini S.p.A, Italy.

Licensed manufacturer: Pinghu Qileshi Baby Carrier Co., Ltd

