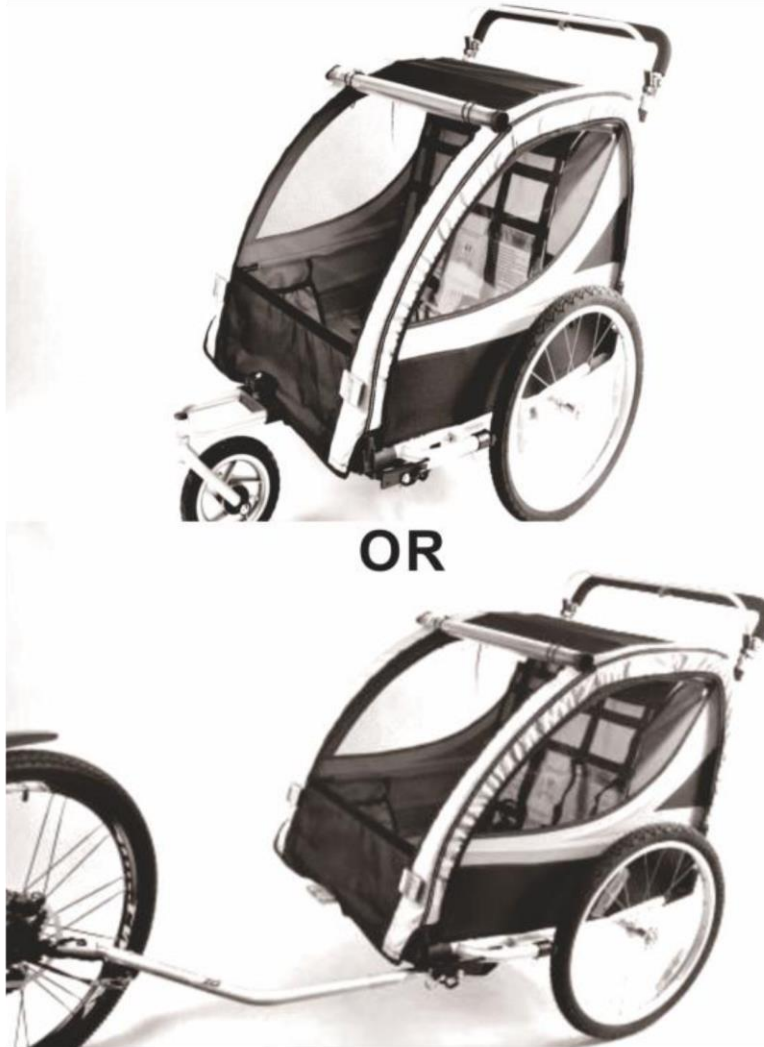




Aosom

IN220901422V01_US

440-026_440-026V01



OR

EN_IMPORTANT, RETAIN FOR FUTURE REFERENCE: READ CAREFULLY.

FR_IMPORTANT: A LIRE ATTENTIVEMENT ET À CONSERVER POUR CONSULTATION ULTÉRIEURE.

ES_IMPORTANTE, LEA Y GUARDE PARA FUTURAS REFERENCIAS.

PT_IMPORTANTE, RETER PARA REFERÊNCIA FUTURA: LEIA ATENTAMENTE.

DE_WICHTIG! SORGFÄLTIG LESEN UND FÜR SPÄTER NACHSCHLAGEN AUFBEWAHREN.

IT_IMPORTANTE! CONSERVARE IL PRESENTE MANUALE PER FUTURO RIFERIMENTO E LEGGERLO ATTENTAMENTE.

EN

Dear customer,

Thank you for purchasing this product. So that your appliance serves you well, please read all the instructions in this user's manual. If you have any questions, please contact our customer care center, Our contact details are below:

FR

Cher client,

Nous vous remercions d'avoir acheté ce produit. Afin que vous puissiez profiter pleinement de votre appareil, veuillez lire toutes les instructions de ce manuel d'utilisation. Si vous avez la moindre question, veuillez contacter notre centre d'assistance à la clientèle, Nos coordonnées sont les suivantes:

DE

Sehr geehrter Kunde,

Vielen Dank, dass Sie dieses Produkt erworben haben. Damit Ihr Gerät Ihnen gute Dienste leistet, lesen Sie bitte alle Hinweise in diesem Benutzerhandbuch. Wenn Sie Fragen haben, wenden Sie sich bitte an unser Kundendienstzentrum, Unsere Kontaktdaten stehen unten:

ES

Queridos clientes,

Gracias por comprar este producto. Para que su electrodoméstico le sirva mejor, lea todas las instrucciones de este manual del usuario. Si tiene alguna pregunta, comuníquese con nuestro Centro de Atención al Cliente, Nuestros datos de contacto son los siguientes:

PT

Caros clientes,

Obrigado por adquirir este produto. Para que o seu aparelho o sirva melhor, leia todas as instruções deste manual do utilizador. Se tiver alguma dúvida, por favor contacte o nosso Centro de Atendimento ao Cliente, Os nossos dados de contacto são os seguintes:

IT

Caro Cliente,

Grazie per aver acquistato questo prodotto. Per servirti meglio con questo apparecchio ti prego di leggere tutte le istruzioni in presente manuale utente. In caso di dubbio, si prega di contattare il nostro centro assistenza clienti, I nostri dettagli di contatto sono di seguito:

Country	 Phone	 Email
US	001-877-644-9366	customerservice@aosom.com
CA	416-792-6088	customerservice@aosom.ca
UK	0044-800-240-4004	enquiries@mhstar.co.uk
DE	0049-0(40)-88307530	service@aosom.de
FR	0033-1-84166106	aosom@mhfrance.fr
ES&PT	0034-931294512	atencioncliente@aosom.es
IT	0039-0249471447	clienti@aosom.it

STROLLER

Subject	P
Use and installation	2-4
Technical drawing	5
Assembling the frame and seat	6
(dis)assembling of the cover	7
Position of the child(ren) in the trailer	7
(dis)assembling the wheels	9
Installation of the safety flag	9
(dis)assembling the fixation arm	10
Installation of the push bar	10
(dis)assembling the connector	11
Attaching and removing jogger/stroller	11
Using the stamp brakes	12
Disassembling and storage	13
Maintenance	13

**Read this manual and check the contents of the packaging thoroughly before using the product.
Important - Save these instructions for future reference.**

USE AND INSTALLATION

Remark: Your new trailer has been developed and produced to offer you a durable and comfortable solution during your bicycle adventures.

Read this manual thoroughly and don't throw it away in case you might need it later. Not following these guidelines may result in dangerous situations for you and your child.

Failure to comply with the manufacturer's instructions can lead to serious injury or death of the passenger/rider.

IMPORTANT

THE DRIVER AND PASSANGER ARE REQUIRED TO WEAR AN APPROVED BICYCLE HELMET WHILE USING THE TRAILER!

General characteristics of your trailer

- Quick and simple (dis)assembly and storage.
- Fits two children side by side.
- 5-point safety harness with quick release.
- Adjustable hood with retractable window.
- Easily install the wheels.

A recommendation to the user that the bicycle to which the trailer will be attached undergo a safety check by a qualified bicycle mechanic before attaching the trailer to it!

WARNING :

- **This trailer is not suitable for children younger than 18 months old** Never transport more than two children with the trailer.
- Children need to be able to sit up straight for a long time and able to wear a helmet before using the trailer.

Maximum weight for passengers: 2*18/36kg.

Maximum loading weight for the basket is 2.5kgs.

Maximum total weight: 60kg (including the trailer) .

Do not use with children who exceed the weight limitations !

Each child should be no taller than 110CM and weigh no more than 18KG.

That the carriage or stroller will become unstable if the manufacturer's recommended load is exceeded;

That the carriage or stroller will become unstable if a parcel bag or parcel rack is used when there is no provision for one.

It is forbidden to jump, wobble or play in the trailer.

- Make sure the children are not exposed to high temperatures while seated in the trailer.
- Do not use the trailer while high winds or heavy rain.
- This trailer is not suitable for transporting animals.
- Use bicycles with 22"-26" wheels capable of pulling a 60 kg trailer. Contact your manual or bicycle retailer for more information.
- Never attach the trailer to motorised vehicles!
- To prevent injuries, keep children at a safe distance while (dis)assembling the trailer.
- This trailer is not a toy!

WARNING: That the child is never to be left in the carriage or stroller unattended;

WARNING: That the child restraint system that is supplied with the carriage or stroller is to be used;

WARNING: That if a parcel bag other than one recommended by the manufacturer is used, the carriage or stroller may become unstable.

Do not install inside the trailer a car seat or any other seating device not approved by the manufacturer.

Do not allow any of the child's body, clothing, shoe laces, or toys to come in contact with moving parts.

Red reflector(s) shall be visible on the rear of the trailer.

Safety warnings before use

- Always wear adapted clothing when using the trailer in very hot/cold periods.
- Make sure the fixation arms is properly attached.
- Make sure the safety harness is closed correctly.
- **WARNING: Make sure all fixations are thoroughly checked before using the trailer.**

Guidelines

- Attach the belts and make sure the safety harness is sealed correctly.
- Check whether all bike and trailer parts are functioning properly before each ride.
- Passengers and drivers should always wear a helmet.
- Check your tire pressure before each ride.
- Adapt your speed when the trailer is attached.
- With the trailer attached your stopping distance is bigger and braking will take longer. To avoid accidents start braking sooner and slow down before turns.

- Don't use accessories not approved by the manufacturer.
- Do not use accessories not approved by the manufacturer.
- Only spare parts supplied or recommended by the manufacturer / distributor must be used.

ATTENTION

Any additional load placed on the steering and / or push and / or seat back and / or sides of the product whether stroller mode or trailer affects the stability of the product.

APPLICABLE STANDARDS : Meets:ASTM:F833 & ASTM F1975-15

SAFETY INFORMATION

Do not modify any parts of the trailer and do not use it if any parts are missing, modified or damaged. Contact your retailer for replacement parts.

SAFETYWARNINGS DURING USE

- Check the trailer before and after each ride.
- Take good care of the trailer.
- Make sure the wheels are properly installed as mentioned in the chapter below. Make sure the tire pressure is correct (see side of the tires) before each use. Incorrect tire pressure might result in accidents.
- Attach the arms to the frame of the bike. The connector should be under pressure, the safety belt underneath the rear base and the hook connected to ring "D" The driver should be at least 16 years old and in good shape.
- Make sure your bike is in good condition and your brakes are working properly. We advise you to assemble a rear view mirror to your bike. Always turn on your head and taillights.
- Maximum load is 60 kg (Trailer+ passengers+ loading).
- **IMPORTANT: Make sure the children don't move around in the trailer. Any movements may cause the trailer to flip over.Bar of the trailer shall carry no extra weight.**
- Do not place any other children's seats in the trailer. Using other seats cause the trailers warranty to expire and may cause injuries or damage to the passengers and the trailer.
- Attaching the trailer alters the feel of the bike. Especially balance and brake power are influenced.
- In case of an emergency, flat tire or other problems it is advised to push the trailer to the side of the road before repairing it.

SAFETYWARNINGS FOR THE RIDER

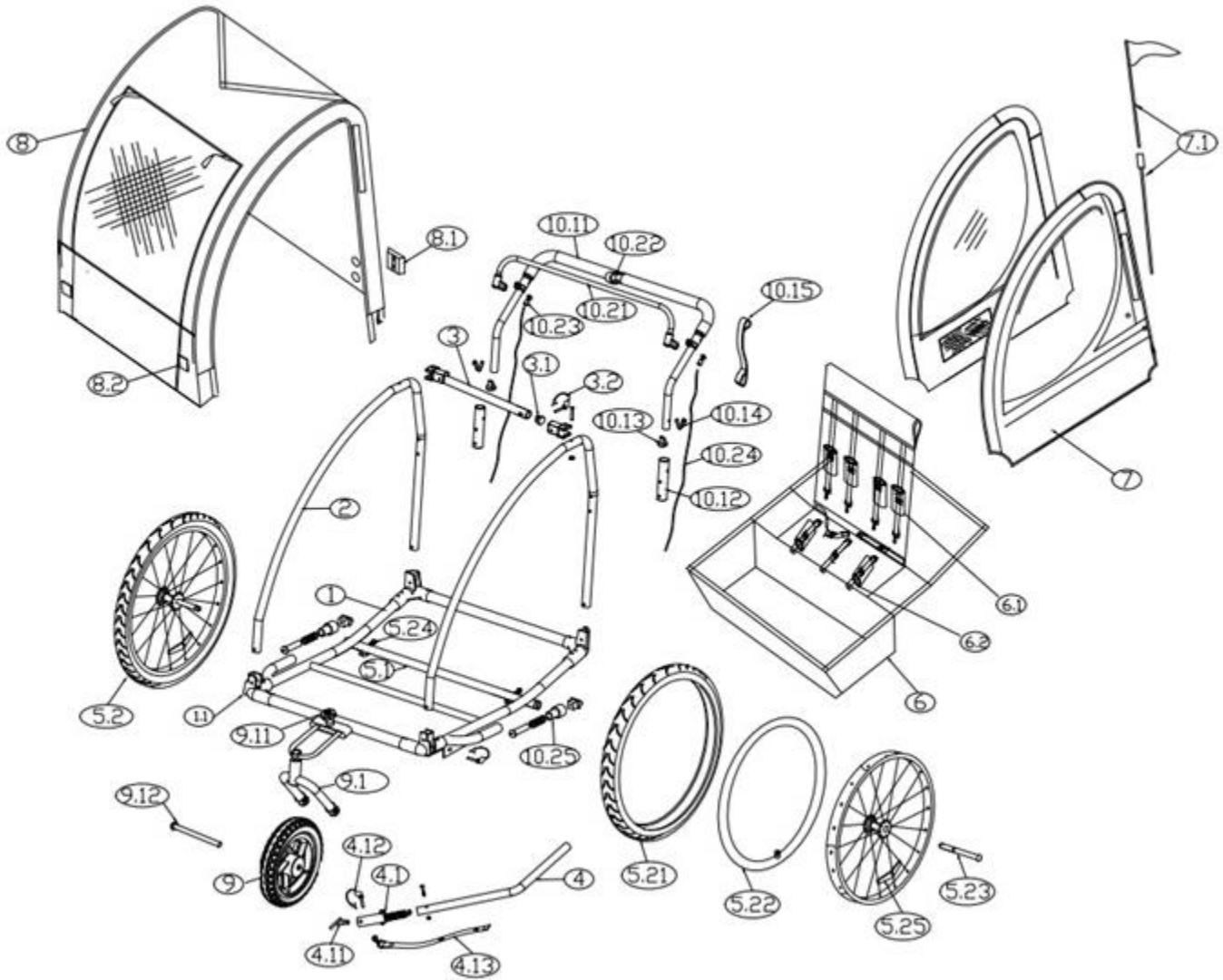
- Avoid dangerous and busy intersections and streets. If available, always ride in the bicycle lane.
- Avoid riding after sunset; otherwise make sure to use appropriate clothing and lighting. Do not transport children at night.
- Avoid sharp turns since these may cause the trailer to flip over.
- Avoid high speeds and dangerous descends.
- Avoid going faster than 16 km/h, this may affect the stability of the bike and trailer.
- Avoid potholes, mud and puddles.
- Do not use the trailer while high winds or heavy rain.

SAFETYWARNINGS FOR THE PASSENGERS

Make sure the children remain seated and the safety harness is properly closed. When the child is seated its head should not be higher than the horizontal beam. Make sure you securely tighten the belts and straps. Check the manual for more information.

Make sure the children cannot touch the wheels and the road, that they remain seated. If they do not remain seated it is possible that the trailer flips over with severe injuries as a consequence.

Technical drawing



List of components

NO	DESCRIPTION	QT'Y	NO	DESCRIPTION	QT'Y
1	Base Frame	1	7	Side Panel Fabric	2
1.1	Frame Joint	4	7.1	Flag	1
2	Side Frame	2	8	Top Cover Fabric	1
3	Cross Bar	1	8.1	Rear Red Reflector	2
3.1	Cross Bar Plug	1	8.2	Front White Reflector	2
3.2	Crossbar Safety Pin	1	9	Front Wheel Kit	1
4	Hitch Arm Kit	1	9.1	Fork Ass'y	1
4.1	Hitch Connector Ass'y	1	9.11	Wheel Bracket Knob	1
4.11	Hitch Connector	1	9.12	Front wheel axle	1
4.12	Hitch Connector Pin	1	*10.	Handle/Brake Kit	1
4.13	Safety Strap	1	*10.1	Push Bar Ass'y	1
5	Rear Wheel Kit	1	*10.11	Push Bar	1
5.1	Wheel Axle	1	*10.12	Push Bar Bracket	2
5.2	Rear Wheel Ass'y	2	*10.13	Push Bar Plug	2
5.21	Tire 20"	2	*10.14	Push BarSpring Button	2
5.22	Tube 20"	2	*10.15	Wrist Tether Strap	1
5.23	Wheel Shaft	2	*10.2	Stamp Brake Ass'y	2
5.24	Wheel Lock Button	2	*10.21	Brake Bar	1
5.25	Spoke Reflector	4	*10.22	Brake Clip	1
6	Deck/Seat Fabric	1	*10.23	Cable Tension Nut	2
6.1	Shoulder strap	4	*10.24	Brake Cable	2
6.2	Crotch strap	3	*10.25	Brake Stopper	2

ASSEMBLY AND DISASSEMBLY OF THE FRAME & SEAT

Remove trailer and all components from carton and sort all contents. Unfold side panels of trailer to the upright position.



Swing the crossbar upward into position across the top between the side panels and route it through the loops at the top of seat. Insert the crossbar into the upper sleeve and lock with the safety pin.

To use the pin and spring clip fasteners, insert the pin at attachment point until it pushes through the opposite hole. Rotate the spring clip up and over until it snaps into place over the pin head. To unlock, reverse order.



To disassemble follow the instructions in the reverse order.

CAUTION!

The vehicle is not suitable for children 12 months or younger.

Ensure that the safety pin is secured with the spring clip.

Ensure that all the locking devices are engaged before use.

WARNINGS!

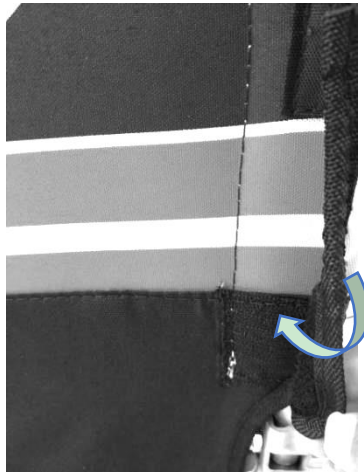
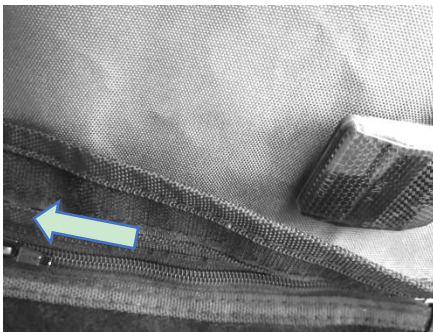
Immediately discard all plastic bags and plastic wrapping materials. To prevent injury, please use extreme care when folding and unfolding the trailer/jogger/stroller.

ATTACHING AND REMOVING THE TOP COVER

Position the top cover over top of the trailer so that the roll-up window with bug mesh screen is to the front of trailer. Feed the cover over the push-bar post holes so they protrude through. Fasten the rear of cover with Zipper/Velcro strap and the bottom corners of the cover with Velcro and stretch it until it is fully covering the trailer.

Reverse the instructions to remove the top cover.

The top cover is designed to keep passengers and cargo dry and warm in inclement weather and protects from flying debris. The rain PVC cover can be rolled up to allow for added ventilation in hot weather or rolled down to allow for added warm protection in the cold weather. Velcro closures keep the rain cover out of the way when rolled up.



CAUTION!

It is strongly recommended that children's eyes are protected from flying insects and airborne particles when using trailer. For protection, ensure that the insect screen or the clear window is closed when using.

WARNINGS!

Passengers can become hot inside fully closed trailer during very hot weather or when parked. Please make sure to open roll up top cover vents to prevent overheating.

Position of the child(ren) in the trailer

When you place the children in the seat or remove the children from the seat, always check that the trailer is securely connected with the bike and the bike is properly parked. Always put on all brakes when loading or unloading.

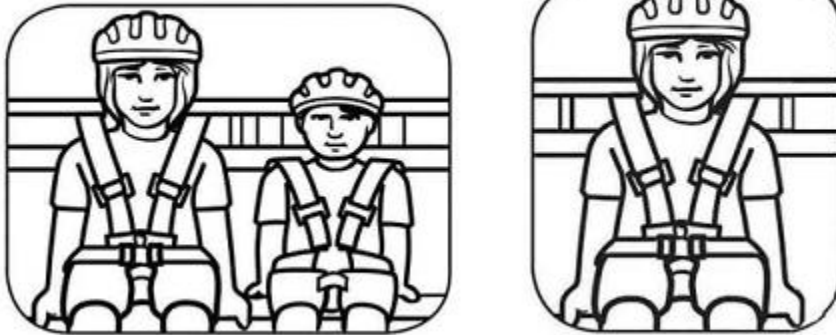
Open the front of top cover and place the children in the proper position and close the top cover. Make sure to use the seat belts and shoulder straps and wear helmets.

The harness system is designed to keep your passengers immobilized and secure during transport. The harness is designed to accommodate one or two children.

- Disconnect shoulder strap clips from crotch strap D-ring.
- Place child in seat. If carrying a single passenger, place child in the middle of the trailer seat.

- Put one strap over each shoulder and connect to the D-ring of the crotch strap.
- Adjust shoulder crotch straps to be snug and secure.
- Fasten lap belt and tighten securely.

Never ride without securing passengers in the Five Point Harness. Unrestrained passengers can affect bike handling; and they may be more likely to be injured in the event of an accident.



When one child is riding, seat him/her in the center. Do not carry extra children or belongings on the trailer.

Open the rear of top cover and fix the parcels in the storage compartment and close the top cover.

This section applies to two-occupant trailers that provide a center seating position—When used with only one occupant, the occupant should be seated in a center seating position.

CAUTION!

There should be a minimum distance of 2” (50mm) between the top of the child’s head (without a helmet on) and the roof of cabin. If the child’s head protrudes above the upper crossbeam when seated, they are too tall to ride safely in the trailer. Each child must wear an ANSI or CPSC approved bicycle helmet when riding in this product.

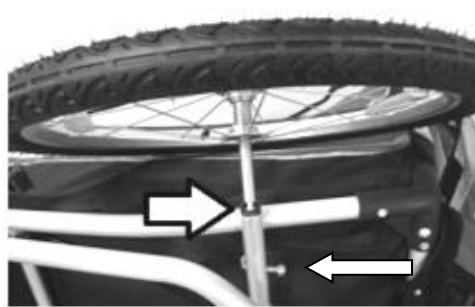
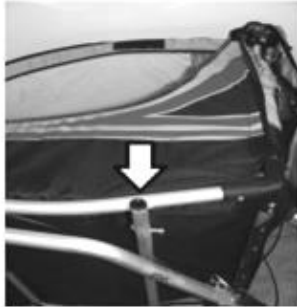
⚠ WARNINGS!

Avoid serious injury from falling or sliding out. Children should always wear the harness and shoulder straps. Always adjust the harness to a snug and secure position for the child to prevent slipping into the leg openings and risking strangulation. Always check the child’s position and safety strap security. Never operate without securing passengers in the 5-point harness. Unrestrained passengers can affect bike handling; and they may be more likely to be injured in the event of an accident.

(DIS)ASSEMBLING THE WHEELS

Lift the trailer and place the axle in the appropriated location. The safety hook will make sure the wheel remains securely attached. When both wheels are attached we advise you to pull both in order to make sure they don't move.

Remark: Regularly check the tire pressure!



To remove the wheels lift the trailer and remove the safety hook.

REMARK

When the wheels are not properly attached it's possible that one or both wheels release with a crash as result.

WARNINGS!

For easy towing and safe handling, check tires often for proper inflation and wear. Check tire pressure regularly. Always maintain the tires within pressure range indicated on tire sidewall.

WARNINGS!

Never use the vehicle at night without adequate lighting and reflectors, obey all local laws for lighting and reflectors in accordance with CPSC requirements. In order to meet CPSC Safety Standards, a reflector must be in place on the rear of the trailer.

INSERTING AND REMOVING THE FLAG

Assemble the two sections of the flag pole together. Insert the flagpole into the sewn sleeve on the left rear corner of the trailer.



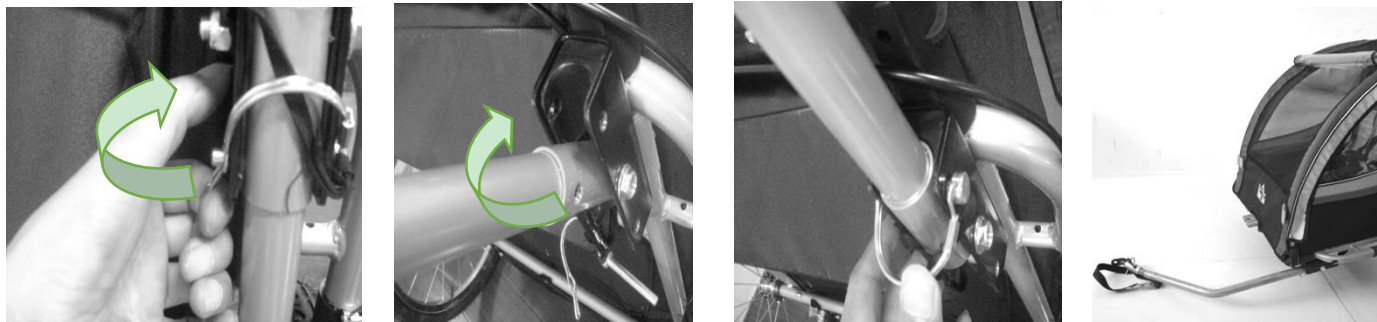
CAUTION!

Always use the safety flag to maximize your visibility to other vehicles sharing the road or path.

(dis)assembling the fixation arm

Tip the trailer back on its frame so the underside is fully visible. Remove the safety pin, rotate the hitch arm upward until fully extended. Reinsert the safety pin and lock the spring clip.

For folding and storage, reverse the process and be sure to fasten the hitch arm fully.



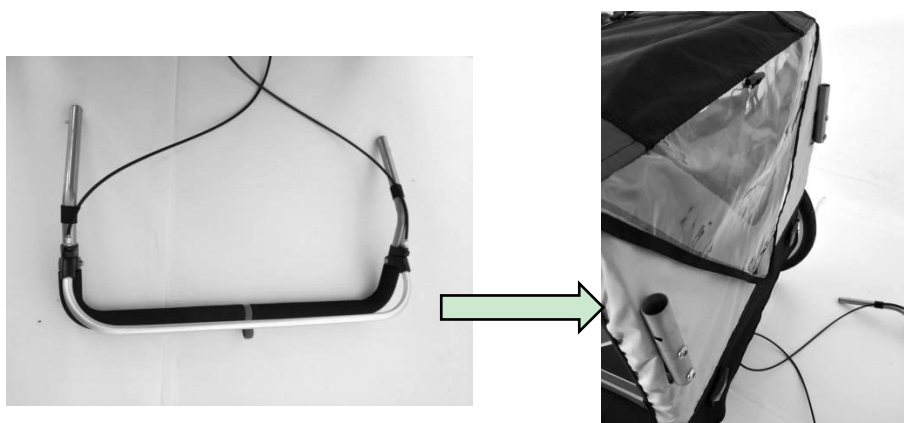
To disassemble follow the instructions in the reverse order.

CAUTION!

Do not use the trailer without proper installation of the safety pin.

Installation of the pusher bar

Take the pusher bar and engage in the slots provided for this purpose:

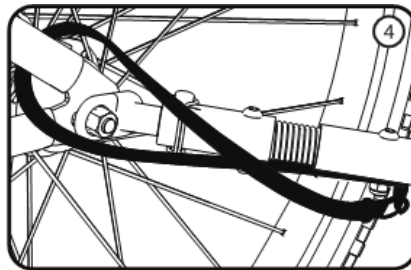
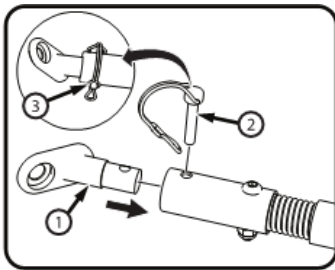


Check that the two snaps are fully engaged!



(dis)assembling the connector

Install steel connector onto bike axle. Insert safety pin and pass safety strap through chain stay pipe of bike.



CAUTION!

The height of the hitch clamp shall not exceed 15.5" (400 mm) above a road surface and the standard drawbar load shall be between 30N and 80N. The hitch arm must not bear any extra load.



WARNINGS!

Ensure the safety pin is secured with the spring clip. Please ensure your bike is completely compatible with the trailer. The safety strap must be in place before use.

If the hitch arm interferes with your bike or other bike attachments, or if it does not tighten securely, do not use. Contact your bike dealer for help with proper installation.

ATTACHING AND REMOVING THE STROLLER KIT

The stroller conversion kit consists of a push bar and front wheel assembly that attach on the trailer to convert it for walking use.

Install the push bar by inserting ends into frame and pushing down until locking devices snap into place. Insert the front wheel assembly into the bracket and firmly tighten the knob.

To convert back to use as a trailer, loosen wheel bracket knob and remove the wheel.

AS STROLLER:



To disassemble follow the instructions in the reverse order.

WARNINGS!

The trailer/jogger/stroller is not suitable for running or skating. Any load attached to push bar affects the stability of the vehicle. Before using as a trailer, the wheel assembly should be removed.

USING THE STAMP BRAKES

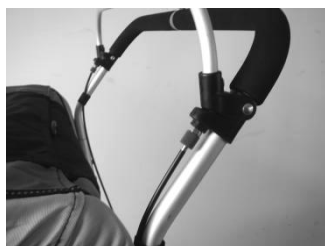
The jogger/stroller is equipped with a hand brake to slow down the speed and to park the vehicle.

The push bar is equipped with a locking clip for enhanced parking performance. Pull back and engage the stamp brakes and clip the hook onto brake bar to lock the stamp brakes in place.

Gently push on the vehicle to ensure the parking devices are engaged before loading or unloading passenger or cargo.

The brake cables may have weak tension and the brake can not properly work. It should need a fine-tuning on the tension nuts. The cable tension can be tuned via the red tension nuts. Adjust the opposite tension nuts by turning down to proper position and then turning up the upper nut to fix the red nut. When completed, test the stamp brakes to ensure it work properly before using.

Brake clip-----



Brake adjusting screw

WARNINGS!

The parking performance will be affected by low tire pressure and weak cable tension. Always check the tire pressure regularly and inflate to the range indicated on the tire sidewall for proper parking performance. Always check and adjust the tension of brake cables for proper braking performance.

All parking devices shall be engaged during loading and unloading of passengers or belongings. Be sure that all parking devices work properly.

Always use the wrist strap when pushing the vehicle to prevent it from rolling away from you. Be sure that the parking devices are released before walking or pulling. It may be dangerous to leave the children unattended in or around the vehicle.

DISASSEMBLY , FOLDING AND STORAGE

For partial or complete disassembly, folding and storage, reverse the above-mentioned process and be sure to insert the safety pins fully and lock it with the spring clips. Inspect the trailer and its parts before and after each use and storage. Check the working conditions of both trailer and bike before each use.

Store trailer in a dry area under ambient conditions and always make sure trailer is dry before storing.

CAUTION!

To prevent color fading and eventual weakening of the fabrics or components, store the trailer out of direct sunlight.

MAINTENANCE

From time to time, check your trailer for loose hardware, worn parts, torn material or stitching. Repair or replace parts as needed. Over or under inflation of tires may cause handling issues for the trailer. Replace tires only with street tread and not with BMX or knobby tread.

We suggest to periodically clean all parts wipe dry and then let air dry, especially if you are exposed to salt water, salt spray, beach sand etc.

CAUTION!

Do not make any modifications to the trailer/jogger/stroller. Be sure that the trailer and bike are in good working conditions. A bike dealer can help you with inspection and maintenance.

WARNINGS!

Do not use cleaning solvents. Clean only with mild soap and water.

SERVICE AND REPAIR

Service and repair can be performed by any bike shop.

Imported by :Aosom LLC Manufacture:

ADD: 27150 SW Kinsman Rd Wilsonville, OR 97070 USA