



IN221101118V01_US

C20-040_C20-040V01



12" HYDRAULIC VEHICLE POSITIONING JACK



IMPORTANT, RETAIN FOR FUTURE REFERENCE: READ CAREFULLY

ASSEMBLY INSTRUCTION

Dear customer,

Thank you for purchasing this product. So that your appliance serves you well, please read all the instructions in this user's manual. If you have any questions, please contact our customer care center.

Our contact details are below:

Country	 Phone	 Email
US	001-877-644-9366	customerservice@aosom.com

GENERAL SAFETY RULES



WARNING: Read and understand all instructions. Failure to follow all instructions listed below may result in electric shock, fire and/or serious injury.



WARNING: The warnings, cautions, and instructions discussed in this instruction manual cannot cover all possible conditions or situations that could occur. It must be understood by the operator that common sense and caution are factors which cannot be built into this product but must be supplied by the operator.

SAVE THESE INSTRUCTIONS

WORK AREA

- Keep work area clean, free of clutter and well lit. Cluttered and dark work areas can cause accidents.
- Keep children and bystanders away while operating this jack. Distractions can cause you to lose control, visitors should remain at a safe distance from the work area.
- Be aware of all power lines, electrical circuits, water pipes and other mechanical hazards in your work area, particularly those hazards below the work surface hidden from the operator's view that may be unintentionally contacted and may cause personal harm or property damage.
- Be alert of your surroundings. Using jacks in confined work areas may put you dangerously close to cutting tools and rotating parts.

PERSONAL SAFETY

- Stay alert, watch what you are doing and use common sense when operating this jack. Do not use a jack while you are tired or under the influence of drugs, alcohol, or medication. A moment of inattention while operating tools may result in serious personal injury.
- Dress appropriately. Do not wear loose clothing, dangling objects, or jewellery. Keep your hair, clothing, and gloves away from moving parts. Loose clothes, jewellery or long hair can be caught in moving parts.
- Use safety apparel and equipment. Use safety goggles or safety glasses with side shields which comply with current national standards, or when needed, a face shield. This applies to all persons in the work area. Also use non-skid safety shoes, hardhat, gloves, dust collection systems, and hearing protection when appropriate.
- Do not overreach. Always keep proper footing and balance.

TOOL USE AND CARE

- **Read all the instructions and warnings first before attempting to operate this jack.**
- **DO NOT** operate jack on inclined surfaces. Jack must be used on a level surface only. Unanticipated motion can occur as soon as jack lifts the tyre from surface.
- **DO NOT** overload jack beyond the load rating (1500 lbs. per unit)
- **DO NOT** start the vehicle's engine, or drive a vehicle while the jack is in use. Jacks are designed for hand maneuvering of vehicles only.
- **DO NOT** use jack to lift tyres wider than 12 inches.
- **DO NOT** attempt to push jack over obstacles. Jack is designed to be used on level and smooth surfaces only.
- **After lifting, be sure to always lock the pin in place before operating.** Pull the pin out after finishing work and then release the valve.
- **Do not force the tool.** Tools do a better and safer job when used in the manner for which they are designed. Plan your work, and use the correct tool for the job.
- **Store idle tools.** When tools are not in use, store them in a dry, secure place out of the reach of children. Inspect tools for good working condition prior to storage and before re-use.
- **Use only accessories that are recommended** by the manufacturer for your model. Accessories that may be suitable for one tool may create a risk of injury when used on another tool.
- **Keep guards in place** and in working order.
- **Never leave tool** unattended.

OPERATION

1. Place jack on floor and press down on the pedal to release pedal lock. Pull out the lock pin from frame.
2. Before operation, open the release valve by turning the hand-wheel counterclockwise. Expand the jack with the hand-wheel to place the rollers around the tyre; position the jack so both rollers are in contact with the tyre tread. To obtain the best control of the jack while expanding the rollers around the tyre, place your left hand on top of the left side axle and place your right hand at the center of the pedal. Close the release valve by turning the hand-wheel clockwise to a snug-tight position; jack may now be used.
3. Install jack so that the unit is parallel to the sidewall of the tyre to be lifted. Leave approximately 3/4" of clearance between tyre and jack. **This is very important.** If unit is misaligned, the tyre may hit the axle of the jack and not the rollers; this may damage the jack and void the warranty.
4. To lift tyre, flip the directional lever up, then place foot on pedal, depressing the pedal with smooth, even strokes. Cycle pedal until tyre is lifted from surface one inch or less. After lifting, the lower the tyre is to the ground the more stable jack will be. **After lifting, be sure to always lock the pin in place before operation.** If using more than one jack, repeat

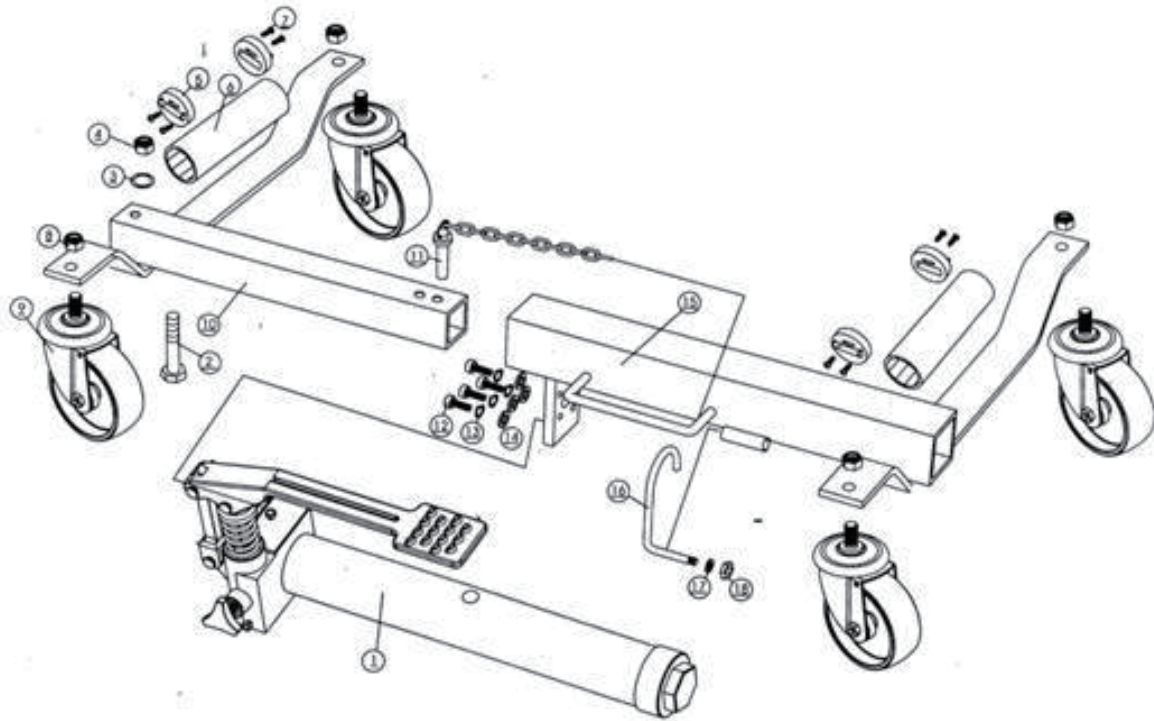
process on the other tyres and maneuver the vehicles as required.

5. To release jack, pull the pin out from the frame and open the valve by turning the hand-wheel counterclockwise slowly. Jack may be removed when rollers disengage from the tyre.

MAINTENANCE

- **Maintain your jack** is recommended that the general condition of any jack be examined before it is used. Keep your tools in good repair by adopting a program of conscientious repair and maintenance. Have necessary repairs made by qualified service personnel.
- **Cleaning.** Use only soap and a damp cloth to clean your jack. Many household cleaners are harmful to plastics and other insulation.

12"VEHICLE POSITIONING JACK PARTS LIST



Part#	Description	Qty.	Part#	Description	Qty.
1	Ram Assembly	1	10	Left Frame	1
2	Bolt M16*115	1	11	Lock Pin with Chain	1
3	Flat Washer	1	12	Screw M6*20	4
4	Nut M16	1	13	Lock Washer	4
5	Roller Raceway	4	14	Flat Washer	4
6	Roller	2	15	Right Frame	1
7	Raceway Lock Screw	8	16	Hook	1
8	Lock Nut M12	4	17	Washer for Hook	1
9	4" Swivel Caster	4	18	Nut for Hook	1