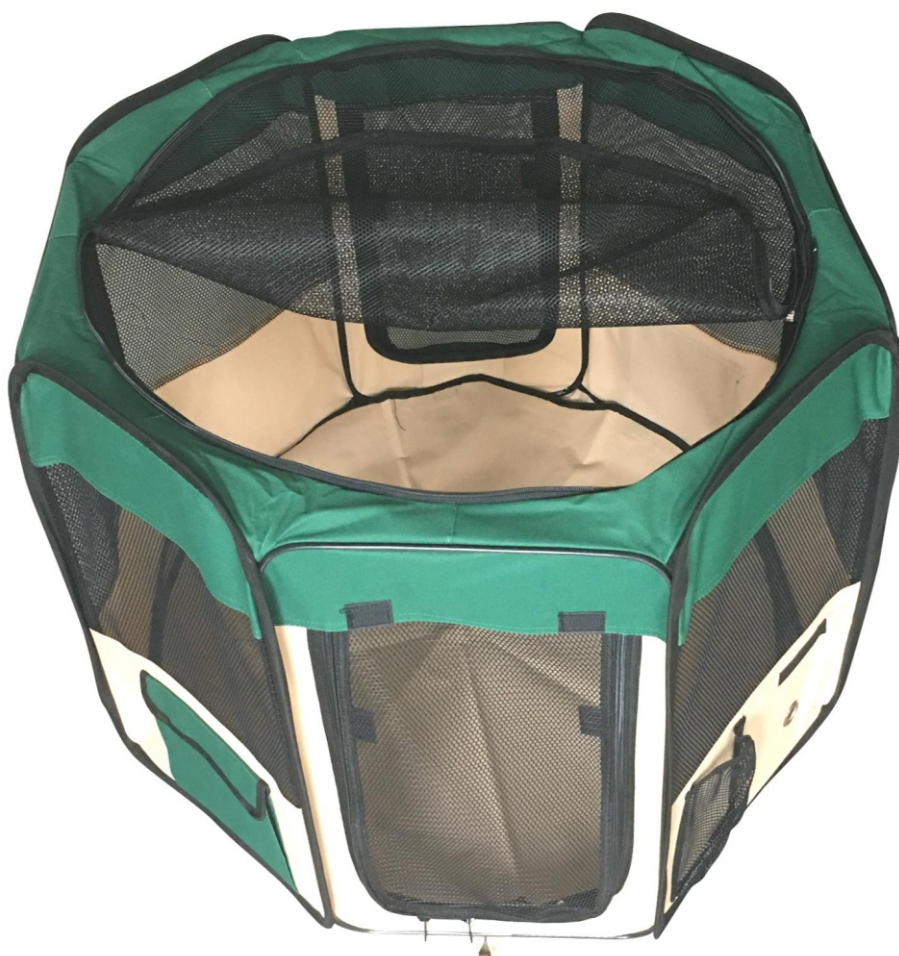


PawHüt!

IN230300055V01_GL



EN_IMPORTANT, RETAIN FOR FUTURE REFERENCE: READ CAREFULLY.

**FR_IMPORTANT: A LIRE ATTENTIVEMENT ET À CONSERVER POUR CONSULTATION
ULTÉRIEURE.**

ES_IMPORTANTE, LEA Y GUARDE PARA FUTURAS REFERENCIAS.

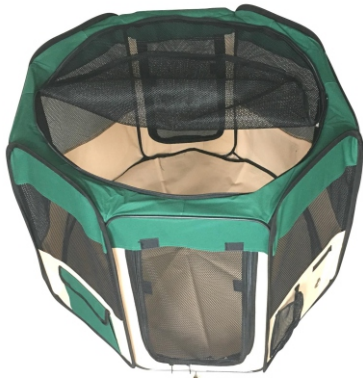
PT_IMPORTANTE, RETER PARA REFERÊNCIA FUTURA: LEIA ATENTAMENTE.

DE_WICHTIG! SORGFÄLTIG LESEN UND FÜR SPÄTER NACHSCHLAGEN AUFBEWAHREN.

**IT_IMPORTANTE! CONSERVARE IL PRESENTE MANUALE PER FUTURO RIFERIMENTO E
LEggerlo ATTENTAMENTE.**

How to Fold

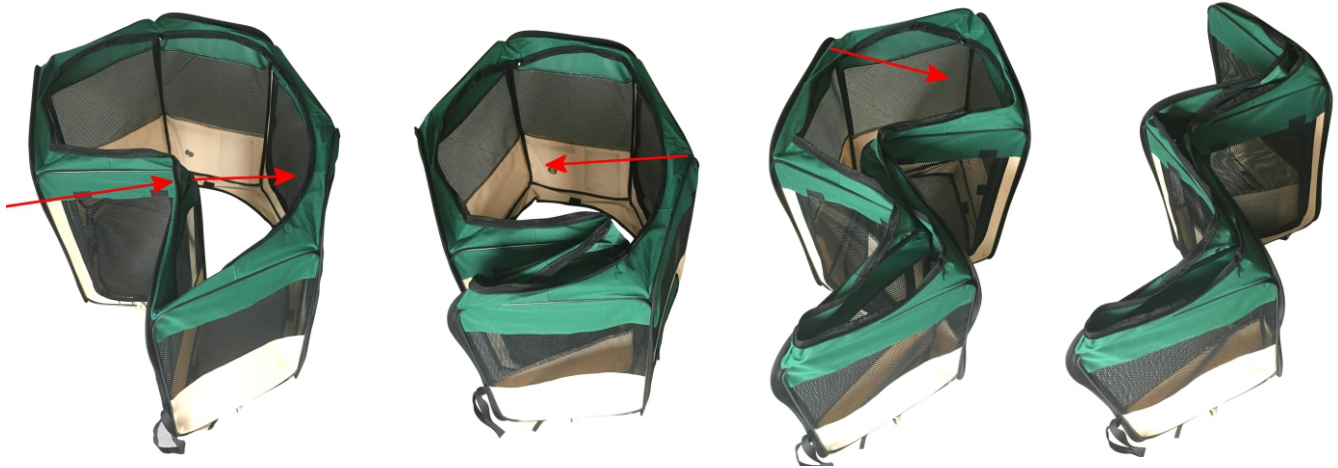
Step 1: Upzip the top and bottom



Step 2 Find the elastic band

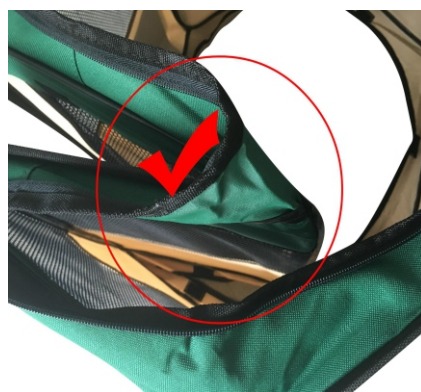


Step 3 Fold the panel which is adjacent to elastic band first, then fold the other two panels as pictures show

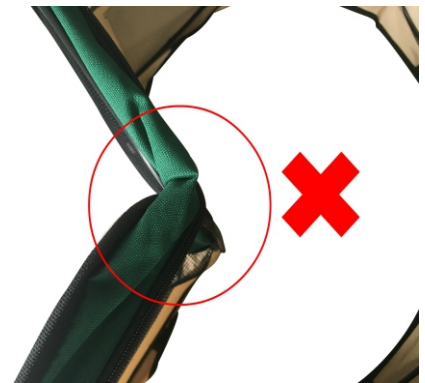


Step 4 Folding to flat and tie up with the elastic band.

Caution : When you do step 3 please arrange all the edges like picture A, not picture B, which will prevent you folding the panel smoothly, and if you fold when edges like picture B by force which may damage your pen.



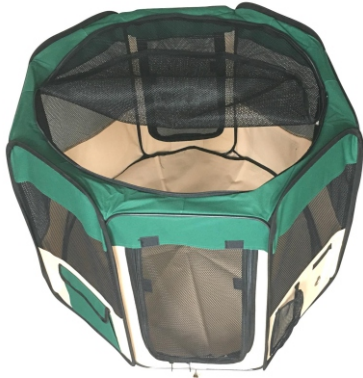
A



B

Comment plier le parc pour animaux

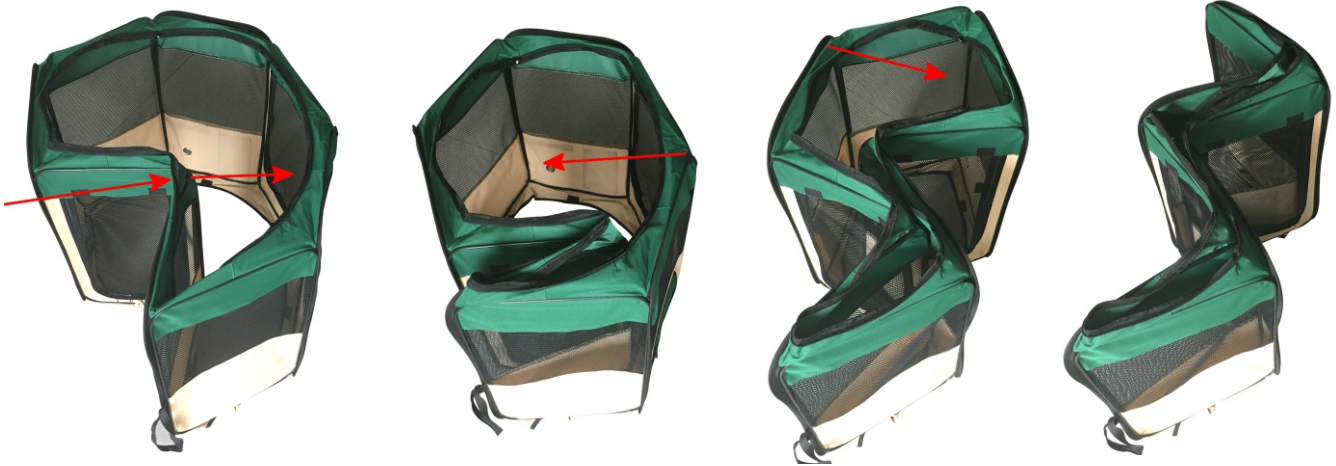
Etape 1 : Remontez la fermeture éclair du



Etape 2 : Trouvez la bande élastique haut et du bas



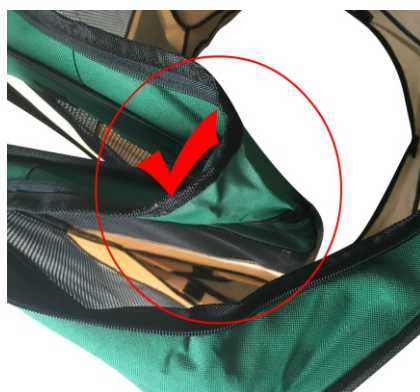
Etape 3 : Pliez le panneau qui se trouve à côté de la bande élastique, puis pliez les deux autres panneaux comme illustré ci-dessous.



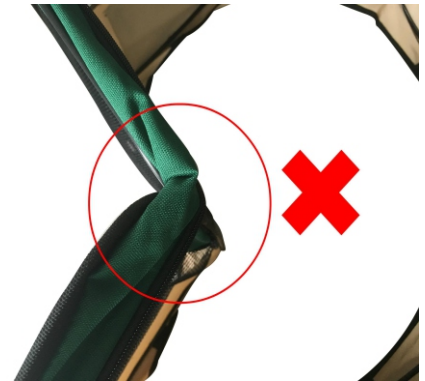
Etape 4 : Pliez à plat et attachez le parc avec la bande élastique.



Attention : Lors de l'étape 3, veuillez disposer tous les bords comme indiqué sur la figure A. Si les bords sont comme indiqué sur la figure B, le produit pourrait être endommagé.



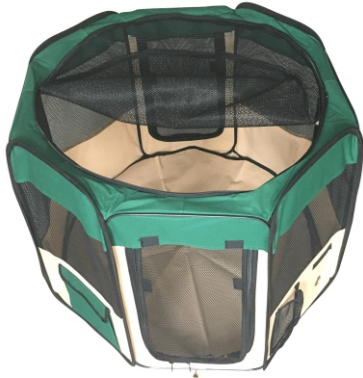
A



B

Cómo se pliega

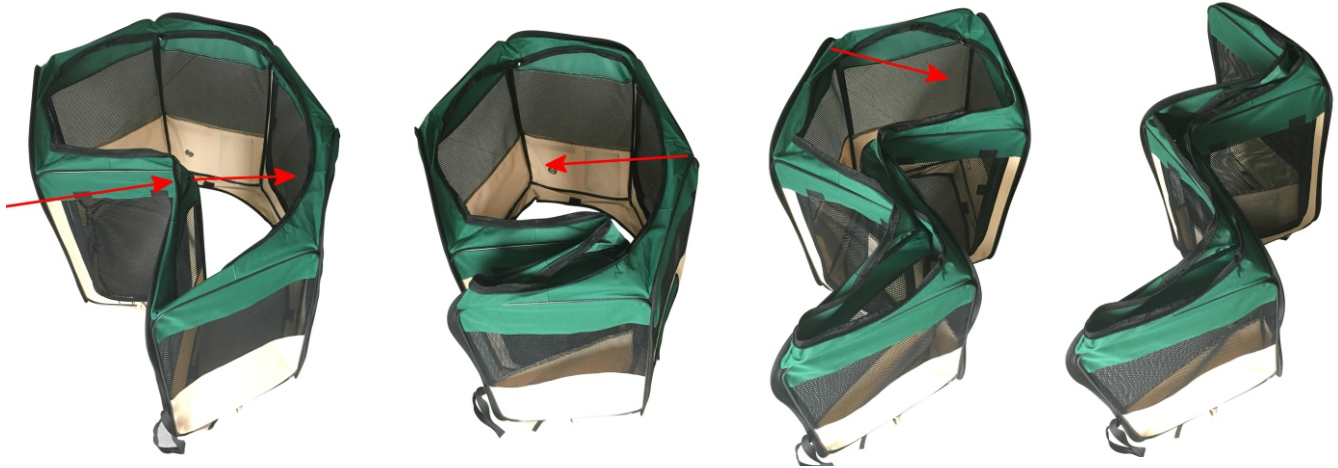
Paso 1: Sube la cremallera superior e inferior.



Paso 2: Encuentra la banda elástica.



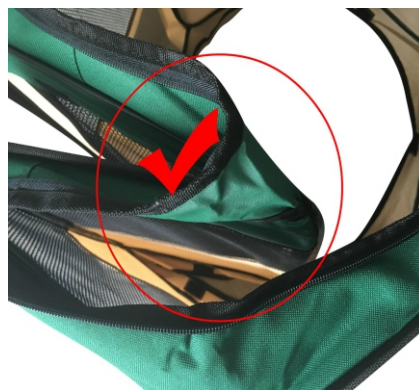
Paso 3: Dobla el panel que está al lado de la banda elástica, luego dobla los otros dos paneles como se muestra a continuación.



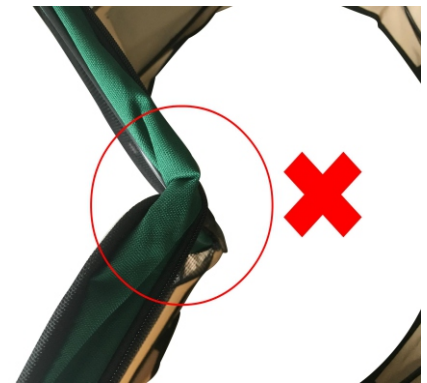
Paso 4: Dobla y amarra con la banda elástica.



Precaución: Cuando realice el paso 3, disponga todos los bordes como en la imagen A. Si dobla los bordes como en la imagen B, la estructura podría dañarse.



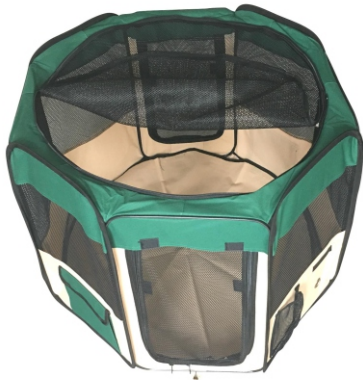
A



B

Como Dobrar

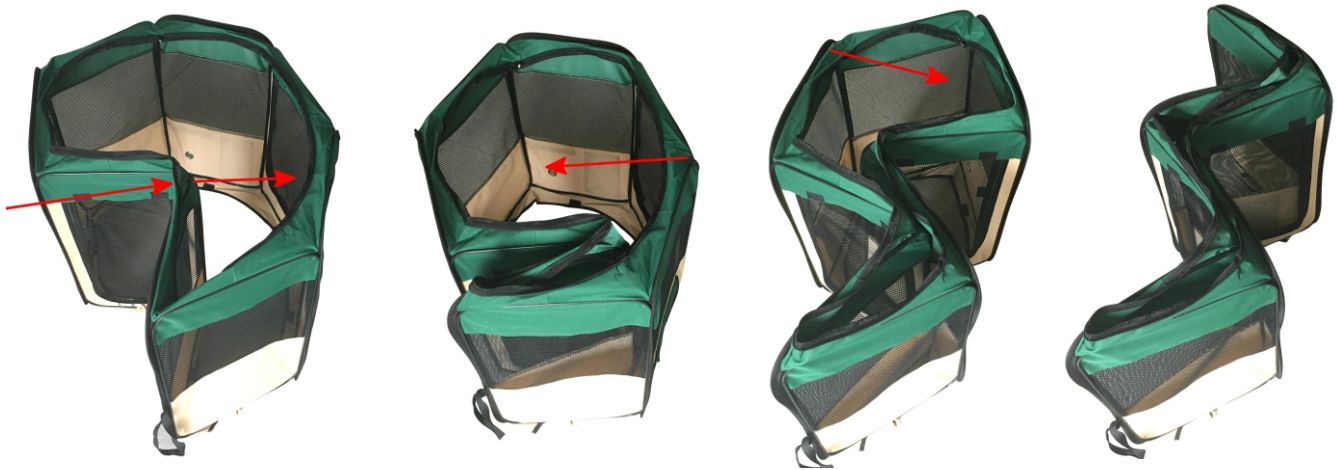
Passo 1: Abrir o zíper da parte superior e inferior.



Passo 2: Encontrar a banda elástica.

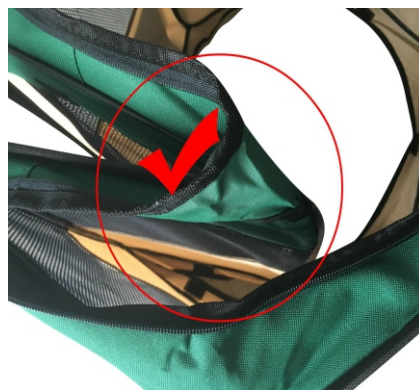


Passo 3: Dobrar o painel que está junto à banda elástica, depois dobrar os outros dois painéis como mostrado a baixo

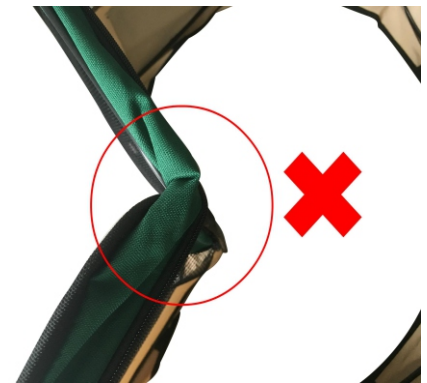


Passo 4: Depois de dobrado amarrar com a corda elástica.

Cuidado: Ao fazer a etapa 3, por favor, organizar todas as bordas como a imagem A. Se as bordas forem como a imagem B, o tubo interior pode ficar danificado.



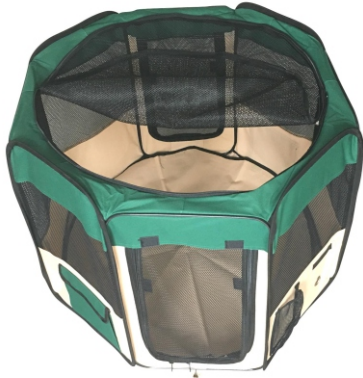
A



B

Zusammenklappen

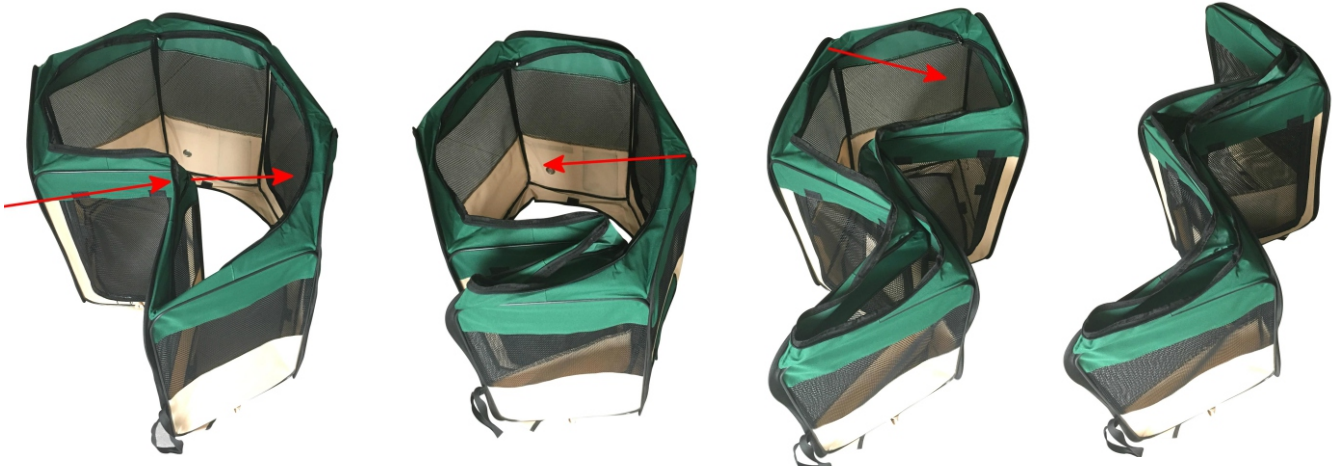
Schritt 1: Öffnen Sie den Reißverschluss oben und unten.



Schritt 2: Finden Sie das Gummiband.



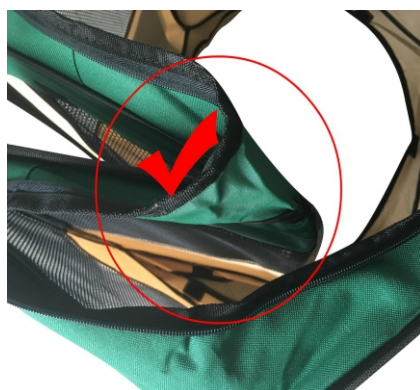
Schritt 3: Falten Sie die Wand, die sich neben dem Gummiband befindet, und falten Sie dann die beiden anderen Wände, wie unten dargestellt.



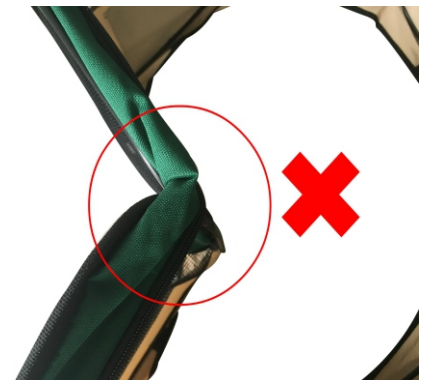
Schritt 4: Falten Sie sie flach und binden Sie sie mit dem Gummiband zusammen.



Achtung: Wenn Sie Schritt 3 ausführen, ordnen Sie bitte alle Kanten wie in Abbildung A an. Wenn die Kanten wie in Abbildung B aussehen, könnte der Stift beschädigt werden.



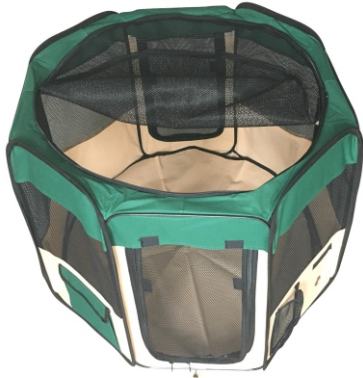
A



B

Come piegare

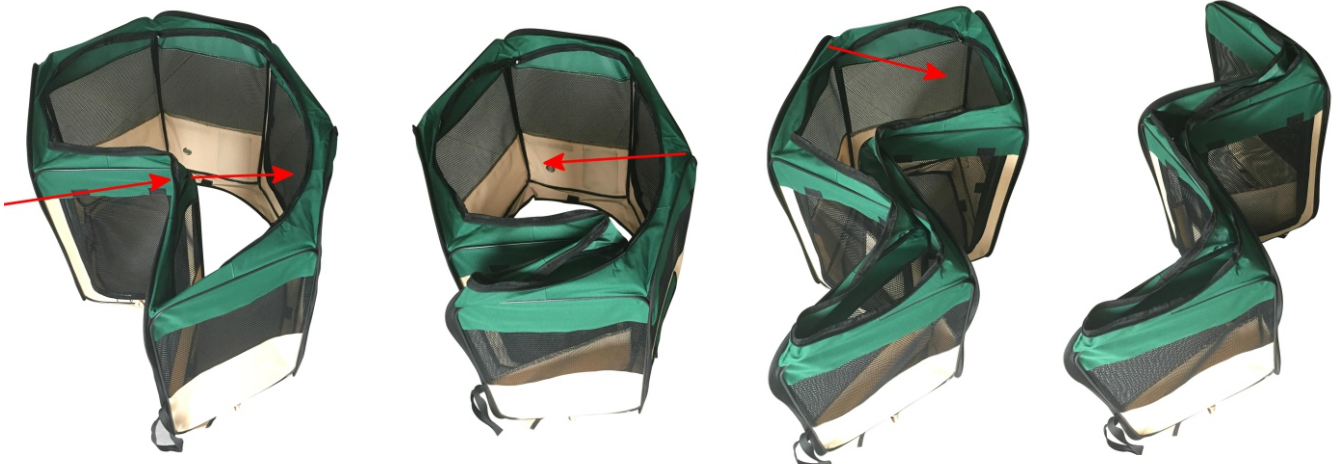
Passaggio 1: aprire le cerniere lampo in alto e in basso.



Passaggio 2: trovare il nastro elastico.



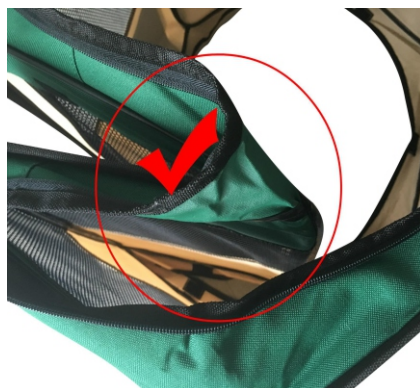
Passaggio 3: piegare il pannello accanto al nastro elastico, e poi piegare gli altri due pannelli come mostrato di seguito.



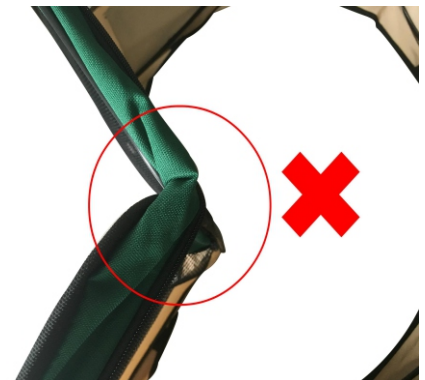
Passaggio 4: piegare fino che non diventa piano e poi legare con il nastro elastico.



Attenzione: quando si esegue il passaggio 3, disporre tutti i bordi come nell'immagine A. Se i bordi sono come nell'immagine B, il palo potrebbe danneggiarsi.



A



B

US

If you have any questions, please contact our customer care center.

Our contact details are below:

 001-877-644-9366


 customerservice@aosom.com

Imported by Aosom LLC
27150 SW Kinsman Rd Wilsonville, OR 97070 USA
MADE IN CHINA

ES

Si tiene alguna pregunta, comuníquese con nuestro Centro de Atención al Cliente.

Nuestros datos de contacto son los siguientes:

 0034-931294512


 atencioncliente@aosom.es

IMPORTADOR:
SPANISH AOSOM, S.L.
C/ ROC GROS, Nº 15. 08550, ELS HOSTALETES DE BALENYÀ, SPAIN.
B66295775
WWW.AOSOM.ES
HECHO EN CHINA

CA

If you have any questions, please contact our customer care center.

Our contact details are below:

 416-792-6088

 customerservice@aosom.ca

Imported by Aosom Canada Inc.
7270 Woodbine Avenue, Unit 307, Markham,
Ontario Canada L3R 4B9
MADE IN CHINA

PT

Se tiver alguma dúvida, por favor contacte o nosso Centro de Atendimento ao Cliente.

Os nossos dados de contacto são os seguintes:

 0034-931294512 (SEG-SEX DAS 7:30H ÀS 16:30H)


 info@aosom.pt.

IMPORTADOR:
SPANISH AOSOM, S.L
C.ROC GROS N.15, 08550. ELS HOSTALETES DE BALENYÀ
WWW.AOSOM.PT

DE

Si vous avez la moindre question, veuillez contacter notre centre d'assistance à la clientèle.

Nos coordonnées sont les suivantes:

 416-792-6088

 customerservice@aosom.ca

Importé par Aosom Canada Inc.
7270 Woodbine Avenue, unité 307,
Markham, Ontario Canada L3R 4B9
Fabriqué en Chine

Wenn Sie Fragen haben, wenden Sie sich bitte an unser Kundendienstzentrum.

Unsere Kontaktdaten stehen unten:

 0049-0(40)-88307530  service@aosom.de

ADRESSE DES IMPORTEURS:

MH Handel GmbH
Wendenstraße 309
D-20537 Hamburg
Germany
IN CHINA HERGESTELLT

UK

If you have any questions, please contact our customer care center.

Our contact details are below:

 0044-800-240-4004


 enquiries@mhstar.co.uk

IMPORTER ADDRESS:
MH STAR UK LTD
Unit 27, Perivale Park,
Horsenden lane South
Perivale, UB6 7RH
MADE IN CHINA

IT

In caso di dubbio, si prega di contattare il nostro centro assistenza clienti.

I nostri dettagli di contatto sono di seguito:

 0039-0249471447

 clienti@aosom.it

IMPORTATO DA:
AOSOM Italy srl
Centro Direzionale Milanofiori
Strada 1 Palazzo F1
20057 Assago (MI)
P.I.: 08567220960
FATTO IN CINA

FR

Si vous avez la moindre question, veuillez contacter notre centre d'assistance à la clientèle.

Nos coordonnées sont les suivantes:  0033-1-84166106  aosom@mhfrance.fr

Importé par: MH France 2, rue Maurice Hartmann 92130 Issy-les-Moulineaux

Fabriqué en Chine

France



FR

DONNEZ
OU
RECYCLEZ



OU



OU



ASSOCIATION LIVRAISON DÉCHÈTERIE

Adresses sur quefairedemesdechets.fr