



IN230300180V01\_US

**431-078V00\_431-079V00**



431-079V00



431-078V00

# **BABY PLAYPEN WITH SAFETY LOCK**

**WARNING: Certification Age: 6-24 months.**

**IMPORTANT, RETAIN FOR FUTURE REFERENCE: READ CAREFULLY**

## **ASSEMBLY INSTRUCTION**

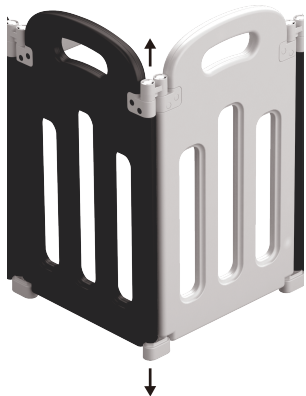
## PART NAME



## PART DESCRIPTION

431-078V00				
			A	x1
A	B	C	B	x1
Safety Gate	Big Playpen Panel	Small Playpen Panel	C	x12
431-079V00				
			A	x1
A	B	C	B	x1
Safety Gate	Big Playpen Panel	Small Playpen Panel	C	x16

## INSTALLATION INSTRUCTIONS



1. Folding fence: as shown, when you need to adjust the fence, the top of the fixed connection buckle pull up, the bottom of the anti-skid connection buckle pull down. (after hearing a "Click") the clasp is loose so that the fence can be adjusted.



2. Check: when the fence piece adjustment is completed, the corresponding buckle accessories pressed in place, can be fixed, to check whether the buckle is installed in place, fastening. Note: The fence can be completely folded only when the total number of pieces: 10/14/18

## **WARNING:**

- 1.Users and guardians should read this package information and instructions carefully before use.and assemble the product correctly according to the instructions. If some parts are not properly installed, it may be dangerous
- 2.Product should be assembled by adults only.
- 3.The product must be placed on a flat floor to play.
- 4.Product is only for family and indoor use.
- 5.Use it when the locking mechanism is locked.
- 6.Open plastic bag before use. Do not destroy the plastic bag or keep it away from children to avoid the risk of suffocation.

## **WARNING:**

- 1.Do not leave anything that may be used as a stepping point or cause suffocation or strangulation in the playpen;
- 2.Avoid fire and other strong heat sources, such as sparks, gas flames, etc. around the playpen;
- 3.Do not use the product if any part of the playpen is damaged, torn or missing;
- 4.When the child begins to stand on his or her hands or knees, entanglement or strangulation may occur if the toy is not removed;
- 5.Do not leave children unattended when playing in the playpen;
- 6.This product is suitable for children under 44lbs;
- 7.Never use this product when a child is able to climb over it or his height is over 3.3ft;
- 8.Failure to follow these warnings and instructions may result in serious injury.

## **CARE AND MAINTENANCE:**

- 1.Wipe the dirt off the surface with a dry or damp cloth
- 2.Regularly check whether the components are assembled firmly: Keep periodic inspection of the flexibility of each rotating component: Toy may fall over or be in danger if not checked.
- 3.It is very important to operate as follows during regular use or at the beginning of each season  
Check whether all bolts and nuts are tight. If necessary, tighten them:  
Check the sharp edges of all bolts. Replace them if necessary:When the product is shaken or has a strong friction sound, check if all bolts and nuts are tightened and replace them if necessary:Please save the instruction for future reference.

If you have any questions, please contact our customer care center.  
Our contact details are below:



001-877-644-9366



customerservice@aosom.com

Imported by Aosom LLC  
27150 SW Kinsman Rd Wilsonville, OR 97070 USA  
MADE IN CHINA

