



Aoson

IN231100021V01_US_CA

D00-185V00



EN_IMPORTANT, RETAIN FOR FUTURE REFERENCE: READ CAREFULLY.

**FR_IMPORTANT: A LIRE ATTENTIVEMENT ET À CONSERVER POUR CONSULTATION
ULTÉRIEURE.**

ES_IMPORTANTE, LEA Y GUARDE PARA FUTURAS REFERENCIAS.

PT_IMPORTANTE, RETER PARA REFERÊNCIA FUTURA: LEIA ATENTAMENTE.

DE_WICHTIG! SORGFÄLTIG LESEN UND FÜR SPÄTER NACHSCHLAGEN AUFBEWAHREN.

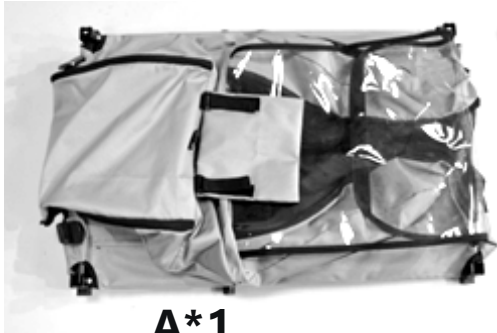
**IT_IMPORTANTE! CONSERVARE IL PRESENTE MANUALE PER FUTURO RIFERIMENTO E
LEggerlo ATTENTAMENTE.**

Warning and Safety Information:

- This trailer is for pet and cargo use, not for child.
- Use bicycles with 22" to 28" wheels capable of pulling a 40 kg trailer.
- Never exceed a safe speed. Recommended maximum speed is 8 MPH (13KM/H) and slowing to no more than 3 MPH (5KM/H) when turning.
- Riders must wear an approved bicycle helmet when riding in this product.
- Always use the safety flag when pulling this trailer.
- The person riding the towing bicycle should be at least 16 years of age and in good physical condition.

WARNING: Keep small parts away from children during assembly.

All parts pictures:



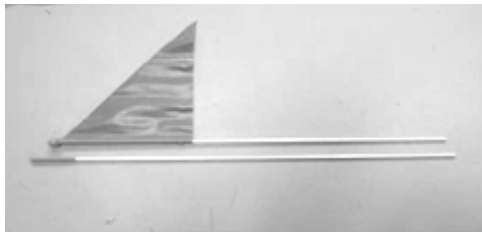
A*1



B*1



C*2



D*1

1. Assemble the frame



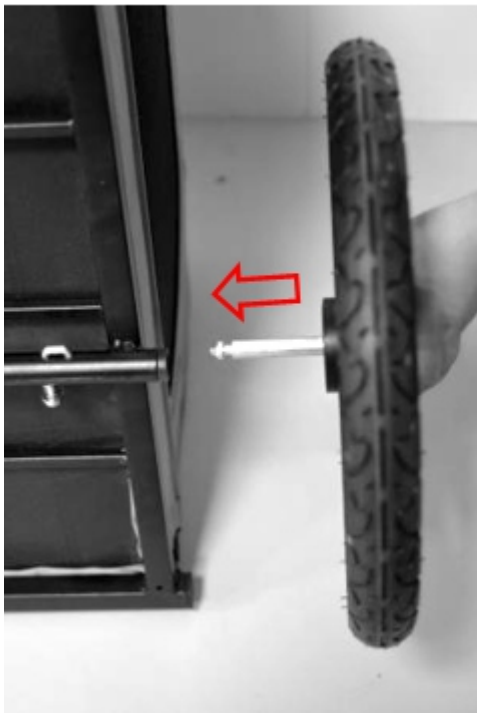
2. Assemble the tow bar



Tow bar

TN: The pin is locked !

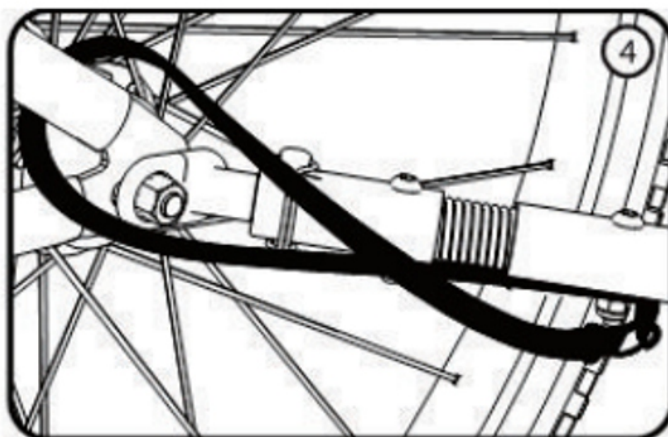
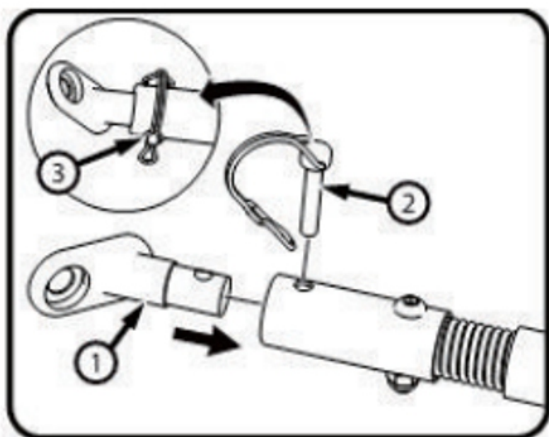
3. Install the wheel



ATTN: Pull outward to check that the wheels are locked!



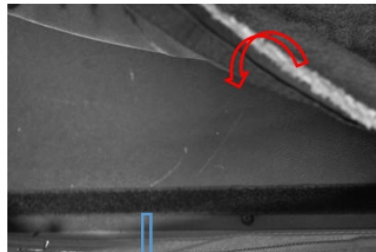
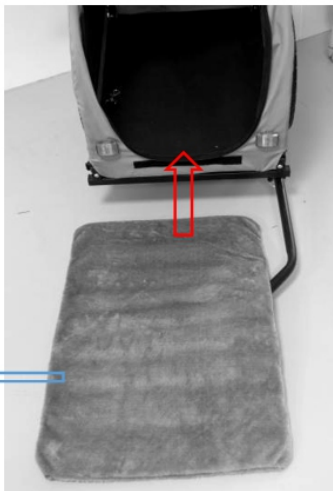
4. Connect the tow bar to the bike



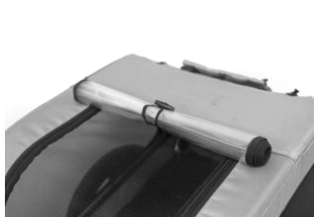
5. Install the flag



6. Removable pet mat



7. Other functions

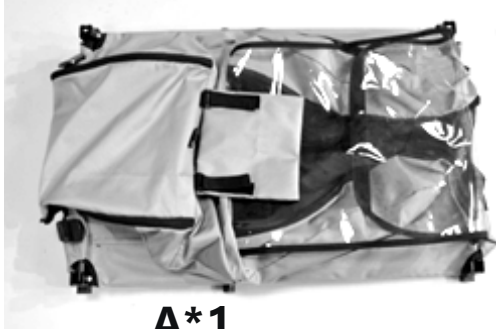


Avertissement et informations de sécurité :

- Cette remorque est destinée aux animaux de compagnie et aux cargaisons, pas aux enfants.
- Utilisez des vélos avec des roues de 22 à 28 pouces capables de tirer une remorque de 40 kg.
- Ne dépassez jamais une vitesse sûre. La vitesse maximale recommandée est de 8 MPH (13KM/H). ralentir au maximum à 3 MPH (5KM/H) dans les virages.
- Les cyclistes doivent porter un casque de vélo homologué lorsqu'ils utilisent ce produit.
- Utilisez toujours le drapeau de sécurité lorsque vous tirez cette remorque.
- La personne qui conduit le vélo de remorquage doit être âgée d'au moins 16 ans et être en bonne condition physique.

AVERTISSEMENT : Tenez les petites pièces hors de portée des enfants pendant l'assemblage.

Toutes les photos des pièces



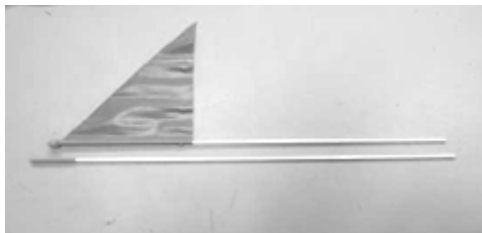
A*1



B*1

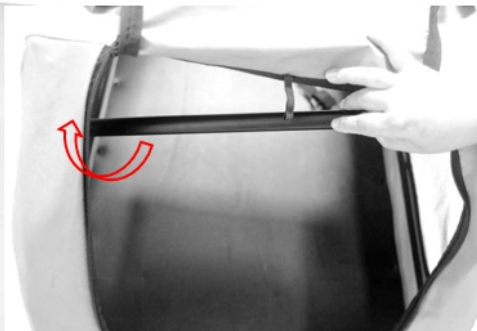


C*2



D*1

1. Assembler le cadre



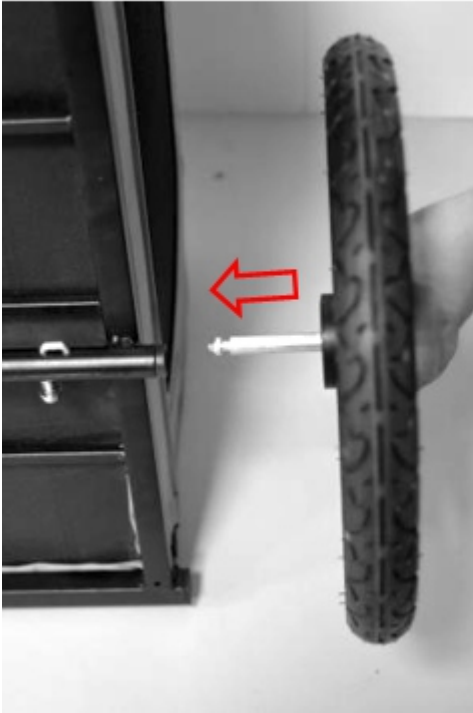
2. Assembler la barre de remorquage



Barre de remorquage

TN : La broche est verrouillée !

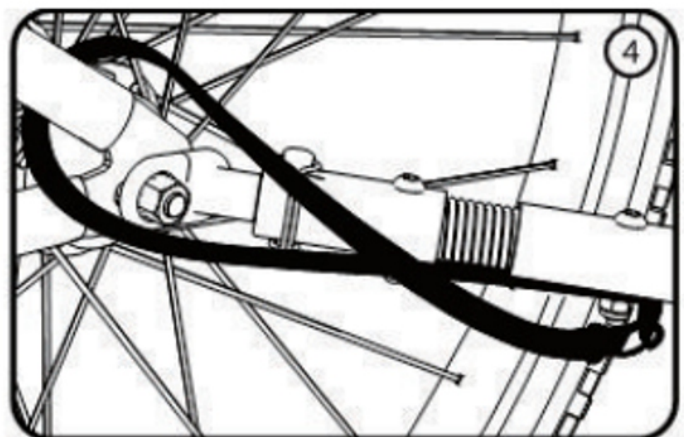
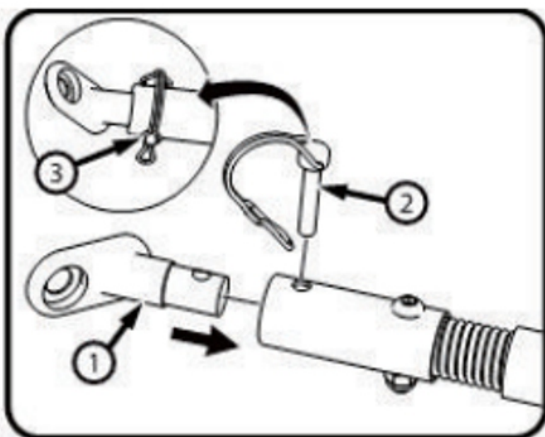
3. Installer la roue



ATTN : Tirez vers l'extérieur pour vérifier que les roues sont bloquées



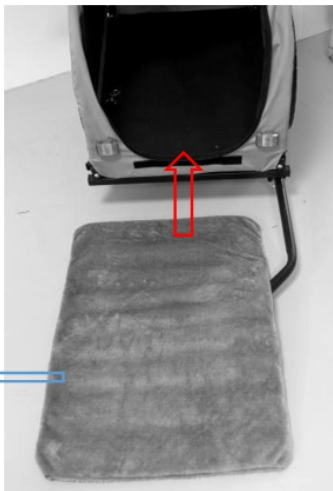
4. Connecter la barre de remorquage au vélo



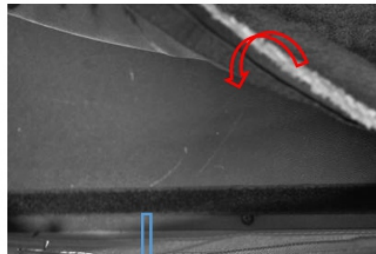
5. installer le drapeau



6. Tapis amovible pour animaux



Mat

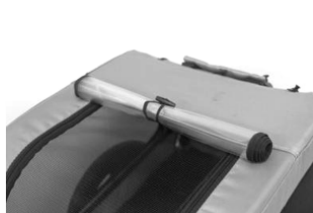




Velcro





7. autres fonctions



←





If you have any questions, please contact our customer care center. **US**
Our contact details are below:
 001-877-644-9366
 customerservice@aosom.com
Imported by Aosom LLC
27150 SW Kinsman Rd Wilsonville, OR 97070 USA
MADE IN CHINA


Si tiene alguna pregunta, comuníquese con nuestro Centro de Atención al Cliente. **ES**
Nuestros datos de contacto son los siguientes:
 0034-931294512
 atencioncliente@aosom.es
IMPORTADOR:
SPANISH AOSOM, S.L.
C/ ROC GROS, Nº 15. 08550, ELS HOSTALETES DE BALENYÀ, SPAIN.
B66295775
WWW.AOSOM.ES
HECHO EN CHINA



If you have any questions, please contact our customer care center. **CA**
Our contact details are below:
 416-792-6088
 customerservice@aosom.ca
Imported by Aosom Canada Inc.
7270 Woodbine Avenue, Unit 307, Markham, Ontario Canada L3R 4B9
MADE IN CHINA

Se tiver alguma dúvida, por favor contacte o nosso Centro de Atendimento ao Cliente. **PT**
Os nossos dados de contacto são os seguintes:
 0034-931294512 (SEG-SEX DAS 7:30H ÀS 16:30H)
 info@aosom.pt.
IMPORTADOR:
SPANISH AOSOM, S.L
C.ROC GROS N.15, 08550. ELS HOSTALETES DE BALENYÀ
WWW.AOSOM.PT

Si vous avez la moindre question, veuillez contacter notre centre d'assistance à la clientèle. **FR**
Nos coordonnées sont les suivantes:
 416-792-6088
 customerservice@aosom.ca
Importé par Aosom Canada Inc.
7270 Woodbine Avenue, unité 307, Markham, Ontario Canada L3R 4B9
Fabriqué en Chine

Wenn Sie Fragen haben, wenden Sie sich bitte an unser Kundendienstzentrum. **DE**
Unsere Kontaktdaten stehen unten:
 0049-0(40)-88307530  service@aosom.de
ADRESSE DES IMPORTEUR:
MH Handel GmbH
Wendenstraße 309
D-20537 Hamburg
Germany
IN CHINA HERGESTELLT

If you have any questions, please contact our customer care center. **UK**
Our contact details are below:
 0044-800-240-4004
 enquiries@mhstar.co.uk
IMPORTER ADDRESS:
MH STAR UK LTD
Unit 27, Perivale Park,
Horsenden lane South
Perivale, UB6 7RH
MADE IN CHINA

In caso di dubbio, si prega di contattare il nostro centro assistenza clienti. **IT**
I nostri dettagli di contatto sono di seguito:
 0039-0249471447  clienti@aosom.it
IMPORTATO DA:
AOSOM Italy srl
Centro Direzionale Milanofiori
Strada 1 Palazzo F1
20057 Assago (MI)
P.I.: 08567220960
FATTO IN CINA

Si vous avez la moindre question, veuillez contacter notre centre d'assistance à la clientèle. **FR**
Nos coordonnées sont les suivantes:  0033-1-84166106  aosom@mhfrance.fr
Importé par: MH France 2, rue Maurice Hartmann 92130 Issy-les-Moulineaux
Fabriqué en Chine
France



Adresses sur quefairedemesdechets.fr