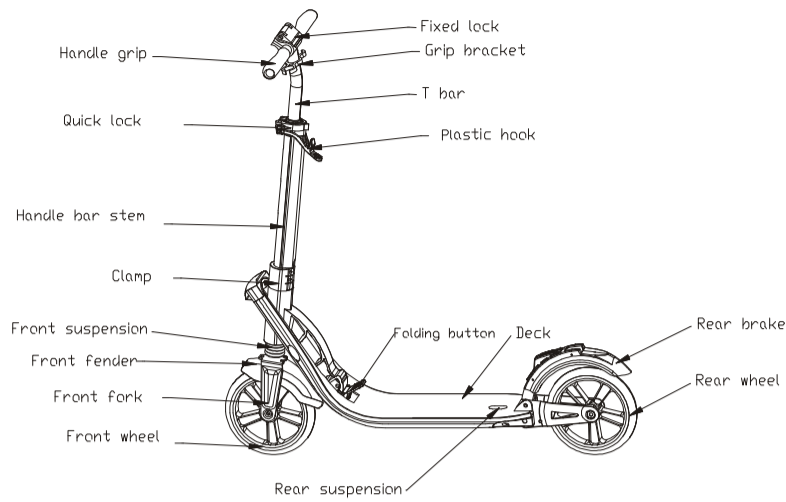


Please read this safety notice and building instructions before using the scooter. Please store these instructions together with the purchase receipt. Please make sure all parts are good before using.



## Safety References

**!** This scooter does not adhere to the Road Traffic Licensing Regulations and may therefore not be used in traffic. Obey all local traffic and scooter riding laws and regulations. Please ensure that this scooter is only used in areas without motor vehicles and never near stairs, on steep ground and swimming pools or other bodies of water. Do not use for tricks, acrobatic performances, jumping, stunt riding or similar. Do not use on steep slopes, valleys or wet/icy ground. Only use on dry, hard and level ground. Use with one rider only.

**!** Regular maintenance enhances the safety of the kick scooter. Please check if self-locking nuts and other self-locking fixings may lose their effectiveness and change them. If applicable, please take care to replace the wheels. Please never make any modifications on the scooter.

- !** The brake will get hot from continuous. Do not touch after breaking.
- !** Do not use at evening/night or during poor visibility and also not after consuming alcohol or drugs.
- !** Avoid excessive speed especially associated with downhill rides.
- !** Adults must assist children in the initial adjustment procedures to unfold scooter, adjust handlebar and steering to height, and finally to fold scooter.
- !** Always inspect all parts and locking mechanism before every use. Do not use scooter if any parts are broken, damaged or unsecured. Do not customize scooter or use repair parts not supplied by the supplier. Adult assembly required.
- !** Always make sure to wear suitable protection. It is essential that the proper shoes and a protective helmet be worn at all times!
- !** It's recommended to clean and dry the scooter after each use. Store it in its original carton when not in use. Keep away from any corrosive materials.
- !** The scooter model with 200mm wheel size is recommended for Ages 14 years & up. It is not suitable for people who weigh more than 100 kg max.
- !** Do not make your foot touch folding button when you ride it.
- !** The manufacturer cannot be held responsible or made accountable for damage that is a result of usage other than that specified in the documentation.

## Assembly Instruction

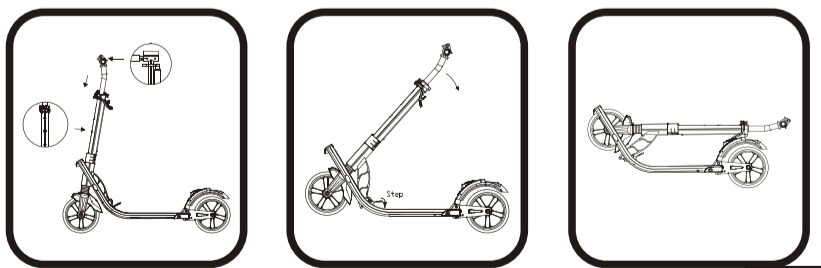
### I. Unfolding



Pull the plastic hook upwards to unlock the folding system and pull the handle bar stem downwards. When you sound clicks, the scooter is completely unfolded.

Release the handle from grip bracket and open the fixed lock then insert handle into the T-bar. Make sure the spring button pops out to secure in position properly and close fixed lock. To adjust T-bar, release the upper lock and press the spring button, then adjust the T-bar at 3 height levels properly according to user's height. The spring button must pop into fixation hole. Then tighten the upper lock to secure T-bar.

### II. Folding



Loosen the quick lock, press the spring button and push down the T-bar at lowest height level. Then tighten the quick lock to secure the T-bar.

Open the fixed lock and press spring button and release the handle from T-bar, then fix the handle on grip bracket and tighten the fixed lock.

Stepping the folding button as well as pushing the handle bar stem with a little power and pull the handle bar stem downwards. When you sound clicks, the scooter is completely folded.

## Service

If you have any questions or problems please contact your dealership or contact us directly.