



Read the information supplied by the manufacturer



Wear personal protective equipment

advice on making ready for use in order to avoid pitching or entrapment;  
no modifications other than to the manufacturer's instructions shall be made;  
note indicating when self-locking nuts and other self-locking fixings may lose their effectiveness.

**IMPORTANT, RETAIN FOR FUTURE REFERENCE: READ CAREFULLY**

**ASSEMBLY INSTRUCTION**

THANK YOU FOR PURCHASING THIS PRODUCT!

Please read this instruction carefully and keep it for future use!

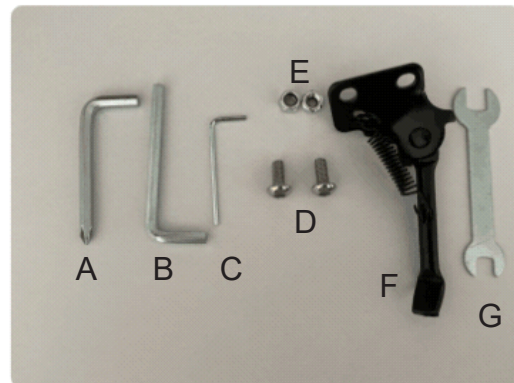
Please always include the instructions when handing on the product to a third party..

This product must be assembled by an adult. This product is designed for outdoor sports use. The use of the product requires specific skills and knowledge to be able to avoid injuries due to crashes and collisions.

#### CONTENTS

1 X Scooter  
1 X Instruction manual  
1 X Tool Kts

- A. Cross&Allen Wrench 5mm(26\*67mm) X1PC
- B. Allen Wrench 5mm(27\*72mm) X1PC
- C. Allen Wrench 2mm(17\*51mm) X1PC
- D.M6 screws X2PCS
- E.M6 NUT X2PCS
- F. Kick Stands X1PC
- G. Open-end wrench 8mm/10mm 1PC



#### SAFETY CAUTIONS

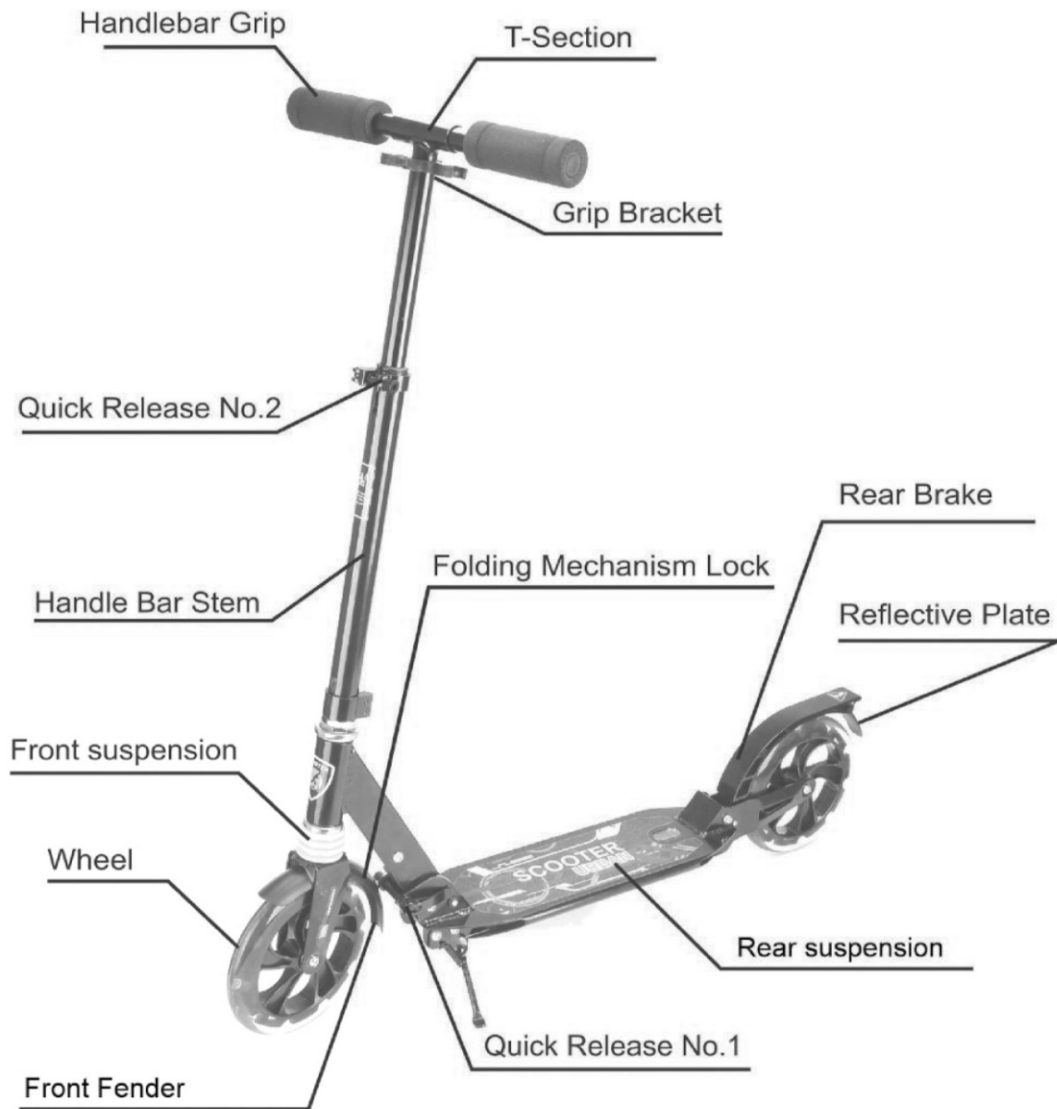
Warnings! Protective equipment should be worn always. Not to used in traffic. 100 kg max

- The scooter is only intended for use by one person and supervised by adult
- Only use it on surfaces that are suitable for it, i.e. those which are flat, clean, dry, and use the scooter where possible away from other road users. Avoid sloping ground. The brakes may become hot after the scooter has been used a while! Don't touched until cooled down.
- Always be considerate of others.
- Wear suitable protective equipment for your own safety. Never use the scooter without a helmet and hand/wrist, elbow and knee pads. Never use the scooter without shoes!
- Before begin-Ensure that all fasteners and locking parts are intact and tight, e.g. the folding mechanism and the height setting of the handlebar. The functions of self -securing screw threads can be impaired after repeated loosening and tightening of the connecting elements. Check especially for the correct alignment and fastening of the steering set-up.
- Make sure that the foot stand is folded rightly while driving.
- Do not use the scooter at twilight, at night or in poor visibility.
- Off road use only. Do not use it on roads, thorough fares & slopes or hills. Avoid being in the proximityof stairs and open water.
- The scooter is not suitable for jumps.

EN

- The scooter is not a vehicle in the sense of the road traffic regulations! It is intended for use on footpaths.

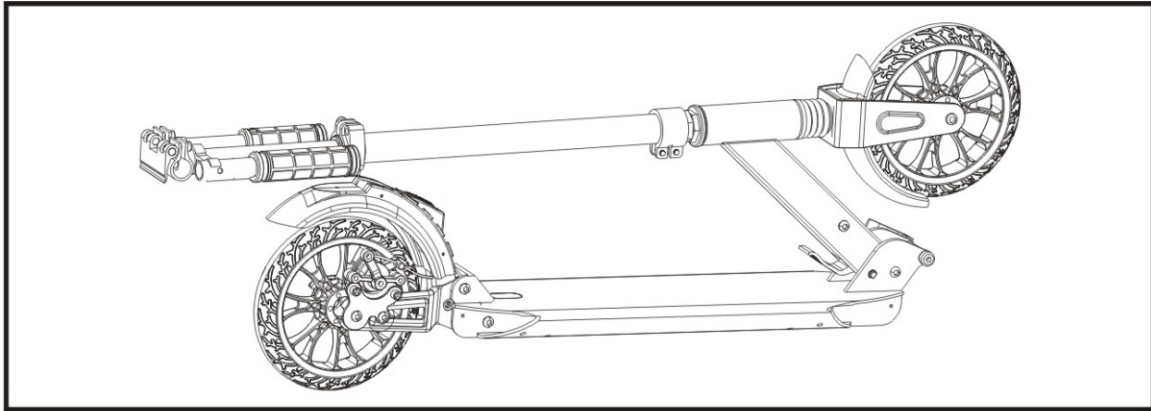
## PARTS DIAGRAM



EN

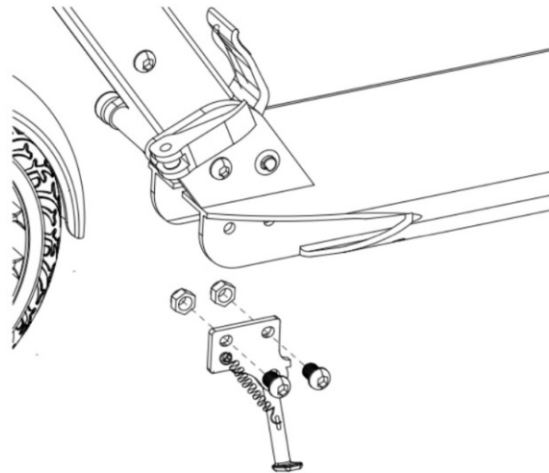
## ASSEMBLY INSTRUCTIONS

No tools are required to assemble the product. The tools attached is for maintenance use only.  
The scooter is delivered in its transport form (folded)!

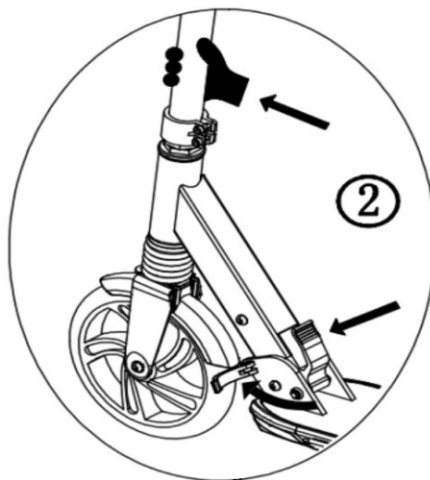


PLEASE PROCEED STEPS AS FOLLOWS TO GET THE SCOOTER READY

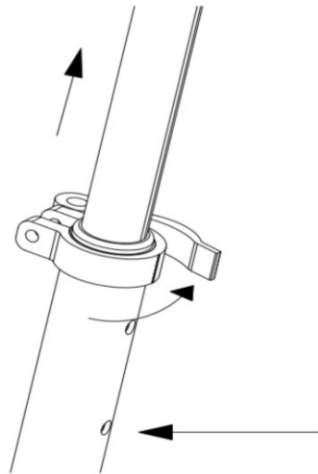
Take out kick stand from PP bag and Install it with tool.



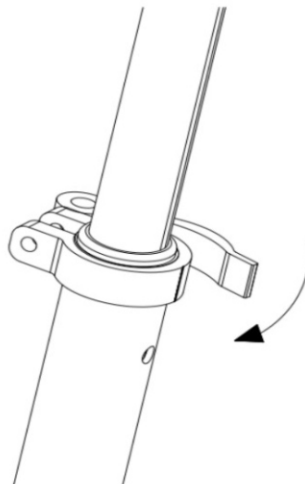
Release quick lock. push forward folding button and pull forward tube. It is completely folded when you sound clicks. Return back quick lock and ensure tighten it.



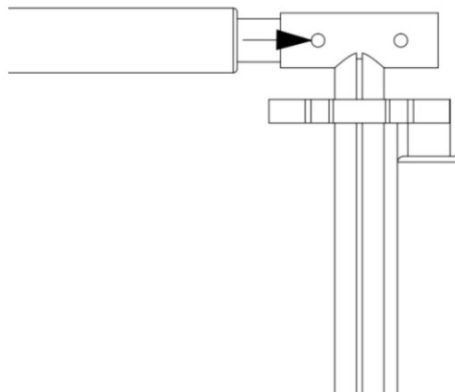
Release quick lock. Pull upward and adjust T-bar to three right height position according to user height.



Then return back quick lock and make sure tighten it.



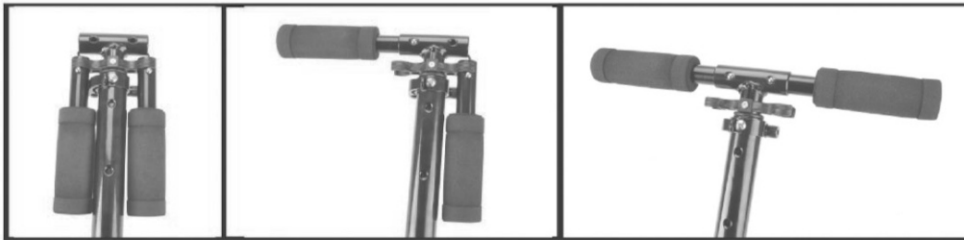
Pull apart handle grip from grip bracket and press the handle into T-bar. Ensure the spring handle pops out to secure in position properly.



The completely scooter is done. The children finish to unfold scooter must have under adults supervise.



Insert the handlebar grips into the T-section of the handlebar stem. Use thumbs to press down both locking buttons until the grips can be easily pushed into the T-section. Turn the handlebar grips until the locking buttons are positioned in the two openings and hear them click into place (Picture 5)



Loosen the quick release NO.2 lock on the handlebar stem by pushing the lever of the quick release lock until the lever is parallel to the handlebar grip. The handlebars can be locked into place at 3 different heights. Please adjust the height to required height. The maximum height is 105.5 cm, and cannot be exceeded due to the integrated lock. If the handlebar does not sit firmly at the required height, open the quick release lock again (Picture 6)



.Always check all parts before use to ensure they are fitting tightly particularly the folding mechanism, the handlebar locking and the wheels

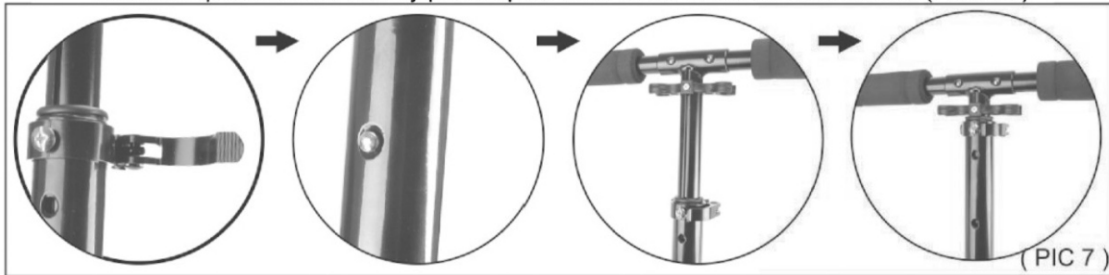
EN

## FOLDING INSTRUCTIONS

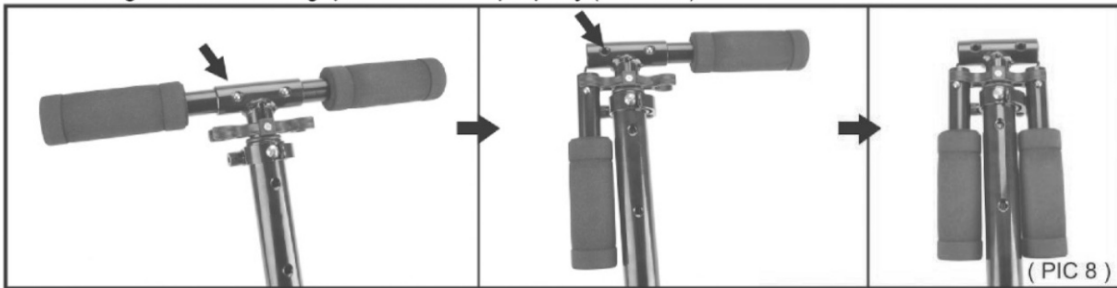
PLEASE PROCEED STEPS AS FOLLOWS FOLD THE SCOOTER

Step 1: Loosen the quick release lock NO.2 by pushing the lever away from the handle bar stem

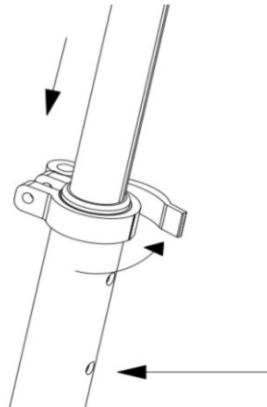
press the locking button so that the handlebar rod can be moved  
Push the T-Section as far as it will go into the handlebar stem.  
Close the quick release lock by pushing the lever down to the handlebar stem (Picture7)



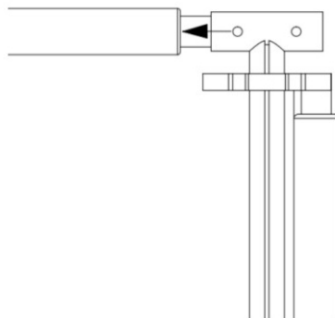
Use your thumbs to press both locking buttons in the handlebar grips and pull the handlebar grips outwards until they are released completely from the T-section.  
Hang the handle bar grips into bracket properly.(Picture8)



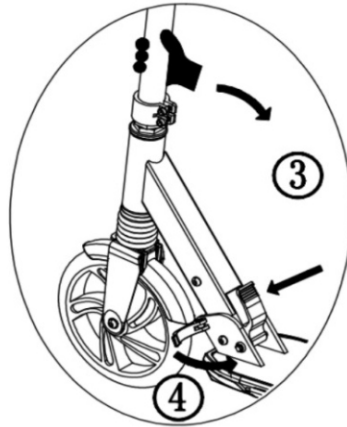
Loosen quick lock, press spring handle and push downwards to lowest lever and then tighten the quick lock.



Press spring handle and pull outwards handle grips. Hold on grips on grips bracket.



Loosen the quick lock and push forwards folding button, pull downwards tube. The scooter is folded completely when you sound clicks. Return back quick lock and ensure tighten it.



The folded scooter is done. The children finish to fold scooter must have under adults supervise.

