

IMPORTANT, RETAIN FOR FUTURE REFERENCE: READ CAREFULLY

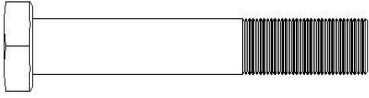
ASSEMBLY & INSTRUCTION MANUAL

LISTA PARTI

No.	Nome	Qta'	No.	Nome	Qta'
1	Tubo principale	1	17	Cuscinetto di supporto	2
2L/2R	Montante di estensione gamba verticale L/R	1	18	Vite Esagonale M10*60	2
3	Montanti	2	19	Vite Esagonale M10*65	4
4	Barra montante di supporto	1	20	Vite Esagonale M10*50	3
5	Tubo di collegamento	1	21	Vite Esagonale M10*16	6
6	Staffa di regolazione dello schienale	1	22	Dado M10	6
7	Manubrio	2	23	Dado Cieco M8	2
8	Barra della piastra pesi	2	24	Rondella Piatta Ø10	24
9	Tubo di supporto anteriore	1	25	Rondella ad Arco Ø8	2
10	Tubo di regolazione anteriore	1	26	Bullone di Supporto M8*60	2
11	Stabilizzatore anteriore	1	27	Rondella Piatta Ø6	6
12	Stabilizzatore posteriore	2	28	Vite M6*10	6
13	Lucchetto a U	2	29	Chiave S13-14-15	1
14	Perno	4	30	Chiave inglese	1
15	Cuscinetto dello schienale	1	31	Vite Esagonale M10*70	2
16	Manopola M10	2			

LISTA VITERIA & CHIAVI

#18 Vite Esagonale M10*60
2PZ



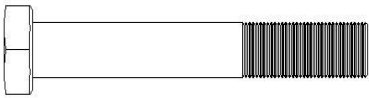
#19 Vite Esagonale M10*65
4PZ



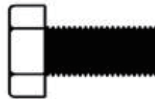
#22 Dado M10
6PZ



#20 Vite Esagonale M10*50
3PZ



#21 Vite Esagonale M10*16
6PZ



#23 Dado cieco M8
2PZ



#24 Rondella Piatta Ø10
24PZ



#25 Rondella ad arco Ø8
2PZ



#26 Bullone di supporto M8*60
2PZ



#27 Rondella Piatta Ø6
6PZ



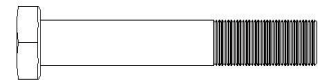
#28 Vite M6*10
6PZ



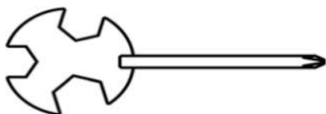
#30 Chiave inglese 13-14
1PZ



#31 Vite Esagonale M10*70
2PZ



#29 S13-14-15 Chiave 13-14-15
1PZ



#14 Perno
4PZ

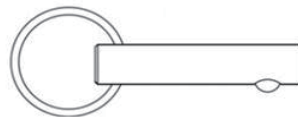
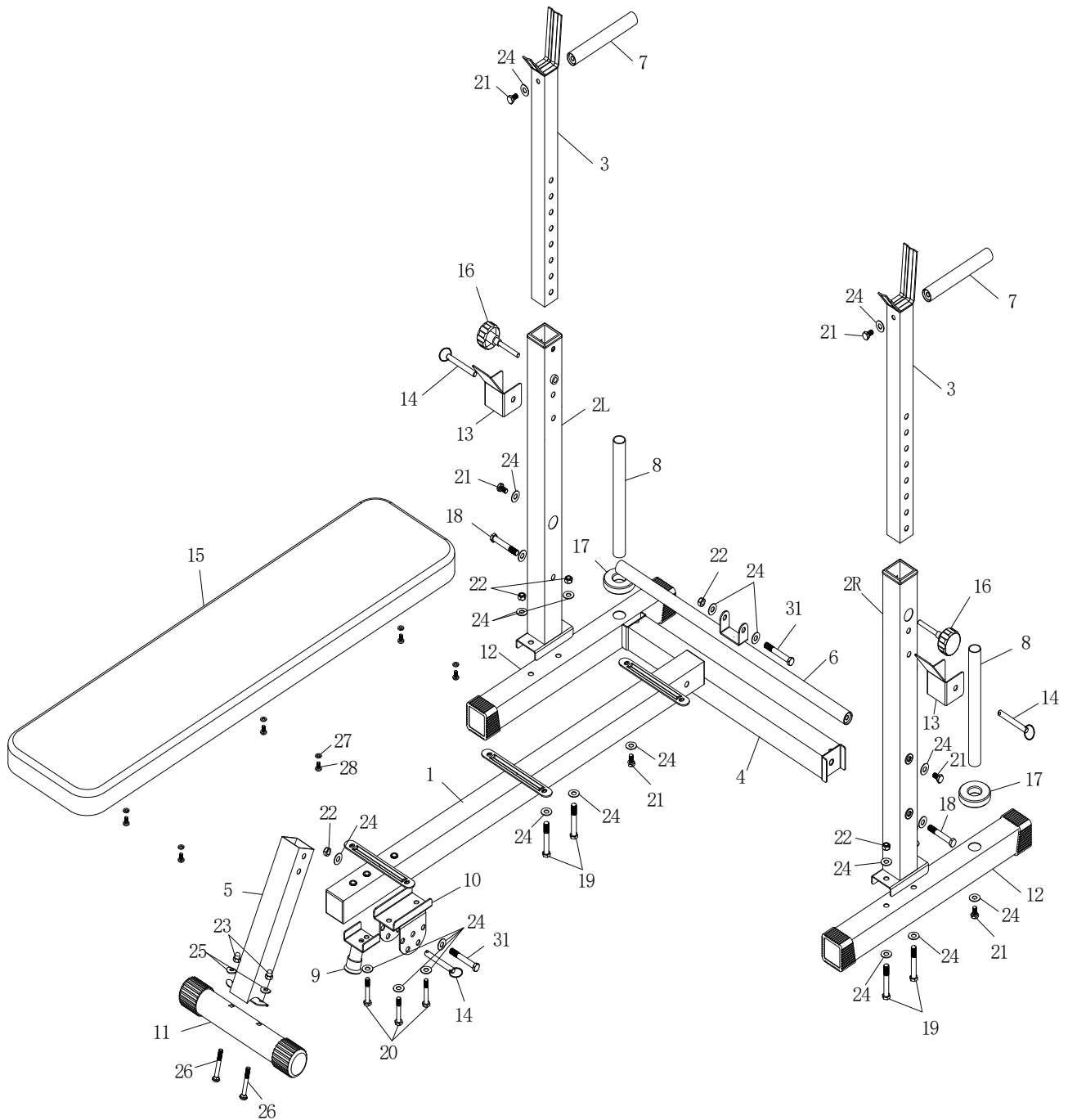
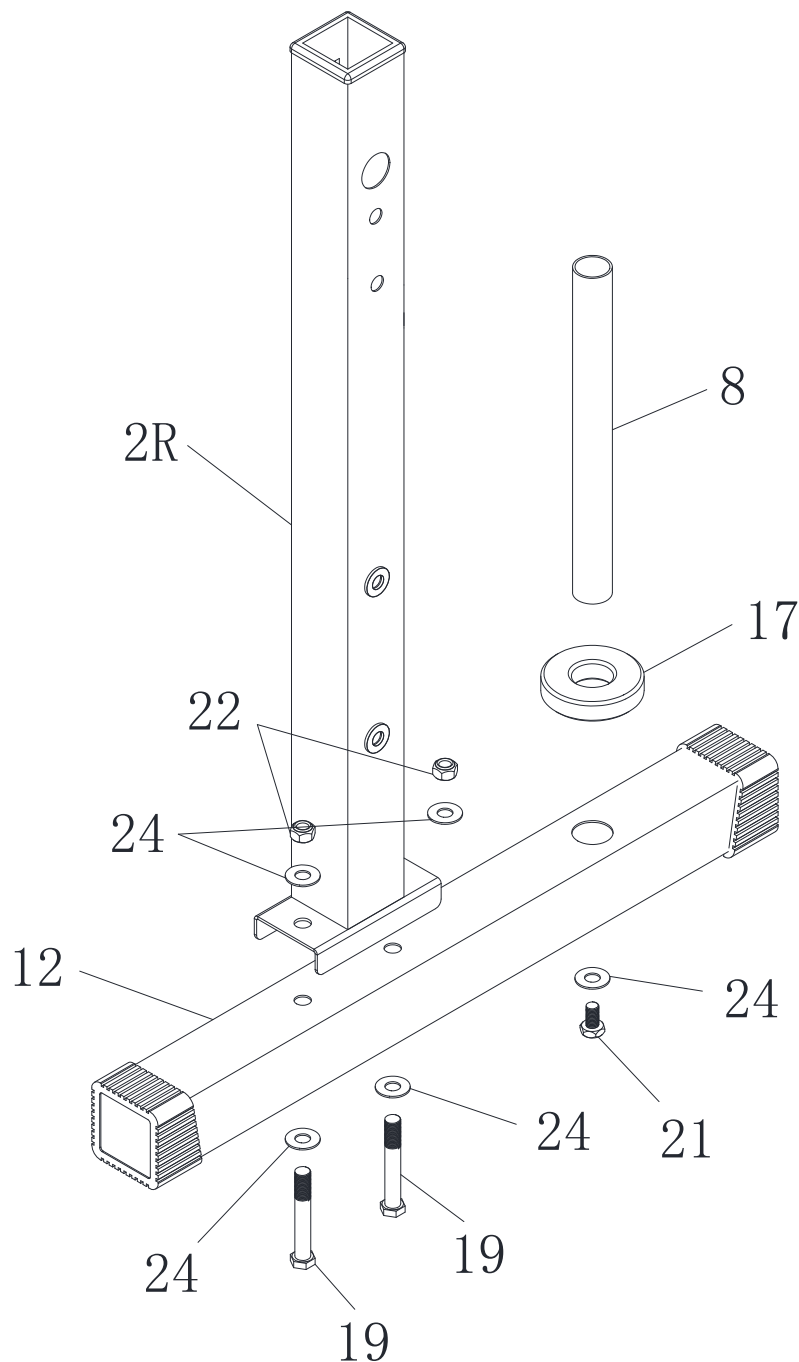


DIAGRAMMA DI ASSEMBLAGGIO ESPLOSO



ASSEMBLAGGIO

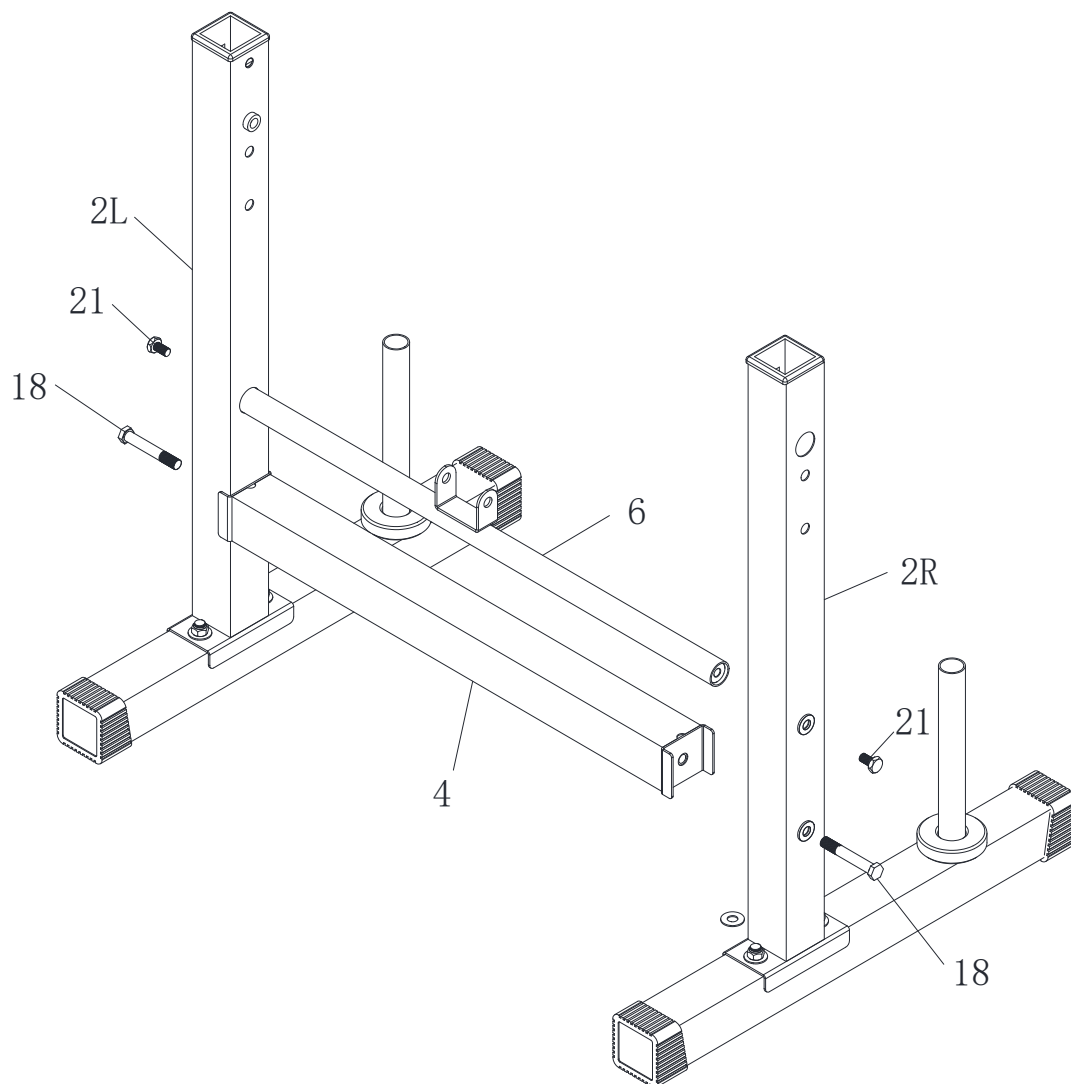


Passo 1:

1, Fissare il Montante di estensione della gamba verticale L/R (2L/2R) allo Stabilizzatore posteriore (12), fissare con quattro Rondelle piatte Ø10 (24) , due Dadi in nylon M10 (22) e due Viti esagonali M10*65 (19) .

2, Fissare la Barra della piastra (8) e il Cuscinetto di supporto(17) allo Stabilizzatore posteriore(12), fissare con la Rondella piatta Ø10 (24) e una Vite esagonale M10*16 (21) .

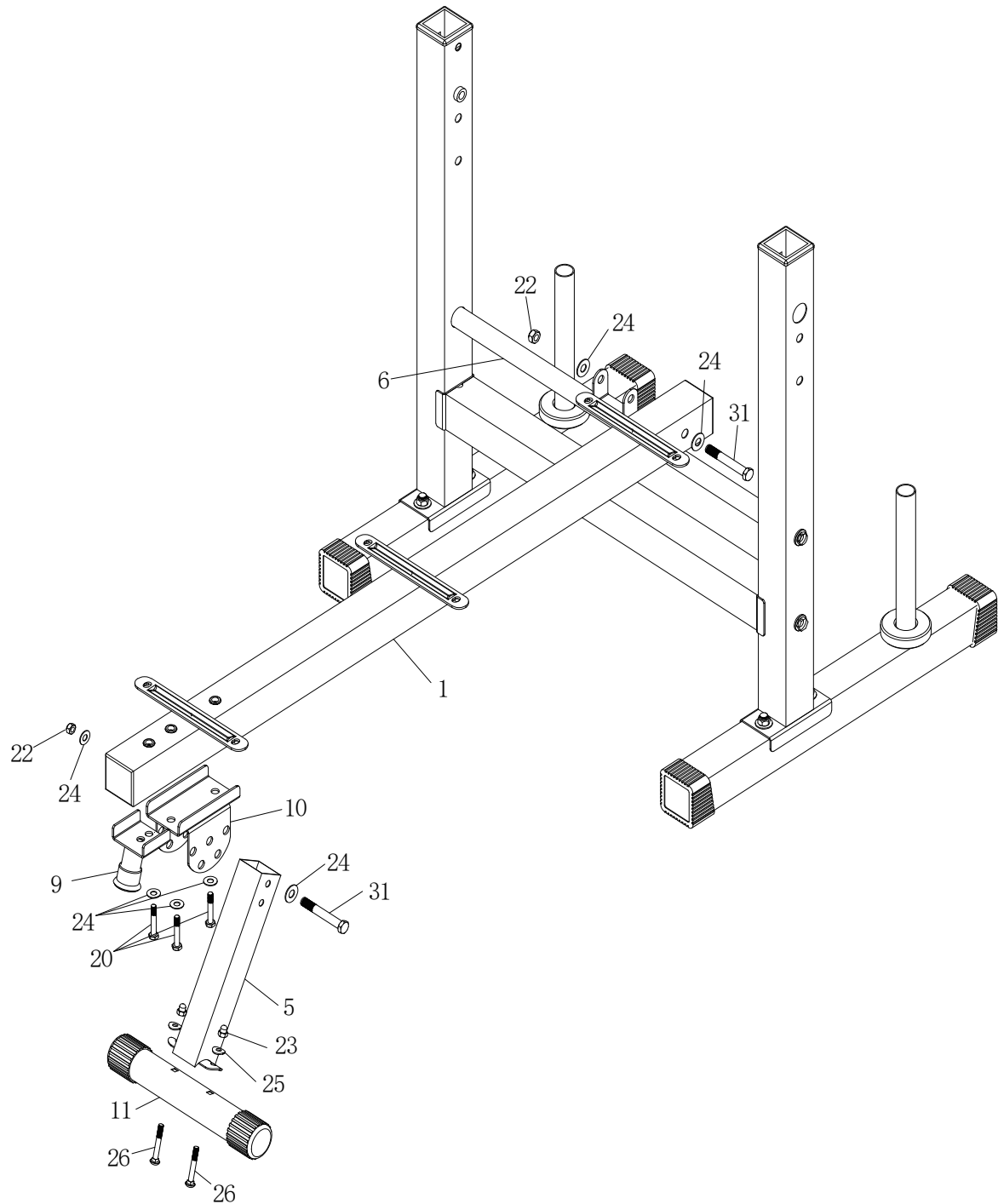
ASSEMBLAGGIOTT



Passo 2:

1, Fissare la Barra di supporto verticale (4) e la Staffa regolabile dello schienale (6) al Montante estensione della gamba L/R (2L/2R) e fissarla con due viti esagonali M10*60 (18) e due viti esagonali M10*16(21) .

ASSEMBLAGGIO



Passo 3:

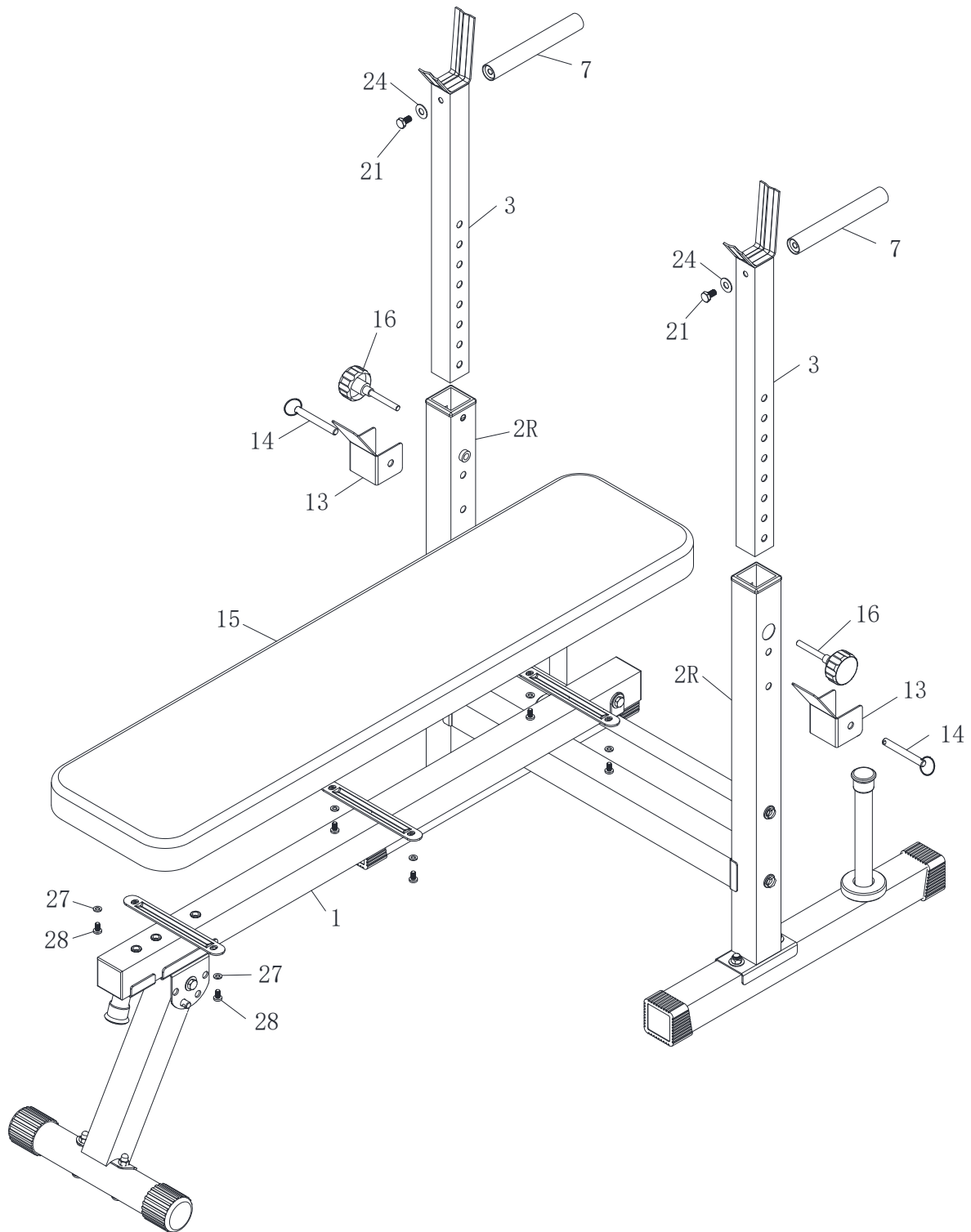
1, fissare lo Stabilizzatore anteriore (11) al Tubo di collegamento (5) con due Bulloni ciechi M8*60 (26), due Rondelle ad arco Ø8(25) e due Dadi ciechi M8 (23).

2, Fissare il Tubo di supporto anteriore (9) e il Tubo di regolazione anteriore (10) al Tubo principale (1) con tre Rondelle piatte Ø10 (24) e tre Viti esagonali M10*50 (20) .

3, Fissare il tubo di collegamento (5) al Tubo di regolazione anteriore (10) con due Rondelle piatte Ø10 (24) , un Dado in nylon M10 (22) e una Vite esagonale M10*65 (31) .

4, Fissare il Tubo principale (1) alla Staffa di regolazione dello (6) con due Rondelle piatte Ø10(24) , un Dado in nylon M10 (22) e una Vite esagonale M10*70 (31) .

ASSEMBLAGGIO



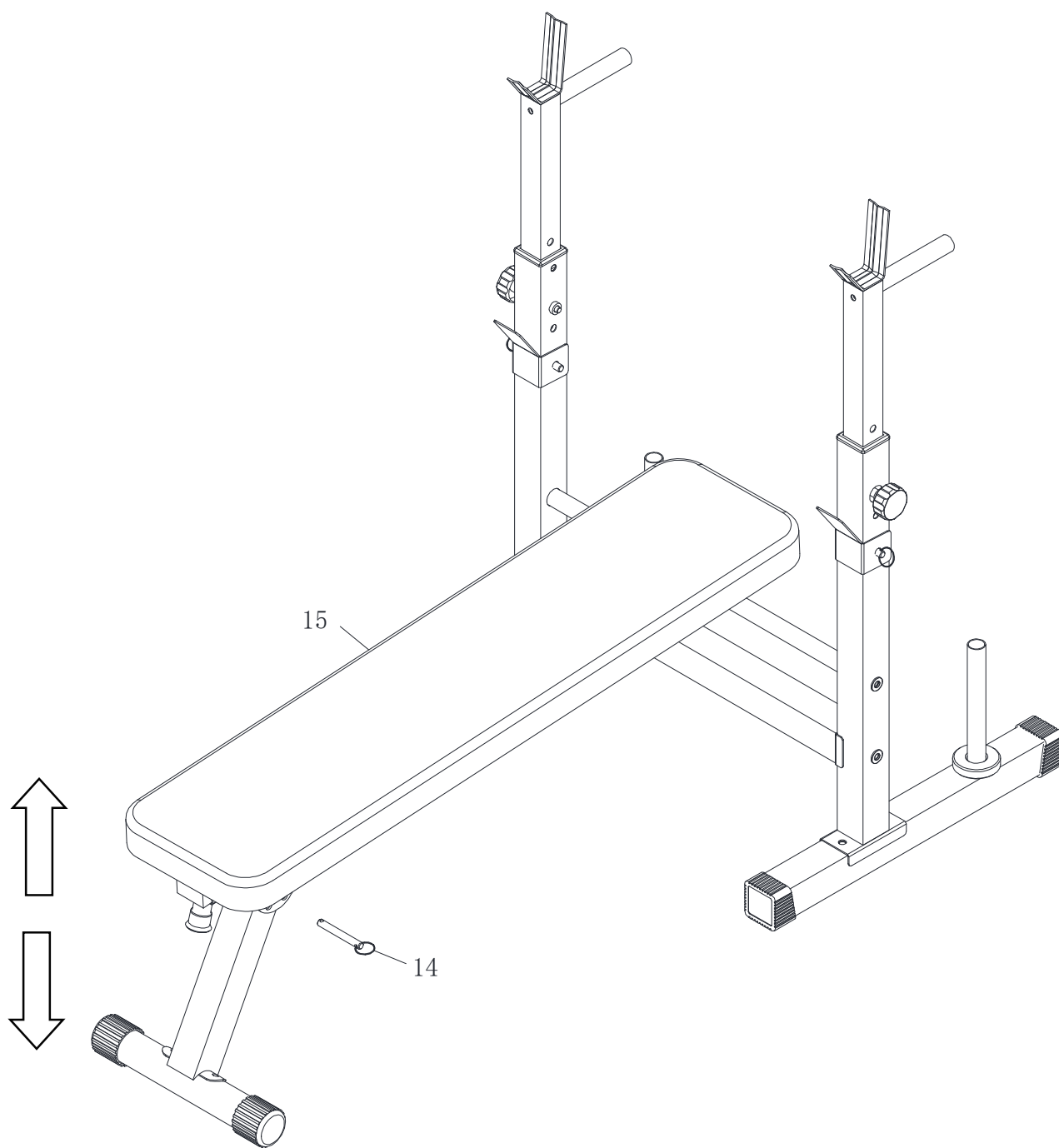
Passo 4:

1, Fissare il Cuscinetto dello schienale (15) al Tubo principale (1) con sei Rondelle piatte Ø6(27) e sei Viti M6*10 (28) .

2, Fissare la barra della maniglia (7) ai Montanti (3) con due Viti esagonali M10*16 (21)) e due Rondelle piatte Ø10 (24) .

3. Fissare i montanti (3) al Montante di estensione della gamba verticale L/R (2L/2R) con due Manopole M10 (16) , due Lucchetti a U (13) e due Perni (14) .

ASSEMBLAGGIO



Passo 5:

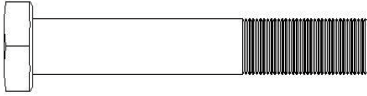
1, Cambiare la posizione del perno (14) per regolare l'angolazione del Cuscinetto dello schienale (15) .

PARTS LIST

No.	Name	Qty	No.	Name	Qty
1	Main Tube	1	17	Support Cushion	2
2L/2R	Leg Extension Upright L/R	1	18	Hex Screw M10*60	2
3	Uprights	2	19	Hex Screw M10*65	4
4	Upright Support Bar	1	20	Hex Screw M10*50	3
5	Connect Tube	1	21	Hex Screw M10*16	6
6	Backrest Adjustable Rod	1	22	Nut M10	6
7	Handle Bar	2	23	Cap Nut M8	2
8	Plate bar	2	24	Flat Washer Ø10	24
9	Front Support Tube	1	25	Arch Washer Ø8	2
10	Front Adjust Tube	1	26	Carriage BoltM8*60	2
11	Front Stabilizer	1	27	Flat Washer Ø6	6
12	Rear Stabilizer	2	28	Screw M6*10	6
13	Lock U	2	29	S13-14-15 Tool	1
14	Pin	4	30	Wrench	1
15	Backrest Pad	1	31	Hex Screw M10*70	2
16	Knob M10	2			

HARDWARE & TOOL LIST

#18 Hex Screw M10*60
2PCS



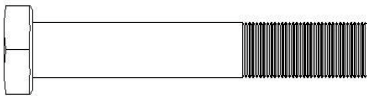
#19 Hex Screw M10*65
4PCS



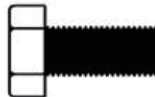
#22 Nut M10
6PCS



#20 Hex Screw M10*50
3PCS



#21 Hex Screw M10*16
6PCS



#23 Cap Nut M8
2PCS



#24 Washer Ø10
24PCS



#25 Arch Washer Ø8
2PCS



#26 Carriage Bolt M8*60
2PCS



#27 Washer Ø6
6PCS



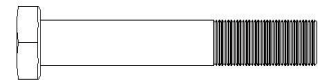
#28 Screw M6*10
6PCS



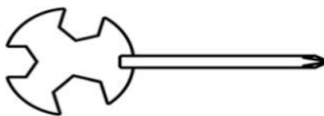
30 Wrench 13-14
1PC



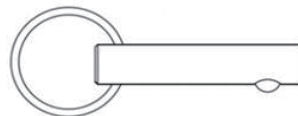
31 Hex Screw M10*70
2PCS



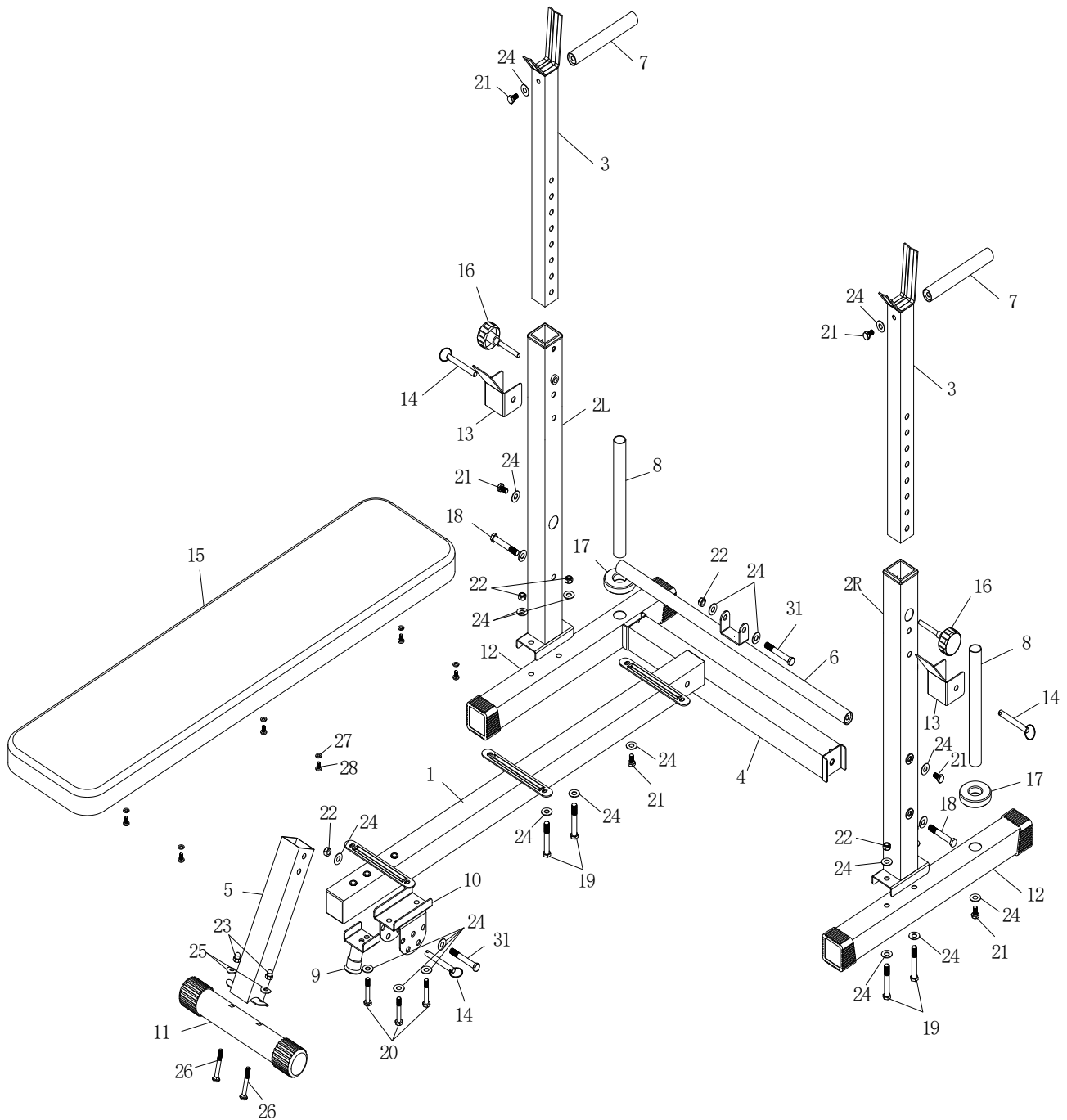
#29 S13-14-15 Tool 13-14-15
1PC



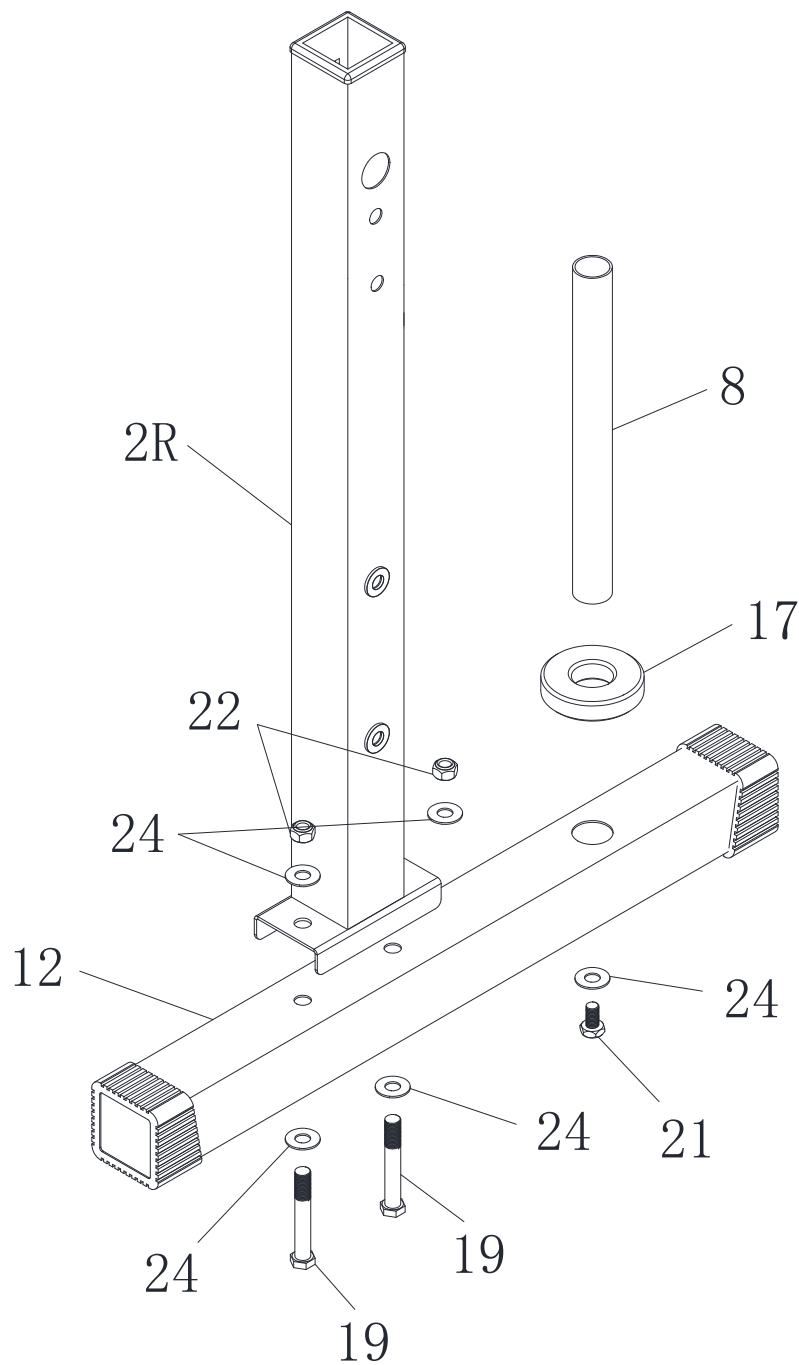
#14 Pin
4PCS



EXPLODED-VIEW ASSEMBLY DRAWING



ASSEMBLY

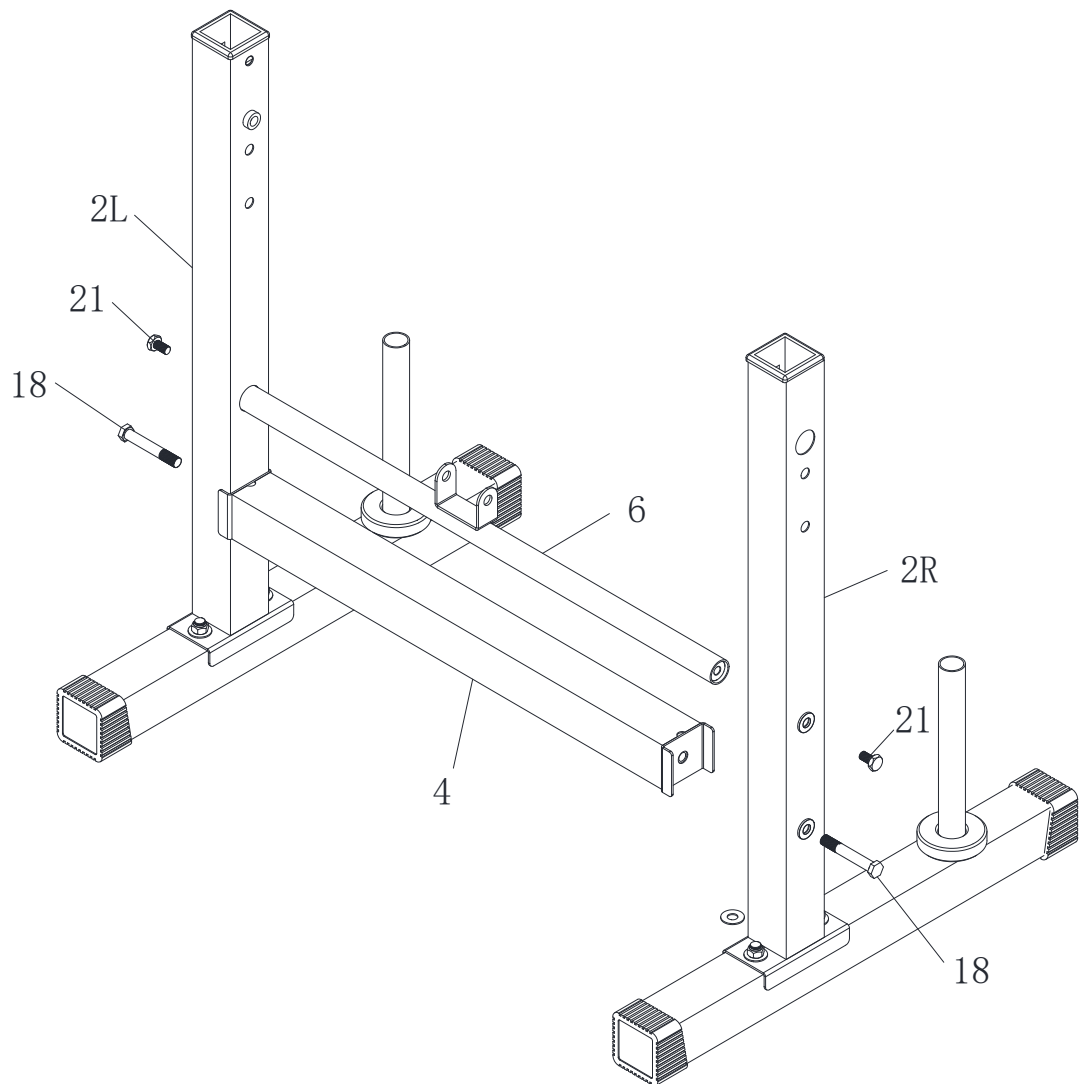


Step 1:

1, Fix Leg Extension Upright L/R (2L/2R) to Rear Stabilizer (12), and secure with four Flat Washer $\phi 10$ (24), two Nylon Nut M10 (22) and two Hex Screw M10*65 (19).

2, Fix Plate bar (8) and Support Cushion (17) to Rear Stabilizer (12) and secure with Flat Washer $\phi 10$ (24) and Hex Screw M10*16 (21).

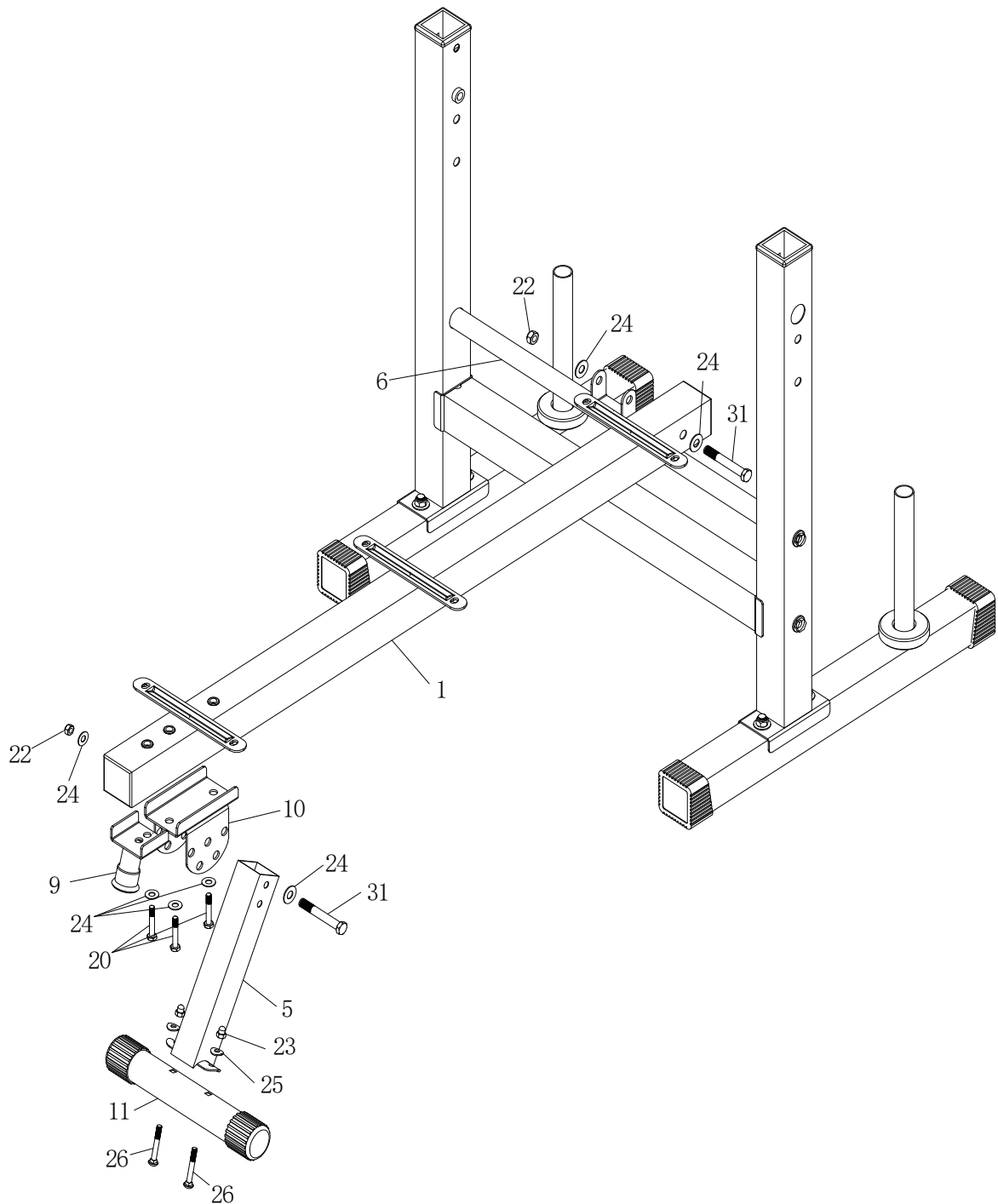
ASSEMBLY



Step 2:

1, Fix Upright Support Bar (4) and Backrest Adjustable Rod (6) to Leg Extension Upright L/R (2L/2R) and secure with two Hex Screw M10*60 (18) and two Hex Screw M10*16 (21) .

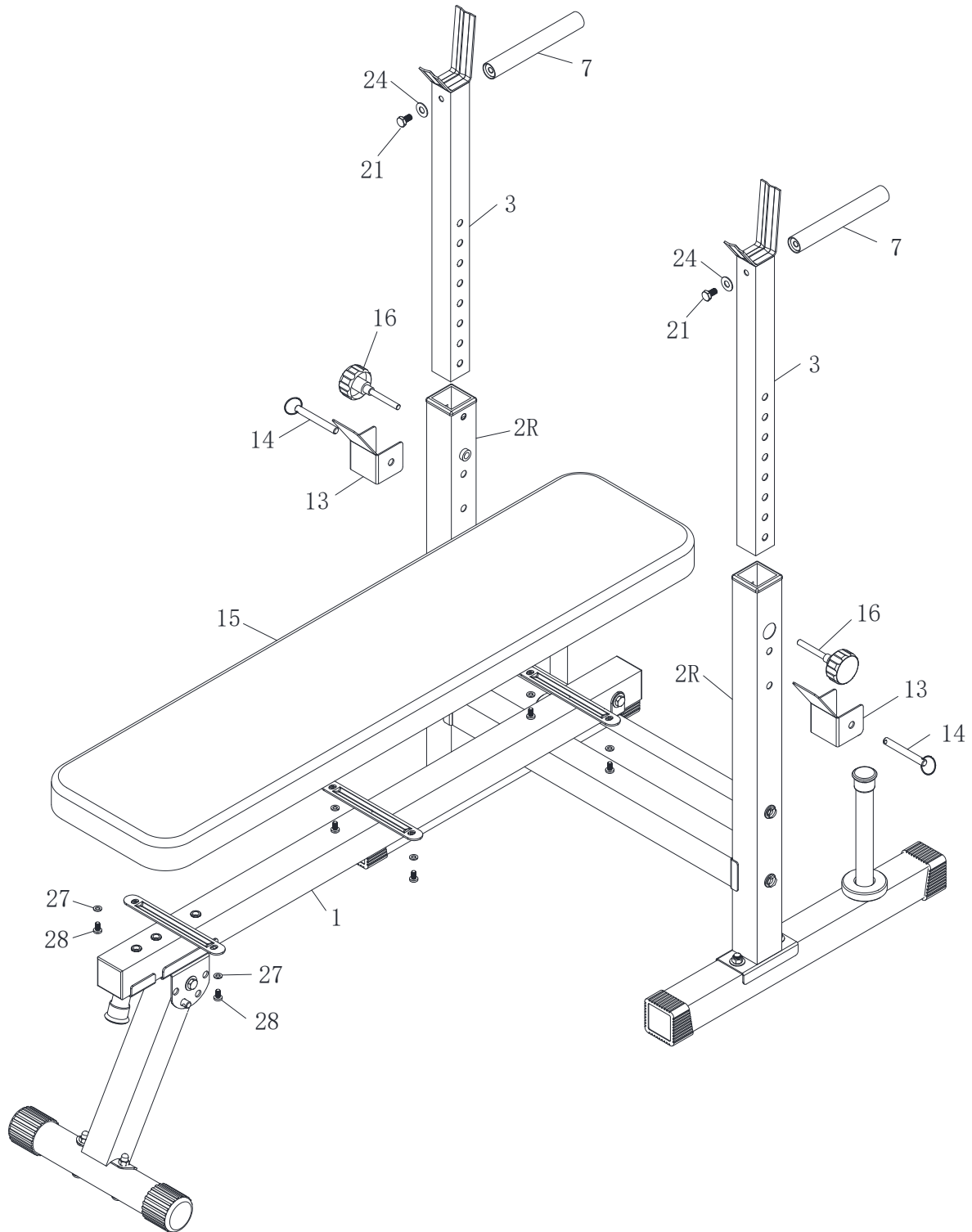
ASSEMBLY



Step 3:

- 1, Fix Front Stabilizer (11) to Connect Tube (5) and secure with two Carriage Bolt M8*60 (26), two Arch Washer $\phi 8$ (25) and two Cap Nut M8 (23).
- 2, Fix Front Support Tube (9) and Front Adjust Tube (10) to Main Tube (1) and secure with three Flat Washer $\phi 10$ (24) and three Hex Screw M10*50 (20).
- 3, Fix Connect Tube (5) to Front Adjust Tube (10) and secure with two Flat Washer $\phi 10$ (24), one Nylon Nut M10 (22) and one Hex Screw M10*65 (31).
- 4, Fix Main Tube (1) to Backrest Adjustable Rod (6) and secure with two Flat Washer $\phi 10$ (24), one Nylon Nut M10 (22) and one Hex Screw M10*70 (31).

ASSEMBLY



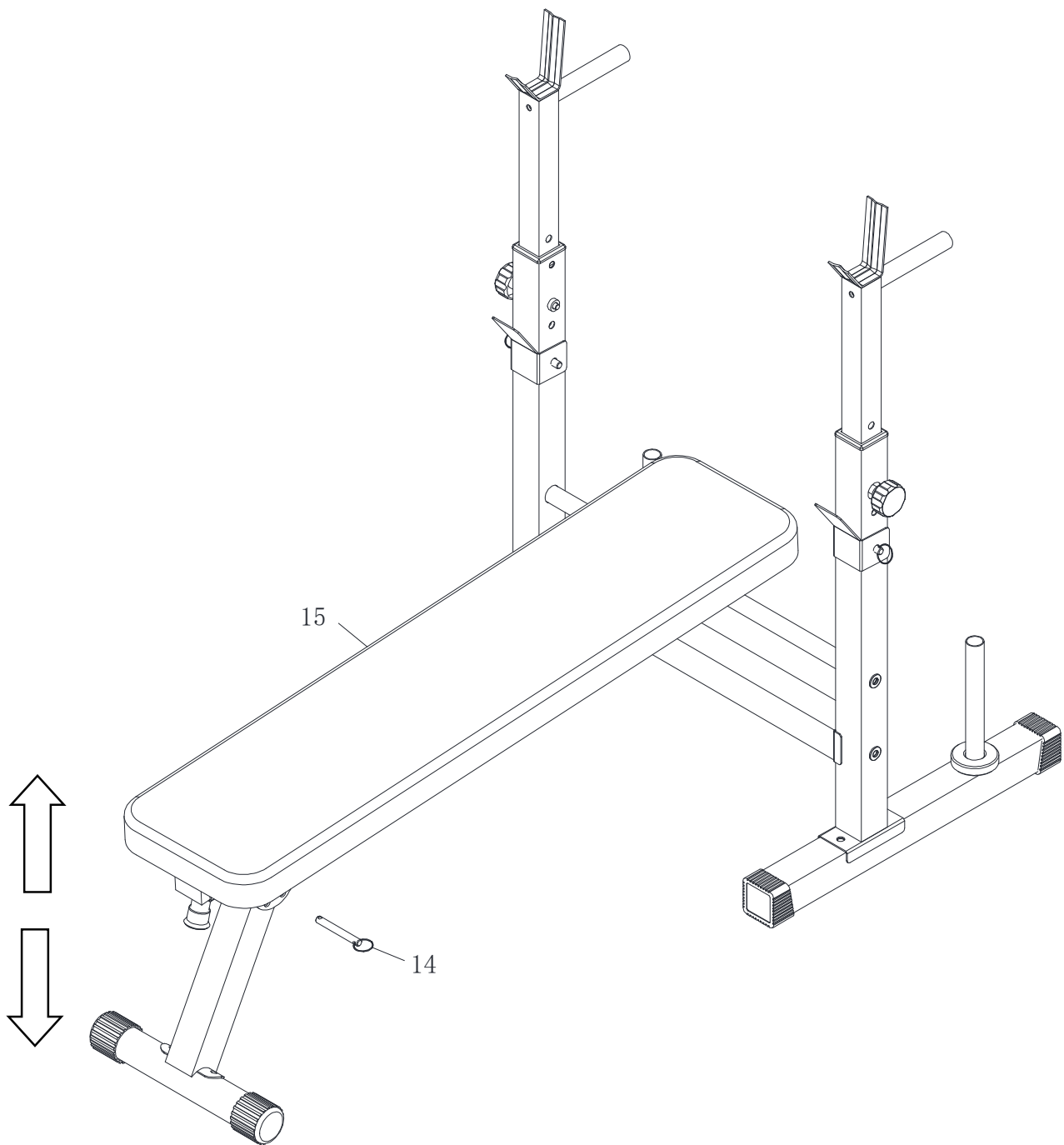
Step 4:

1,Fix Backrest Pad (15) to Main Tube (1) and secure with six Flat Washer Ø6 (27) and six Screw M6*10 (28) .

2,Fix Handle Bar (7) to Uprights (3) and secure with two Hex Screw M10*16 (21) and two Flat Washer Ø10 (24) .

3,Fix Uprights (3) to Leg Extension Upright L/R (2L/2R) and secure with two Knob M10 (16) ,two Lock U (13) and two Pin (14) .

ASSEMBLY



Step 5:

1, Change Pin (14) position to adjust the angle of Backrest Pad (15) .

