



AUTOMATIC HOSE REEL

INSTRUCTION MANUAL



845-184 845-185 845-189

Note: This manual includes important instruction for operation safety. Be sure that you have full understanding about the operation before use it.

1. INTRODUCTION

This reel is made of high—quality material and qualified spare parts, driven and released by the swirled spring, which can rewind the hose automatically.

Also there is a lock device between left cover and reel, which can control the hose length, it is pulled out or rewound. A self-layering mechanism rewinds the hose neatly to the reel. The length of hose ranges from 0 to 9M/15M/20M/25M/30M can be 180”swiveled to enlarge the cover range. If fitted with different kinds of brackets. It is convenient to be installed in any place. This auto hose reels has big flow, and high pressure. (Fig1. explosion picture of the unit; Fig2. obverse picture of the unit).

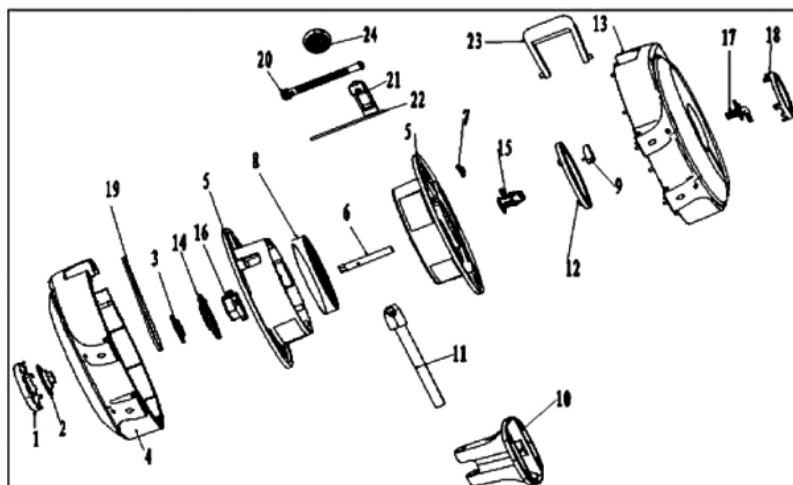


Fig2

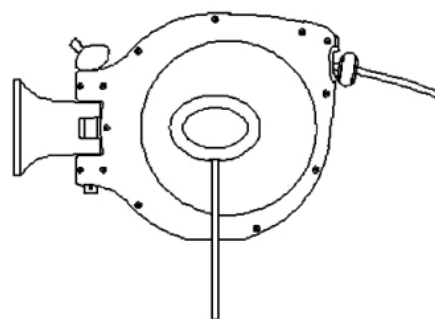


Fig1

- | | |
|-------------------------------|----------------------------|
| 1.Left side cover | 13.Right case |
| 2.Spring cover | 14.Toother drive plate |
| 3.Tooth drive plate cover | 15.plastic hose inlet A |
| 4.Left case | 16.Optional lock |
| 5.Coil wheel | 17.plastic hose inlet B |
| 6.Center shaft | 18.Right side cover |
| 7.Tension plate | 19.Belt |
| 8. Spring | 20.Toothed driving mandrel |
| 9.Orhital lock | 21.Guidance |
| 10.Mounting bracket | 22.Routating gear |
| 11. Tube for Mounting bracket | 23.Hadle bar |
| 12. Orbital disc | 24.Hose stop |

2. INSTALLATION

1. This reel is suitable for installing near source of water or air compressor. For a large area, please place it in the center of a yard or work area, and then you can enlarge its cover area freely. Also you can extend the hose to the most convenient point in this area.



Fig.3

2. Attach the inlet hose to the reel by turning the brass thread into the brass shaft; connect another tip of the source of water or air compressor in order to avoid leakage, polytetrafluoroethylene adhesive tape can be used on the screw thread of brass connector.

Please do not overturn the screw thread so as to prevent from unnecessary damage.

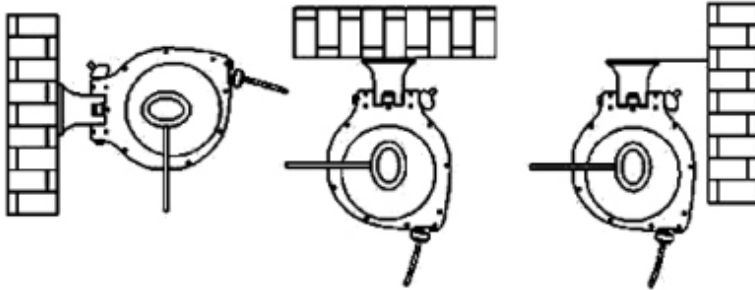


Fig.4

3. The mounting bracket can be installed to a brick wall (Fig.3). There are many alternative positions in which the unit can be placed. The key point is subject to the place where is convenient for the user.

1) The most appropriate position is to mount it on a wall or post horizontally, approximately 1 meter above the ground.

2) Otherwise, the reel can be used vertically when you hang in an overhead suitable beam or rafter (Fig.4).

3) The reel in the lower bracket pin must be fixed with a bolt or lock to ensure the safety. The mounting bracket had 4 holes, for each there is 1 M8 screw corresponds. Each screw must be with spring washer or padding (Fig.5). The four holes in two directions to center are 100mm and 78.5mm (Fig.6). What more, you can buy extra bracket to move the unit to more area while use.

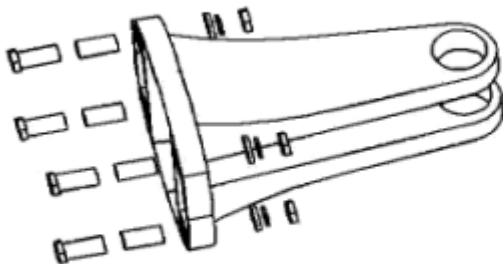


Fig.5

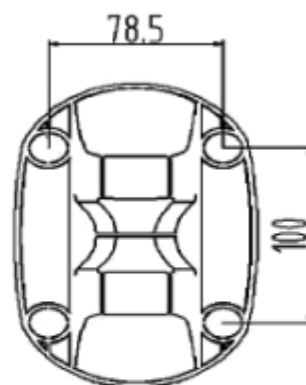


Fig.6

3. ATTENTION POINTS FOR HOSE USE

The reel has a high quality kink resistant hose supplied.

1. After using, please turn off the water or air compressor. In some areas of high temperature and high water pressure, the sunlight will heat the water hose and damage the hose, which will make the hose rewinding difficult.

2. It is the best way to turn off the water or air compressor before retracting the hose.
3. Do not leave the reel outside during very low temperature which may cause the hose less flexible and difficult to retract.
4. Do not touch any chemical substance, such as acetone lactic acid etc. Please notice the hose of the reel can't be used for drinkable water except additional indication.

4. HOW TO LATCH AND RETRACT HOSE CORRECTLY

This reel is fitted with ratchet wheel and pallet design, very easy to extend and retract the hose. When pull out the hose, you can latch the hose at any length. When you want to retract the hose , please pull out the hose about 5cm more then it will retract automatically During retraction, please hold the nozzle and follow the retraction until it finishes. When the hose twist, it is necessary to extend the hose to full length then allow retracting, so as to smooth the hose, let it evenly retract back to the reel.

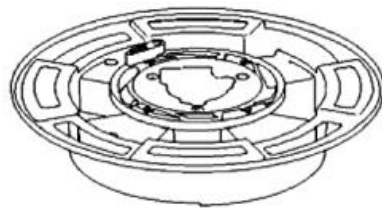


Fig. 7

5. MAINTENANCE

1. Do not immerse the reel in water to clean. If hose is very dirty, please clean it before retraction.
2. The way to mount the reel is a sheltered condition to prolong its life. The metal parts will deteriorate and rust in exposed positions. Also the polypropylene parts will be affected when exposed outside, particularly until sunlight, which will affect the life of reel housing and retracting wheel.

In the area under freezing temperatures, the hose also would be damaged if the hose is full of water.

3. When not in use, it is advisable to store you reel.

ATTENTION: Only the professional technician could operate the follow step!

4. If the hose cannot be retracted after using for a certain time, maybe it is the spring that is fatigued. So the stress of spring should be adjusted by 1-2 turns; firstly, discharge the left cover from reel, clamp the head of spring, make it away from reel; then swivel anti-clockwise the till for 1-2 turns, restore the spring head to the reel; lastly, replace the left cover.

6. TECHNICAL SPECIFICATION

MODEL	HOSE LENGTH	TYPE OF HOSE	PRESSURE	TEMPERATURE	SIZE OF INLER FITTING
XBW-D01	9+1M	8×12(5/16 ")	8 bar	-5℃~45℃	3/4 "
XBW-D02	15+1.5M	11.5×15.5(1/2 ")	8 bar	-5℃~45℃	3/4 "
XBW-D03	20+2M	11.5×15.5(1/2 ")	8 bar	-5℃~45℃	3/4 "
XBW-D04	30+2M	11.5×15.5(1/2 ")	8 bar	-5℃~45℃	3/4 "
XBA-D01	9+1M	8×12(5/16 ")	8 bar	-5℃~45℃	1/4 "
XBA-D02	15+1.5M	11.5×15.5(3/8 ")	18 bar	-5℃~45℃	1/4 "
XBA-D03	20+2M	11.5×15.5(3/8 ")	18 bar	-5℃~45℃	1/4 "
XBA-D04	30+2M	11.5×15.5(3/8 ")	18 bar	-5℃~45℃	1/4 "