



INcje021_UK

820-194V70_820-194V90



IMPORTANT, RETAIN FOR FUTURE REFERENCE: READ CAREFULLY

ASSEMBLY & INSTRUCTION MANUAL

Important Safety Instructions

Please read the instructions below carefully before installation or use of your Electric Heater and retain for future reference. Before connecting the heater to the power, please remove the two pieces of foam from the rear. You can choose to use the rear surround or not, but please do not pull or carry the heater by any edge to avoid potential injury.

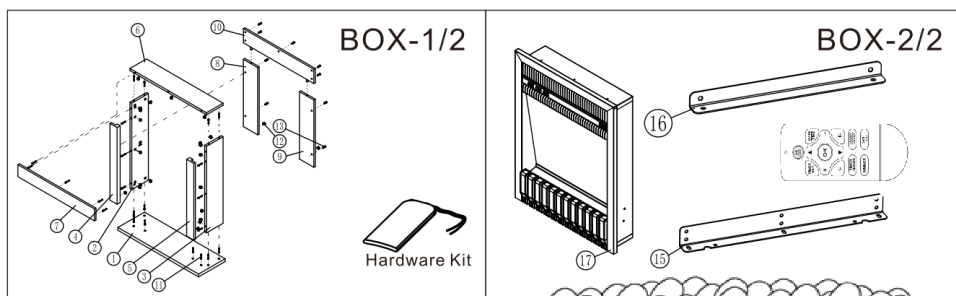
- The heater must not be located immediately below a socket outlet.
- Do not use this heater in the immediate surroundings of a bath, a shower, or a swimming pool.
- NEVER leave unsupervised children where the heater is left switched ON or is left unguarded.
- NEVER leave the heater unattended. Turn off when not used.
- NEVER touch the unit when it is in use.
- NEVER install the heater close to combustible material i.e., curtains or similar. Allow a minimum of one meter around the heater.
- NEVER route the mains cable beneath carpet.
- NEVER use aerosols or similar products close to the heater.
- NEVER use the heater to dry clothes or similar articles.
- NEVER use the heater by means of an automatic control or timer.
- The appliance MUST be disconnected from the mains supply before cleaning or maintenance.
- Warning: To avoid overheating, do not cover the heater.
- Use a suitable fireguard to protect young children who could come into contact with the heater.
- Never use an appliance if the supply cord is damaged. If the supply cord is damaged, it must be replaced by the manufacturer, its service agent, or similarly qualified persons to avoid a hazard.
- Do not use this heater with a programmer, timer or any other device that switches the heater on automatically, since a fire risk exists if the heater is covered or positioned incorrectly.
- This appliance is not intended for use by persons (including children) with reduced physical, sensory, or mental capabilities, or lack of experience and knowledge, unless they have been given supervision or instruction concerning use of the appliance by a person responsible for their safety.
- Children should be supervised to ensure that they do not play with the appliance.
- This appliance can be used by children aged from 8 years and above and persons with reduced physical, sensory or mental capabilities or lack of experience or knowledge if they have been given supervision or instruction concerning use of the appliance in a safe way and understand the hazards involved.
- Cleaning and user maintenance shall not be made by children without supervision.
- Children of less than 3 years should be kept away unless continuously supervised.
- Children aged from 3 years and less than 8 years shall only switch on/off the appliance provided that it has been placed or installed in its intended normal operating position and they have been given supervision or instruction concerning use of the appliance in a safe way and understand the hazards involved.
- Children aged from 3 years and less than 8 years shall not plug in, regulate and clean the appliance or perform user maintenance.
- WARNING: This heater is not equipped with a device to control the room temperature. Do not use this heater in small rooms when they are occupied by persons not capable of leaving the room on their own, unless constant supervision is provided.
- CAUTION: To avoid a hazard due to inadvertent resetting of the thermal cutout, this appliance must not be supplied through an external switching device, such as a timer, or connected to a circuit that is regularly switched on and off by the utility.

Unpacking the Appliance

- The Electric Heater is supplied in a single pack carton.
- All instructions should be read prior to unpacking or installing the appliance.
- Ensure all parts including loose items have been removed prior to discarding the packaging.

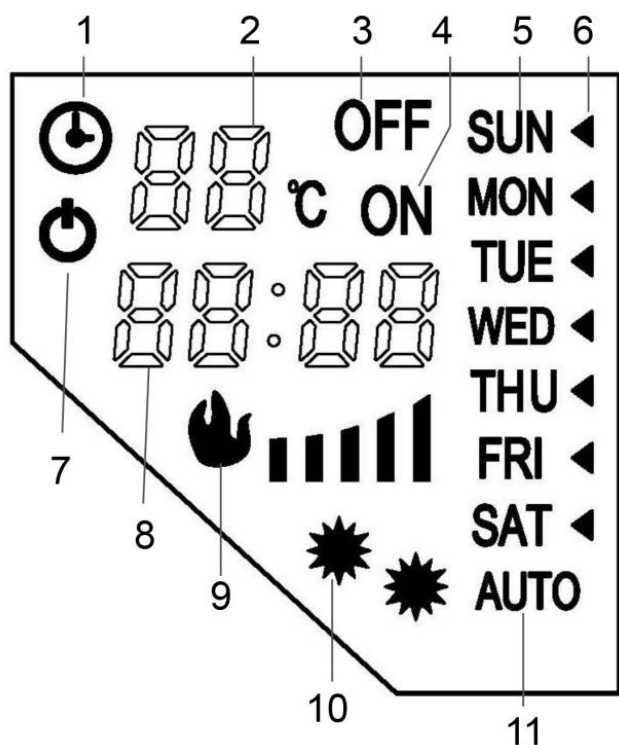
Product Checklist

- 1 piece: Electric heater
- 1 piece: Coals pack
- 1 piece: Instruction manual
- 1 piece: Remote control



Instructions for Use

The appliance can be operated either by the switches located on the top right-hand side of the fire or by the supplied remote control.



| | | | |
|----|------------------------------|----|-----------------------------------|
| 1 | Timer | 2 | Temperature/serial number display |
| 3 | Timer off | 4 | Timer on |
| 5 | Day time | 6 | Cursor |
| 7 | Standby | 8 | Time/Temperature display |
| 9 | Flame brightness | 10 | Heating position |
| 11 | Automatic control of heating | | |

Temperature and serial number display: Normally it displays the room temperature; while setting the temperature, the setting temperature is displayed; When setting the timer, serial number is displayed.


Time/ Temperature display: Normally it displays the current time; while setting the timer, the setting time is displayed. When setting the temperature of the week timer, the setting temperature is displayed.

Time on and time off: It is displayed while setting the timer, and it is used in combination with serial number setting.


Flame brightness: It displays the current brightness of the flame, which ranges from one to five positions.


Manual Operation

This is done by operating the switches located at the front of the fire. The right standby rocker switch must first be switched on, the fire will beep to indicate that it is powered up.

Press the  button once to turn on the appliance and fire effect. A red indicator light will show

to indicate that the fire is ON. Press the  button for 3 seconds this will operate the dimmer mode, hold the button down until the desired brightness is obtained.

Press the  button once for the low heat setting; press twice to switch off the heat setting.

Press the  button once for the high heat setting; press twice to switch off the heat setting.

Remote Operation

The standby rocker switch located at the front right-hand side of the fire must first be switched on; the fire will beep to indicate that it is powered up.

It takes a little time for the receiver to respond to the transmitter. Do not press the buttons more than once within two seconds for the fire to operate normally.

1. Boot steps

- 1) Connect the power
- 2) Turn on the power switch
- 3) Press the control switch or "ON/OFF" key of the remote controller to start up
- 4) Press the 1000W button once for the low heat setting; press twice to switch off the heat setting.
- 5) Press the 2000W button once for the high heat setting; press twice to switch off the heat setting.
- 6) Press the DIMMER button to operate the dimmer mode, repeat pressing will raise and lower the brightness.

2. Automatic heating

Press "IC" button on the remote controller to start or exit the automatic heating.

When turned on, the fireplace can automatically change the heating mode depending on the set temperature and the room temperature.

During a timed starting process, it is possible to start heating ahead of schedule.

3. Setting the day and time

- 1) Settings are done on the remote controller
- 2) Press "DATE TIME" button, then press the "▲" or "▼" key to select the day
- 3) Press "DATE TIME" button again, then press the "+" or "-" to set the hour
- 4) Press "DATE TIME" button again, then press the "+" or "-" to set the minute
- 5) Press "OK" button to complete

4. Temperature setting

The default set temperature is 20 °C, press "+" or "-" on the remote controller to set the temperature, which ranges from 15 to 30°C. And this setting is only for the temperature in the normally mode, not for the temperature in the timer mode.

NOTE: The set temperature must be higher than the room temperature for the heat working.

5. Timer setting

1)Description of timer setting

There are up to 10 items for timer setting.

Each setting item has its date, power-on time, and shutdown time.

The max. duration of each setting item is 23 hours 50 minutes.

The setting date for each item can be any day or days of a week.

The date in each setting item represents the date of power-on time.

If the shutdown time of the setting falls on the second day, it is unnecessary to set the date – you just set the shutdown time.

2)Steps to view the timer setting

Press the "TIMER SET" button

Press the "+" or "-" to check the power-on time of the timer one by one.

For checking the shutdown time, press the "▲" button.

Press the "+" or "-" to continue viewing.

For deleting the current item of setting, press "C" to delete

3) Steps for timer setting

(I) Select the settings of the serial number

Press the "TIMER SET" button, and the serial number starts blinking.

Press the "+" or "-" to change the serial number until you get the serial number that you need to set or modify.

(II) Select date

Press "TIMER SET" button once again, and the cursor on the left side of day starts blinking.

Press the "▲" or "▼" keys to move the cursor to the corresponding day, press the "+" to add the corresponding day, or press "-" to delete the day until you have completed the selection of all dates.

(III) Set the start time

Continue to press the "TIMER SET" button, the hour starts blinking.

Press the "+" or "-" to adjust the hour.

Continue to press the "TIMER SET" button, the minute starts blinking.

Press the "+" or "-" to adjust minute.

(IV) Set the shutdown time

Then press the "TIMER SET" button, the display is off, and the hour starts blinking.

Press the "+" or "-" to adjust the hour.

Continue to press the "TIMER SET" button, the minute starts blinking.

Press the "+" or "-" to adjust minute.

(V) Set temperature

Then press the "TIMER SET" button, and the temperature set starts blinking. At this moment, the temperature displayed is normally set temperature, which can be adjusted by pressing "+" or "-"

(VI) Press "TIMER SET" button to continue setting, and press "OK" complete the setting

6. Timer switch

"TIMER ON/OFF" is to control the timed opening and closing.

Restart the machine after power is cut off, the original setting is kept, but the current date and time must be reset.

Note 1: When the week timer is power on, you should turn on the heating function, or else when the machine is working again, there will be only the flame effect working.

NOTE 2: Repeat the same procedures to set more timing cycles if required after the 01-timing cycle is finished.

NOTE 3: When the week timer setting is finished, "TIMER ON/OFF" function can be effective.

Safety Cut-Off

This appliance is fitted with a safety cut-off which will operate if the fire overheats (e.g., due to blocked air vents). For safety reasons, the fire will NOT automatically reset.

To reset the appliance, disconnect the appliance from the mains supply for at least 15 minutes.

Reconnect to the mains supply and switch on the appliance.

Troubleshooting

| Symptom | Solution |
|-----------------------|--|
| No operation/ no fan. | Check if put the electric plug into the socket. Check for safety cut-off operation. |
| No fire effect light. | Check the LED system by qualified electrician |

Cleaning and Maintenance

Warning- Always disconnect from the mains supply before cleaning heater.

For general cleaning use a soft, clean duster - never use harsh abrasive or cleaners.

The glass viewing screen should be cleaned carefully with a soft cloth. DO NOT use proprietary glass cleaners.

This product does not use a standard bulb for its flame effect. The appliance uses an electronically controlled LED system to create the effect, therefore no parts need to be replaced. There are no user-serviceable parts on this appliance. Under no circumstances should the appliance be serviced by anyone other than a qualified electrician.

Disposal

At the end of the product's serviceable life, it should be disposed of thoughtfully and safely in accordance with local authority regulations. The plug should be Removed from the power supply cord and the power cord cut from the heater.

Technical Specification

Supply: 220-240V~ 50Hz

Rated power: 2000W

Lighting: LED bulbs (no replaceable parts)



Meaning of crossed –out wheeled dustbin:

Do not dispose of electrical appliances as unsorted municipal waste, use separate collection facilities.

Contact your local government for information regarding the collection systems available.

If electrical appliances are disposed of in landfills or dumps, hazardous substances can leak into the groundwater and get into the food chain, damaging your health and well-being.

Information requirements for electric local space heaters

Model identifier(s): **NDY-19G**

| Item | Symbol | Value | Unit | Item | Unit |
|--|-------------|-------|------|---|-------|
| Heat output | | | | Type of heat input, for electric storage local space heaters only (select one) | |
| Nominal heat output | P_{nom} | 2.0 | kW | manual heat charge control, with integrated thermostat | N/A |
| Minimum heat output (indicative) | P_{min} | 1.0 | kW | manual heat charge control with room and/or outdoor temperature feedback | N/A |
| Maximum continuous heat output | $P_{max,c}$ | 2.0 | kW | electronic heat charge control with room and/or outdoor temperature feedback | N/A |
| Auxiliary electricity consumption | | | | fan assisted heat output | N/A |
| At nominal heat output | eI_{max} | 0.014 | kW | Type of heat output/room temperature control (select one) | |
| At minimum heat output | eI_{min} | 0.014 | kW | single stage heat output and no room temperature control | [no] |
| In standby mode | eI_{sb} | 0.48 | W | Two or more manual stages, no room temperature control | [no] |
| | | | | with mechanic thermostat room temperature control | [no] |
| | | | | with electronic room temperature control | [no] |
| | | | | electronic room temperature control plus day timer | [no] |
| | | | | electronic room temperature control plus week timer | [yes] |
| | | | | Other control options (multiple selections possible) | |
| | | | | room temperature control, with presence detection | [no] |
| | | | | room temperature control, with open window detection | [no] |

| | | | |
|-----------------|---|------------------------------|-------|
| | | with distance control option | [no] |
| | | with adaptive start control | [yes] |
| | | with working time limitation | [no] |
| | | with black bulb sensor | [no] |
| Contact details | Ningbo City Gengxin Appliance Industry Co., Ltd. Xinpu Town, Cixi, Zhejiang 315322, P.R. China | | |

Installation

The Electric heater is supplied with approximately 1.7 meters of flexible mains cable (1mm²). The appliance and surround should be located close to a suitable mains socket and MUST be easily accessible to allow proper connection.

This heater MUST be earthed. If in any doubt consult the manufacturer, its service center, or a qualified person.

The installation is as follow:



001-877-644-9366
customerservice@aosom.com



001-855-537-6088
customerservice@aosom.ca



0044-800-240-4004
enquiries@mhstar.co.uk



0049-(0)40-88307530
service@aosom.de



0033-1-84166106
contact@aosom.fr



0034-931294512
atencioncliente@aosom.es



0039-0249471447
clienti@aosom.it