







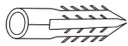
831-155



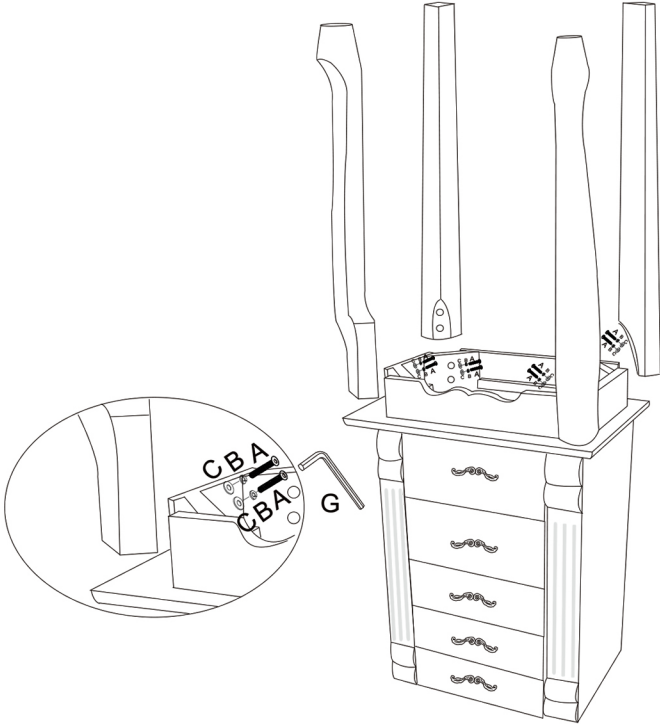
Please read these instructions and warranty information carefully before use and keep them properly for future reference.

OPERATING INSTRUCTIONS

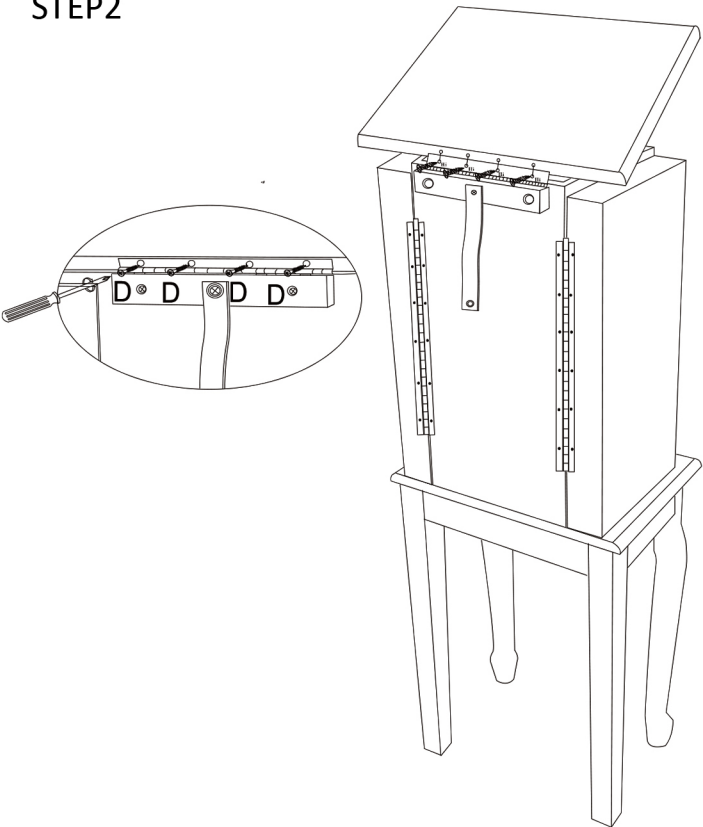
Assembly Instructions

A=8PCS \varnothing 6x40mm 	B=8PCS 	C=8PCS 	G=1PC 
D=4PCS \varnothing 2.5x12mm 	E=1PC \varnothing 3.5x25mm 	F=1PC \varnothing 5/32" X1" 	

STEP1



STEP2



STEP3

