

# TOWEL WARMER

ITEM NO: **850-058**

Model No: **BK-109-T5**



## **Instruction manual:**

This towel warmer is intended for the use in bathrooms or laundry areas.

Read the instructions carefully before operating

## **Specification**

Voltage: AC120V

Frequency: 60Hz

Rated power: 130W

Unit size: 900\*530\*310mm

## **OPERATING INSTRUCTION**

1. Please read the wall-mounted installation carefully to understand how to install on your ideal location of the wall.
2. Make sure to complete the installation.
3. Plug the power cord into an electrical outlet.
4. Power on/off switch:
  - a. Connect to the suitable power, press the switch at (1) position, the power indicator will light up and the heater will operate.
  - b. Press the switch at (o) position, the power indicator is off and this heater will not operate.

## **Maintenance**

If the supply cord is damaged, it must be replaced by the manufacturer, its service agent or similarly qualified persons in order to avoid hazard.

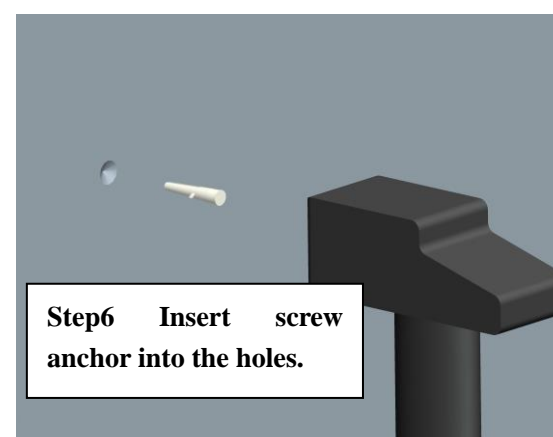
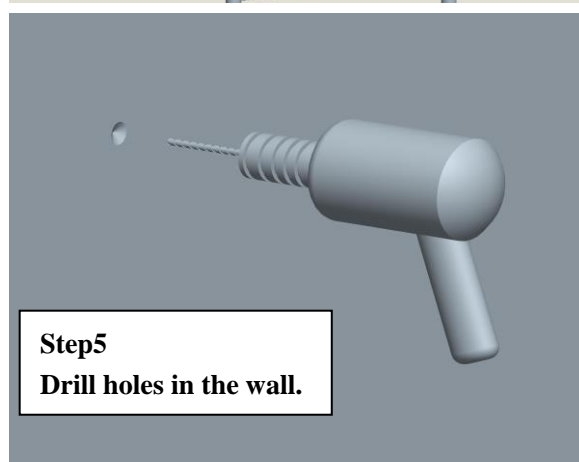
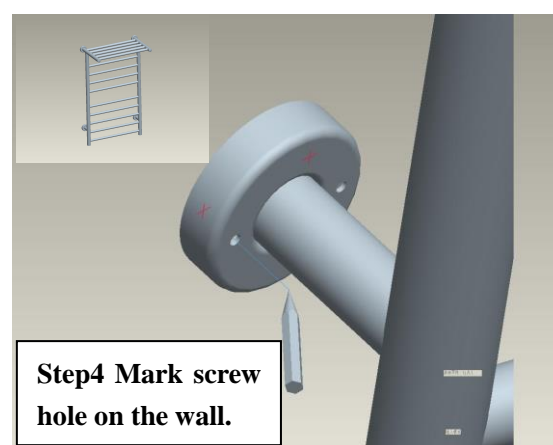
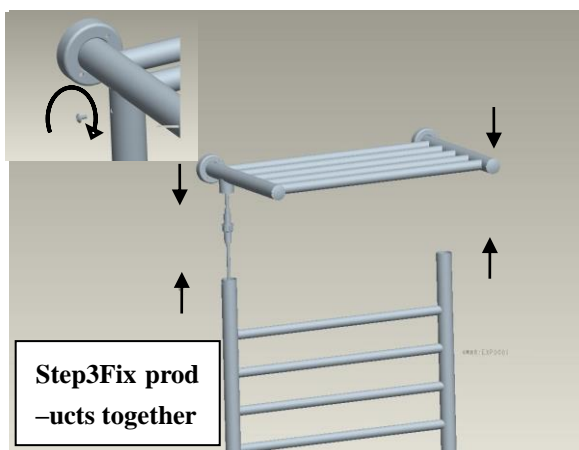
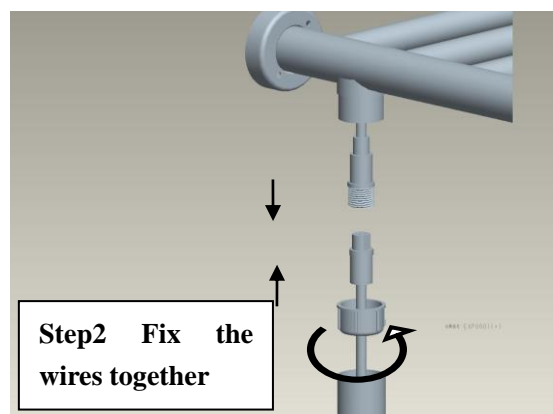
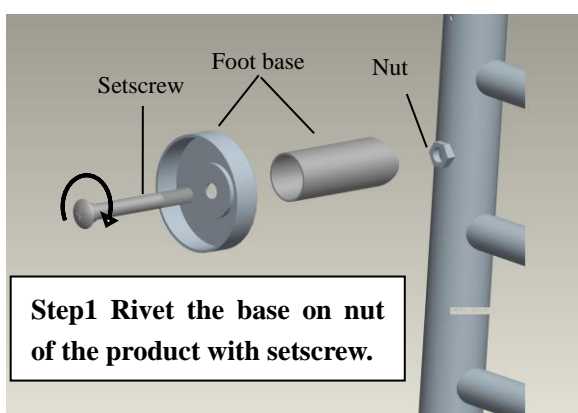
# WARNING

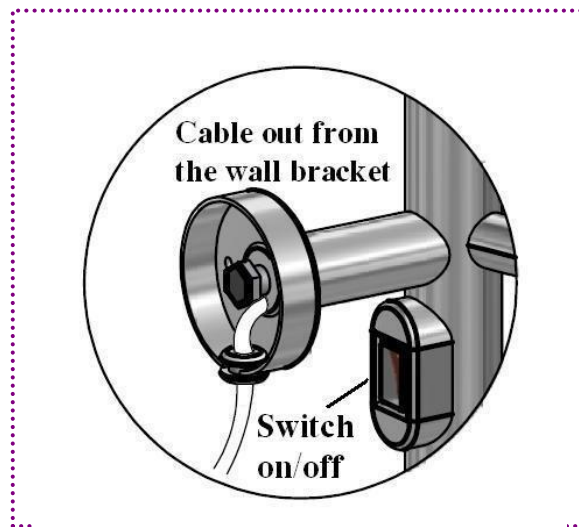
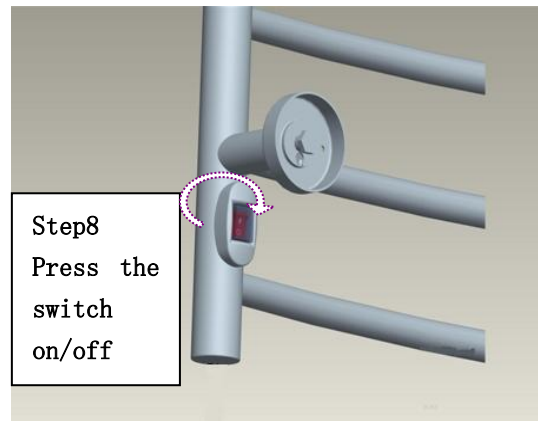
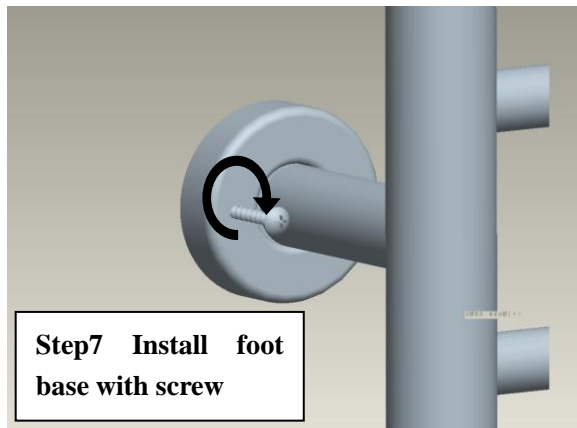
**This appliance is intended only for drying textiles washed in water.**

THE TOWEL AND CLOTH WARMER IS ONLY ALLOWED TO BE INSTALLED AT A DISTANCE OF AT LEAST 0.6M FROM BATH TUBES SHOWERS.

- In order to avoid a hazard for very young children, this appliance should be installed so that the lowest heated rail is at least 600 mm above the floor.
- The towel rail is to be installed so that switches and other controls cannot be touched by a person in the bath or shower.

## WALL-MOUNT INSTALLATION INSTRUCTION





## IMPOTANT SAFEGUARDS

1. Read all instructions before using this heater.
2. Extreme caution is necessary when towel warmer is used by or near children or invalids and whenever the heater is left operating and unattended.
3. Always unplug heater when hot in use.
4. Do not operate any heater with a damaged cord or plug or after the heater malfunctions, has been dropped or damaged in any manner .Return heater to authorized service facility for examination, electrical or mechanical adjustment, or repair.
5. Do not use outdoors.
6. Never locate heater where it may fall into a bathtub or other water containers.
7. Does not run cord under carpeting. Do not cover cord with throw rugs, runners, or the like? Arrange cord away from traffic area and where it will not be tripped over.
8. To disconnect heater, remove plug from outlet.
9. Do not insert or allow foreign objects to enter any ventilation or exhaust opening as this may cause an electric shock, fire or damage the heater.
10. Do not use it in area where gasoline, paints, or flammable liquids.
11. Use this heater only as described in this manual .Any other use not recommended by the manufacture may cause fire, electric shock, or injury to persons.
12. Keep these instructions for your late reference.

## **CAUTION:**

- THIS HEATER ONLY OPERATES IN UPRIGHT POSITION .**
- STORE THE HEATER IN COOL DRY LOCATION WHEN NOT IN USE .**
- DO NOT STORE UNTIL THE HEATER HAS COOLED DOWN .**

## **WARNING:**

- ANY OTHER SERVICING SHOULD BE PERFORMED BY AN AUTHORIZED SERVICE REPRESENTATIVE .**
- THE HEATER MUST NOT BE LOCATED IMMEDIATELY BELOW A SOCKET-OUTLET**
- IN ORDER TO AVOID A HAZARD FOR VERY YOUNG CHILDREN,THIS APPLIANCE SHOULD BE INSTALLED SO THAT THE LOWEST HEATED RAIL IS AT LEAST 600 MM ABOVE THE FLOOR.**
- THE TOWEL RAIL IS TO BE INSTALLED SO THAT SWITCHES AND OTHER CONTROLS CANNOT BE TOUCHED BY A PERSON IN THE BATH OR SHOWER.**

This appliance can be used by children aged from 8 years and above and persons with reduced physical, sensory or mental capabilities or lack of experience and knowledge, if they have been given supervision or instruction concerning use of the appliance in a safe way and understand the hazards involved. Children shall not play with the appliance. Cleaning and user maintenance shall not be made by children without supervision.