



INcsa008_US

853-023

STEAM MOP

USER MANUAL



IMPORTANT, RETAIN FOR FUTURE REFERENCE: READ CAREFULLY

ASSEMBLY & INSTRUCTION MANUAL

TABLE OF CONTENTS

IMPORTANT SAFEGUARDS	1
PARTS DESCRIPTION	3
FEATURES	4
USE	5
ACCESSORY LIST	6
TO USE AS A STEAM MOP	7
TO USE AS A HANDHELD STEAM CLEANER	8
CLEANING AND STORAGE	9
TECHNICAL INFORMATION	9
DISPOSAL	10

IMPORTANT SAFEGUARDS



To reduce the risk of fire, injury or electrical shock along with extending the life of your appliance, please read and follow all of the information in this manual before using and save it for future reference.

- Before connecting the appliance with the power source, check that voltage indicated on the rating label corresponds the mains voltage in your home.
- The appliance must be used only for its intended purpose. Incorrect operation and improper use can damage the appliance and cause injury to the user. The manufacturer and seller assume no responsibility for any damage caused by incorrect use or improper handling.
- This appliance can be used by persons with reduced physical, sensory or mental capabilities or lack of experience and knowledge if they have been given supervision or instruction concerning use of the appliance in a safe way and if they understand the hazards involved.
- This appliance shall not be used by children. Cleaning and maintenance must not be carried out by children. Keep the appliance out of reach of children when it is operating or cooling down. Close supervision is necessary when the appliance is used near children.
- This device is not a toy, do not let small children to play with. In order to ensure your children 's safety, please keep all packaging materials out of their reach. Do not allow small children to play with the foil. There is a danger of suffocation.
- The appliance shall not be left unattended while it is plugged into the outlet.
- The appliance must not be used if it malfunctions, there are visible signs of damage, or if it is leaking.
- Never wind the cord around the appliance. Do not to tug, pull, or bend the cord. Regularly check cords for any sign of exterior damage including cracks, nicks, cuts, or frays.
- Never use the appliance if cord or appliance shows any signs of damage. Do not attempt to repair or modify the appliance in anyway.
- Never immerse the appliance in water or any other liquid for any reason whatsoever. Never place it into the dishwasher. Never use this appliance near spray fountain. Never use this appliance with wet hands. Make sure the power cord and plug never comes into contact with water or other liquids. If the appliance is wet, immediately unplug the appliance from the outlet and wipe dry.
- Do not use the appliance near hot surfaces or in contact with flammable materials. Ensure that the power cord does not come into contact with hot parts of this appliance.

- Unplug the appliance from the electrical outlet before replacing any accessory parts, cleaning, refilling the water tank, or when it is not in use.
- Never use the appliance outdoors and always place it in a dry environment.
- Never use accessories which are not recommended by the producer. They could constitute a danger to the user and risk to damage the appliance.
- Make sure the cord cannot get caught in any way to avoid the chance of tripping over or becoming entangled in the cord.
- Make sure the appliance has cooled down before cleaning and storage.
- The temperature of accessible surfaces is high when the appliance is operating. Never touch these parts to avoid scalding.
- This appliance is not intended to be operated by means of an external timer or separate remote-control system.
- The appliance must be used and rested on a flat and stable surface. Do not cover the device with anything.
- If a longer detachable power-supply cord or extension cord is used, the marked electrical rating of the cord set or extension cord should be at least as great as the electrical rating of the appliance.
- This appliance is intended for household use only.



**Always follow basic safety precautions
when using any electrical products,
especially when children are present.**



WARNING: DANGER OF SCALDING!

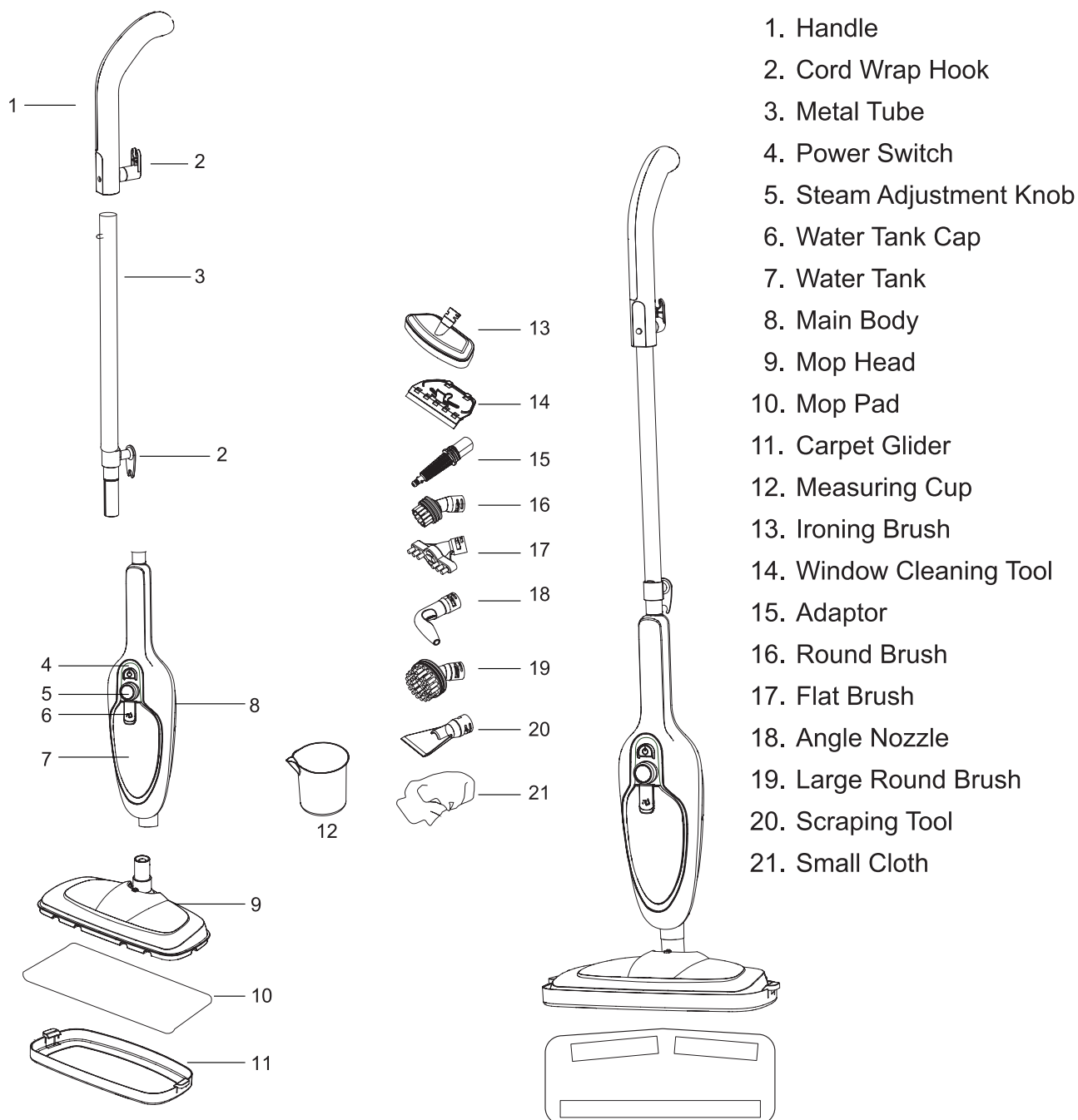
Beware of steam when operating the unit. The steam is hot and may cause severe burns if it comes in contact with bare skin.

Never run the steam mop without water.

Never direct steam at any person or animal.

FOR HOUSEHOLD USE ONLY
SAVE INSTRUCTIONS FOR FUTURE REFERENCE

PARTS DESCRIPTION



FEATURES

Using Steam Mop to clean your home in an easy, relaxed and environmentally friendly manner.

Purely physical cleaning

Steam is used to completely clean and sanitizes floors or carpets without any chemicals. The steam temperature will reach approximately 190-230°F, particularly useful for cleaning bathroom, shower, pet sleeping area or garbage can.

Easy housework

Ideal for easily removing hard-to-remove stains, dirt or grime from floors or carpets. Household cleaning becomes less onerous and tedious.

Tap water

Designed for use with plain tap water to generate steam. Distilled or purified water is recommended for use only in hard water areas.

Reusable cloths

Comes with reusable, highly absorbent microfiber cloths that can be machine-washed in hot water and tumble dried.

Use on carpet and rugs

Designed for use with the supplied carpet glider on carpet and rugs that will withstand high heat.

Use on hard floors

Designed for use on hard surfaces that withstand high heat, including ceramic tiles, marble, stone or linoleum floors and on sealed hardwood or parquet floor.

IPX4 Water Resistance

Resistant to water splashes from any direction.

USE

- Carefully unpack the steam mop and remove all packaging materials. Save the box and packing materials for later storage.
- Clean the appliance according to the instructions in CLEANING AND MAINTENANCE section.
- Place the appliance on a flat and stable surface to avoid overturning.
- This appliance can be used as a Steam Mop and Handheld Steam Cleaner. Assemble all the parts correctly, as illustrated in the following paragraphs, to meet your needs.
- Untie the power cord completely.
- Open the water tank cap, and fill with 300ml water to the full capacity of the tank. Close the water tank with the cap.
- Before connecting the appliance with the power source, check that voltage indicated on the rating label corresponds the mains voltage in your home.
- Press the power switch to turn on the appliance, the indicator light will illuminate red, and the appliance will start heating. Wait for a short while until the red turns to green, steam is ready for use. Turn the steam adjustment knob to control the steam quantity.
- When the water level in the water tank is low, turn off the power switch immediately. Unplug the appliance from the electrical outlet and refill the water tank.

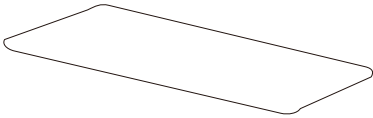
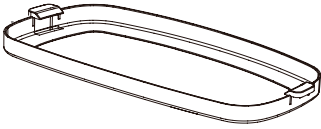


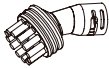
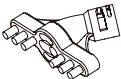
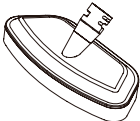
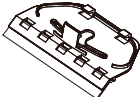

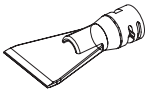
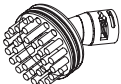
NOTE:

- If you use steam mop for a long time, the cloth sleeve may become very dirty. It needs to be washed.
- Turn off and unplug the appliance, and allow to cool thoroughly before tear the cloth off the mop head.

CAUTION:

- Do not use the steam mop without the cloth sleeve attached to the mop head.
- Do not use the appliance without water in the water tank.
- Do not use any detergents in the water tank. Only water should be used.
- Do not insert any objects into the openings. Do not block any opening when using the appliance.
- Never direct the appliance towards people, animals or plants, or equipment containing electrical components such as the interior of ovens.

ACCESSORY LIST

Accessory	Picture	Suggested Use
Mop Pad		For general cleaning of hard floors/marbles/refreshing carpets.
Carpet Glider		For cleaning carpets.
Accessory Adaptor		For connecting other accessories with the main body, and for cleaning areas that are hard to reach, such as sink, gas stove, faucet, microwave oven, range hood, etc.
Angle Nozzle		For cleaning areas that are hard to reach, such as sink, gas stove, faucet, microwave oven, range hood, edge, corner etc.
Round Brush		For cleaning ovens, microwaves, showers. bathtubs, faucet fixtures, tiles, toys, refrigerators, etc.
Flat Brush		For cleaning ovens, microwaves, showers. bathtubs, faucet fixtures, tiles, toys, refrigerators, etc.
Ironing Brush		For cleaning shower glass, doors, mirrors, glass; removing scum, grime; ironing garment, etc.
Window Cleaning Tool		For cleaning shower glass, doors, mirrors glass, etc.
Small Cloth		For garment cleaning or soft surface cleaning etc.
Scraping Tool		For scraping grease, residue or other substances from surfaces such as stove tops and ovens.
Large Round Brush		For cleaning ovens, microwaves, showers, bathtubs, faucet fixtures, tiles, toys, refrigerators, etc.

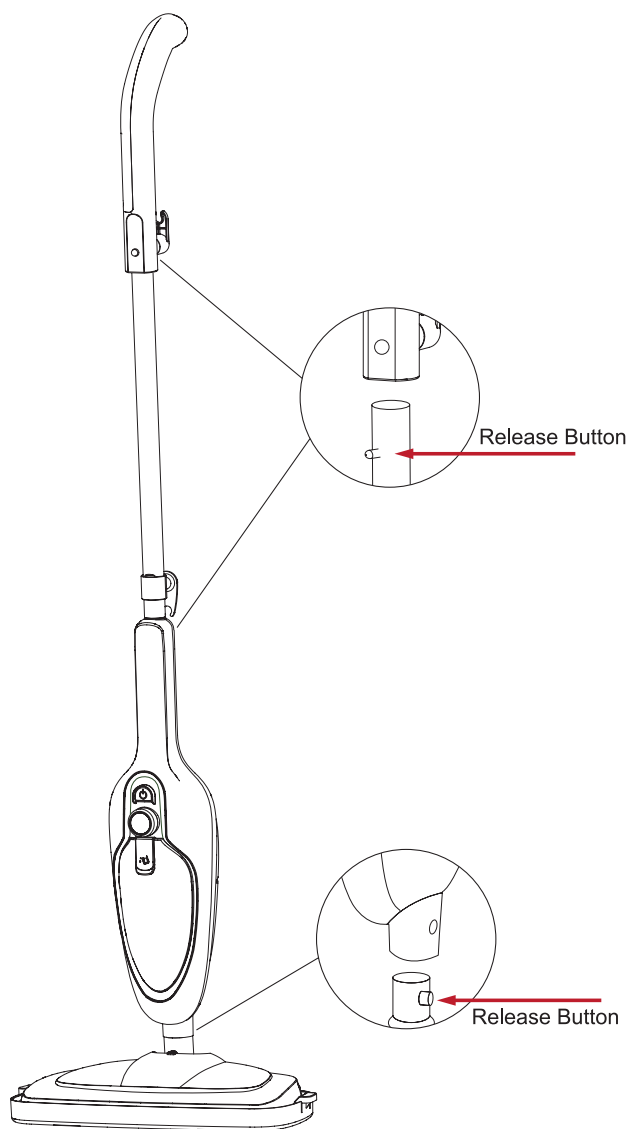
TO USE AS A STEAM MOP

1. Before assembling the steam mop, make sure the power switch is in "OFF" position, and the appliance is not connected with the electrical outlet.
2. Connect the parts in the sequence as shown in PARTS DESCRIPTION section. Always align the Release Button on the metal tube and mop head with the openings on the main body and handle so as to correctly connect the parts together.
3. Attach the mop pad on the mop head. Install the carpet glider on the mop head when using on carpets. Do not use the mop without the mop pad.
4. Before start steam cleaning, the floor has been swept or vacuumed.

CAUTION:

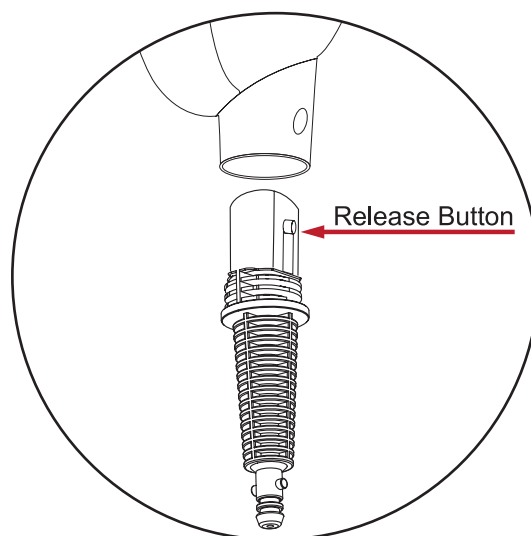
- Do not use the steam mop on unsealed wood floors.
- Do not let the steam mop stand on any wood floor for an extended period of time. This could cause the wood grain to expand. Test an isolated small area of the surface to be cleaned before using on the whole area.
- Take extra care when using the steam mop on surfaces that have been treated with wax, as the heat and steam may remove the wax or the sheen.
- Take extra care when using the steam mop on vinyl, linoleum or any other heat-sensitive floors, as too much heat can melt the glue on the floor.

We recommend cleaning a small area first in an inconspicuous area of the floor and checking the floor manufacturer's use and care instructions for the surface to ensure suitability for steam cleaning.



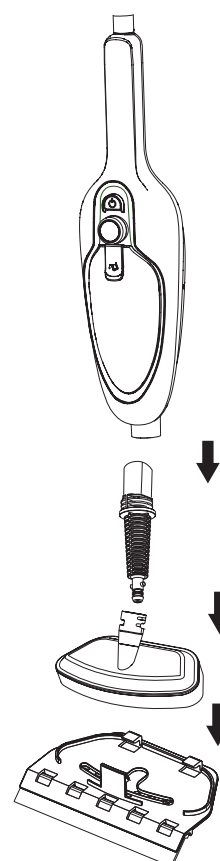
TO USE AS A HANDHELD STEAM CLEANER

1. Before assembling the handheld steam cleaner, make sure the power switch is in "OFF" position, and the appliance is not connected with the electrical outlet.
2. Remove the handle from the main body.
3. Choose the appropriate accessory as shown in the Accessory List. Connect the accessory with the adaptor by inserting the tip of adaptor into the opening of the accessory and turning the adaptor clockwise to lock into place.
4. Align the Release Button on the accessory adaptor with the opening on the main body and insert the adaptor into the opening on the main body.



NOTE:

- To remove accessory adaptor from the main body, press Release Button on the accessory adaptor.
- When using the window cleaning tool, ironing brush is used to link the adaptor with it.



CLEANING AND STORAGE

- Always switch off the appliance, disconnect the appliance from the power source, and let it cool thoroughly before cleaning.
- Wipe the exterior of the appliance with damp cloth.
- The accessories can be washed in water with mild detergent.
- Never immerse the appliance in water or any other liquids.
- Never use abrasive cleansers, scouring pads, metal brushes, as they may damage the surface.
- Ensure the appliance is completely cool and dry before storage.
- Do not wrap the cord around the appliance, as this will damage the cord.
- Keep the appliance in a cool, dry place.

TECHNICAL INFORMATION

Product	Steam Mop
Rated Voltage	110-120V 50 / 60Hz
Material	ABS / PP / PA
Water Tank Capacity	300 ml / 10 fl oz
Steam Generation Delay Time	25-30 seconds
Rated Power	1100-1200W
Cord Length	20 ft
Product Dimensions	13.2 x 6.3 x 44.7 inches
Package Dimensions	8.7 x 7.3 x 19.3 inches
Net Weight	3.7 lbs
Gross Weight	5.5 lbs

DISPOSAL



When the appliance has reached the end of its life, please be responsible with its disposal. This and other electrical appliances contain valuable material and can be dangerous to the environment if not disposed of properly. We ask that you follow the rules and regulations of your town as far as disposing of electric appliances. Please endeavor to take the appliance to an authorized recycling facility near you.