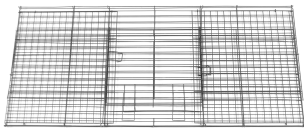




Assembly Instructions

SMALL ANIMAL HOME

Sku # D51-112



Wire Panel #901454



Plastic Base #901455



Plastic Ramp #900742



Plastic Shelf #900743



Food Bowl #900745



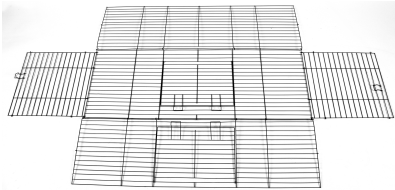
16 oz. Water Bottle #900746



4 Casters

2 Locking Casters

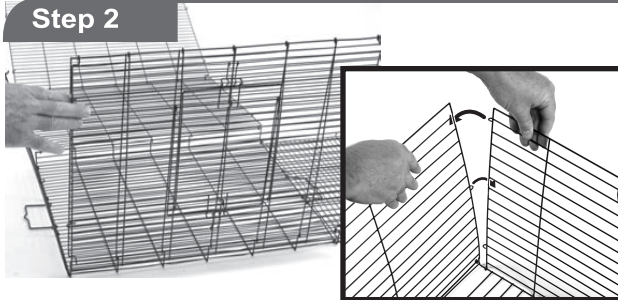
Step 1



Carefully unfold the front, back and side panels.

TIP: If any panels have become stuck together, separate them by carefully moving the panels side to side to free them.

Step 2

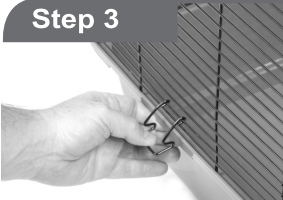


Connect the front cage panel (includes doorway) to the left side panel as shown. The "J" shaped wire hooks are specially designed to hook onto the side panel alternating the connection back and forth. Then the front panel and the side panel again to create a woven connection joint.

Repeat this connection between the remaining panels in each corner using the alternating "J" shaped hook.

HINT: Start by attaching bottom "J" hook and move up and attach top "J" hook last

Step 3



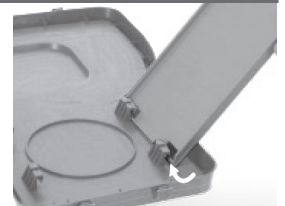
Turn base upside down. Insert 4 Caster Wheels and 2 Locking Wheels.



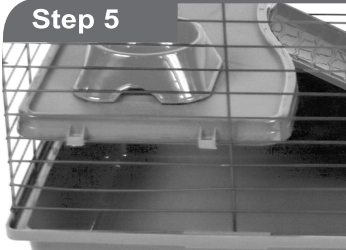
Place the assembled wire top onto the base making sure the wire panels rest securely along the top edge of the base. Secure the top panels to the base using the 2 wire latches located on each side.

Step 4

Attach the plastic ramp to the bottom side of the plastic shelf by snapping it into the clips.



Step 5



Place the assembled shelf and ramp in the cage through the door. Attach the shelf to the 5th wire up from the bottom on the left side of the cage.

Step 6

Position the water bottle on the outside of the cage with the metal sipper tube inserting into the cage at a level easily accessible for your pet. Wrap the hanger around the bottle and attach the wire clips to the cage. Place the food bowl on the raised portion of the shelf.



CARE TIP:

Your pet needs a constant supply of food and water as well as occasional treats. Provide your pet with fresh water and food daily. When re-filling the water bottle, remove from hanger and unscrew cap. Be sure to fill completely with cool clean water and replace the cap. (a few initial drips are normal while the vacuum forms so the bottle will perform properly).

US



001-877-644-9366
customerservice@aosom.com

CA



001-855-537-6088
customerservice@aosom.ca

UK



0044-800-240-4004
enquiries@mhstar.co.uk

DE



0049-(0)40-88307530
service@aosom.de

FR



0033-1-84166106
contact@aosom.fr

ES



0034-931294512
atencioncliente@aosom.es

IT



0039-0249471447
clienti@aosom.it