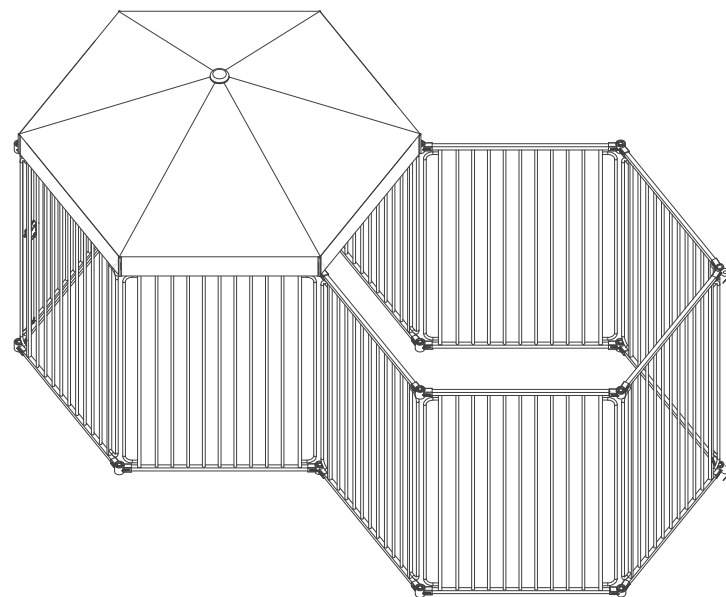




INdka006_US_D02-064

Pet Play Yard



READ ALL INSTRUCTIONS BEFORE ASSEMBLY
AND USE OF PLAY YARD.
KEEP INSTRUCTIONS FOR FUTURE USE.

BEFORE USING PRODUCT

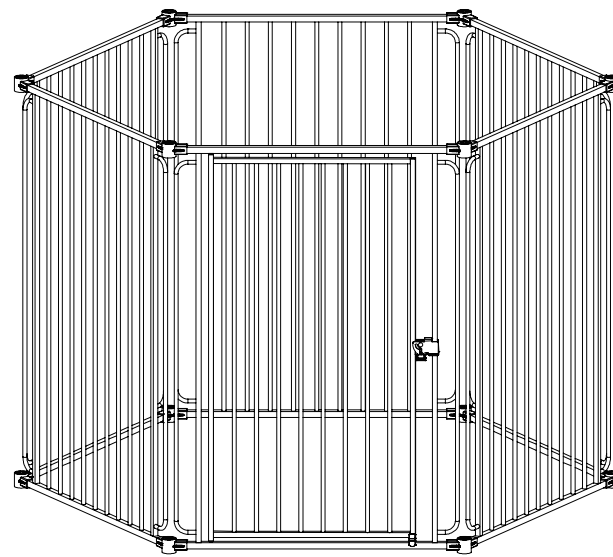
Improper installation could result in the Play Yard becoming unstable.



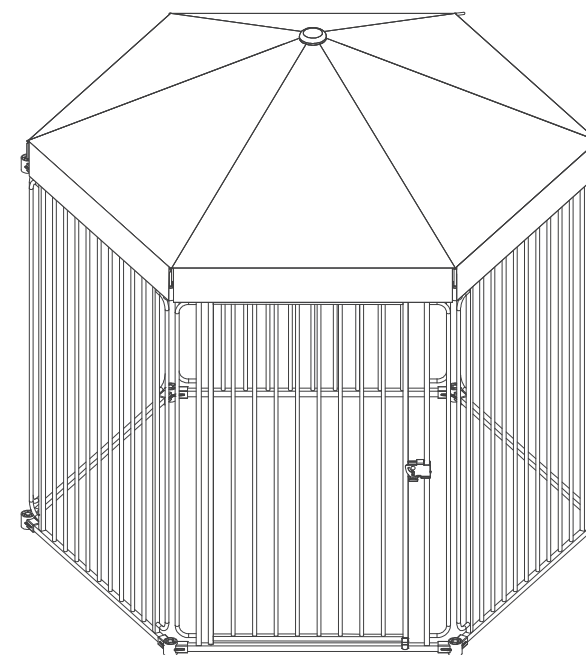
WARNING

To prevent serious injury or death, securely install Play Yard or enclosure and use according to manufacturer's instructions. Always ensure the Play Yard is resting against the ground before beginning installation. Check the Play Yard regularly to see if all the hardware and mountings are tightened. This is a Pet Play Yard. NOT intended for use with children. Strangulation hazard: pets can force themselves into very small openings; use this Play Yard with pets whose heads will not fit into openings in the Play Yard, between the Play Yard and floor, or between the Play Yard and wall. Never use with pet able to climb over or dislodge/open the Play Yard or enclosure. Never leave pet unattended. Use only with the locking/latching mechanism securely engaged.

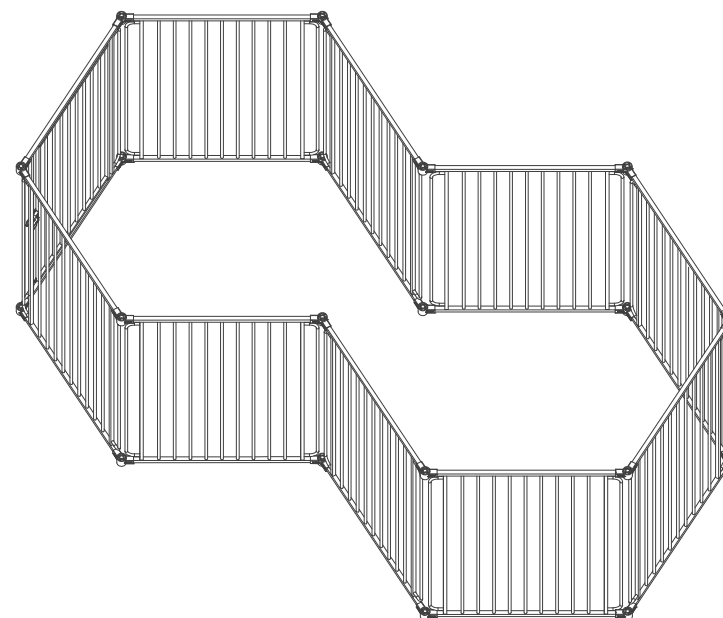
Pet Play Yard



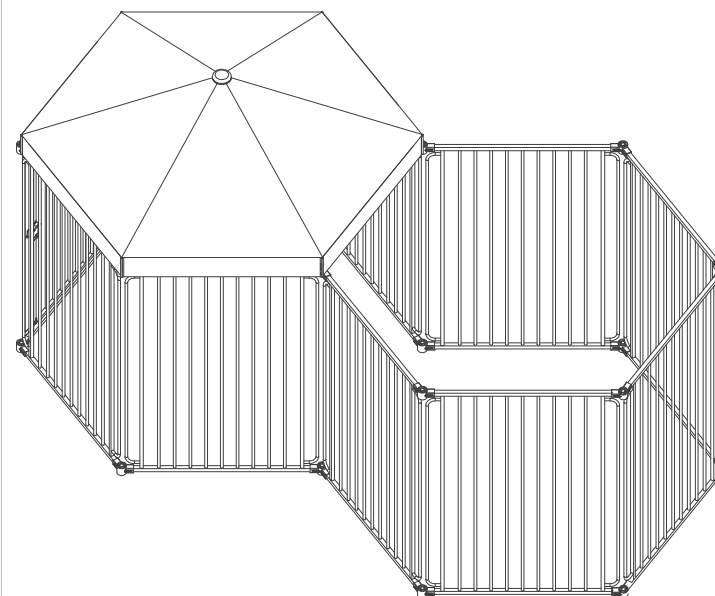
Pet Play Yard with Canopy



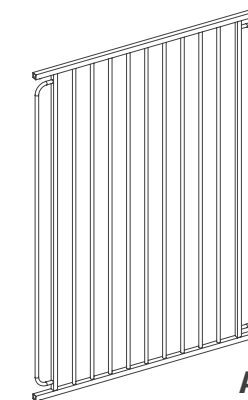
Pet Play Yard with Open Extension



Pet Play Yard with Canopy and Open Extension

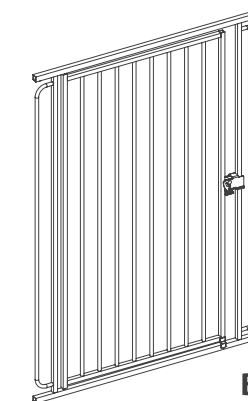


BEFORE ASSEMBLY



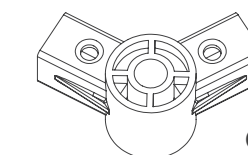
A

A: Extension
30" Height
D02-064
[9 Panels]



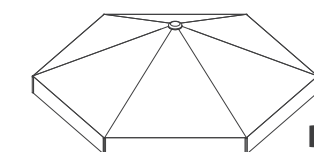
B

B: Door Extension
30" Height
D02-064
[1 Panel]



C

C: Connector
D02-064
[20 Pcs]

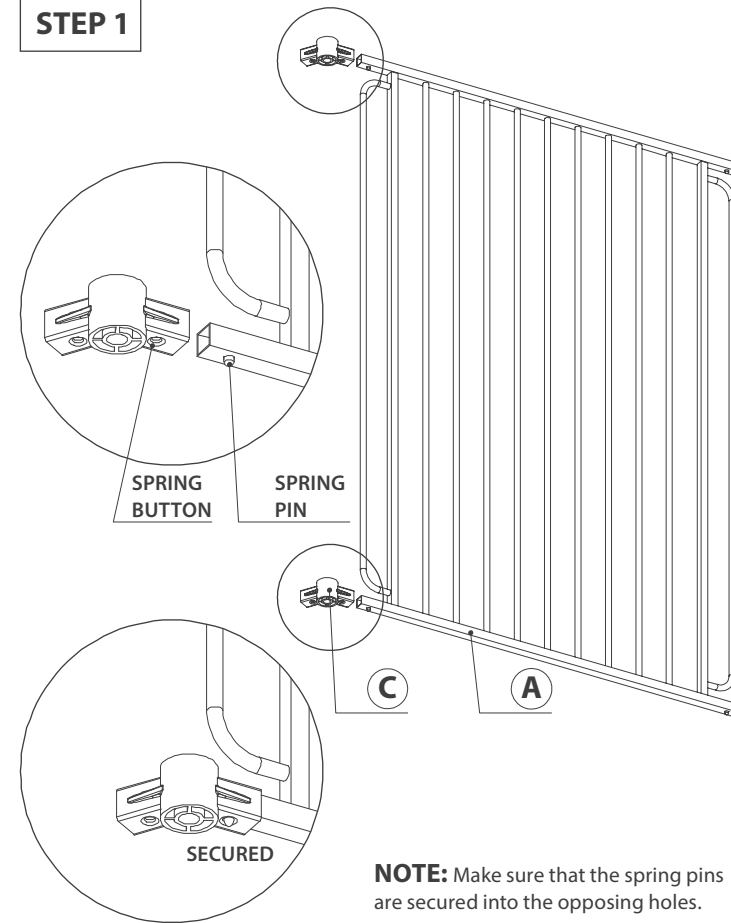


D

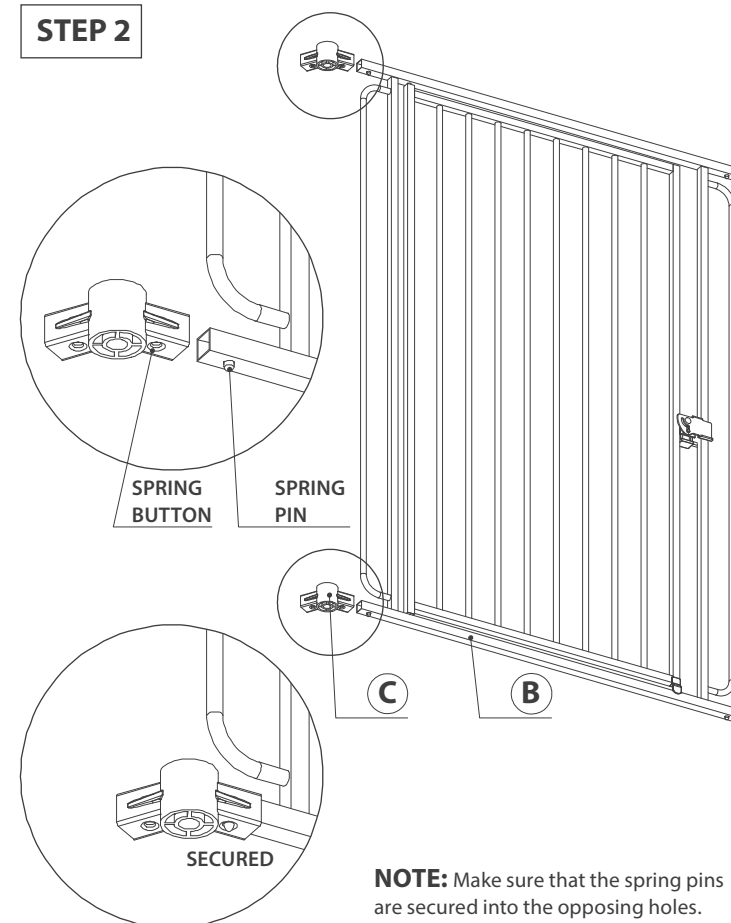
D: Canopy
48" Circle
D02-062
[1 Pc]

ASSEMBLING YOUR PLAY YARD

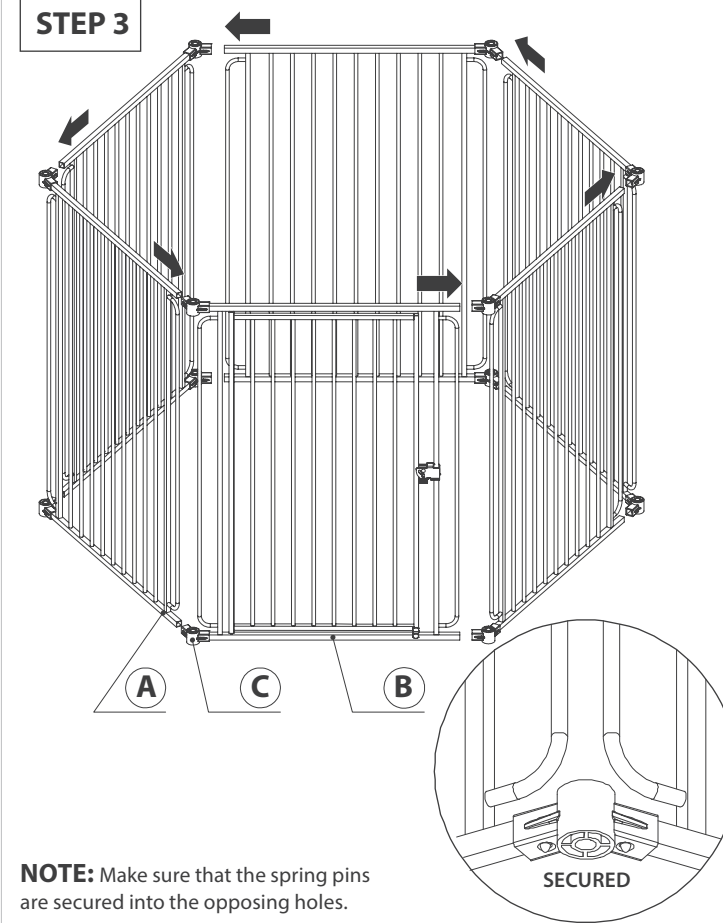
STEP 1



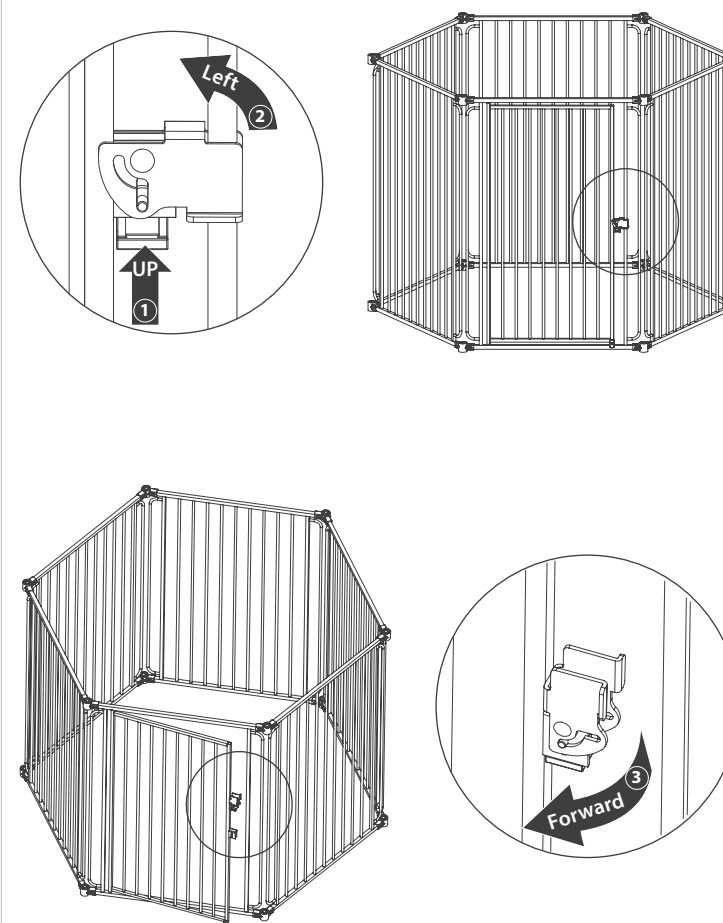
STEP 2



STEP 3

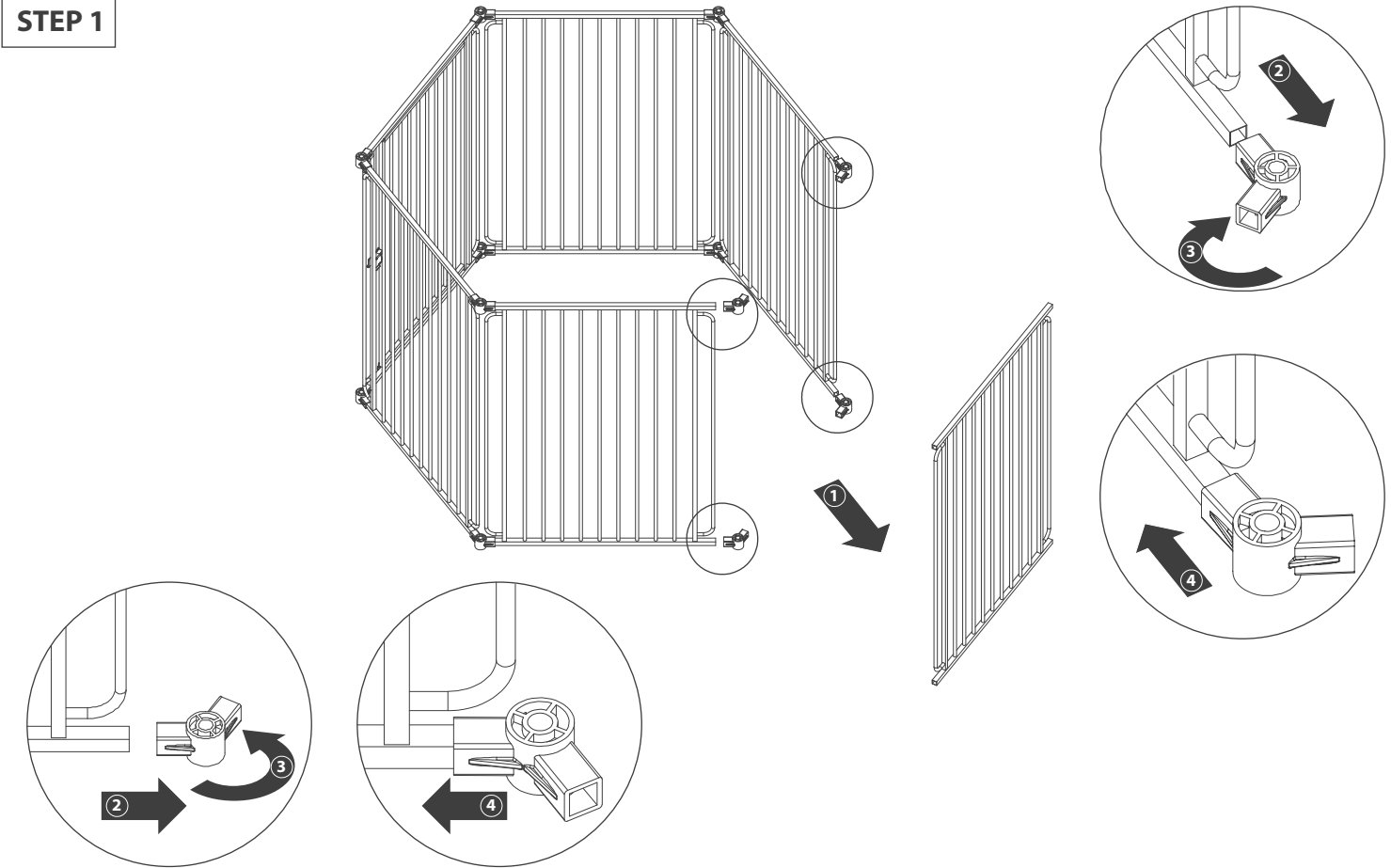


OPERATING THE DOOR LATCH

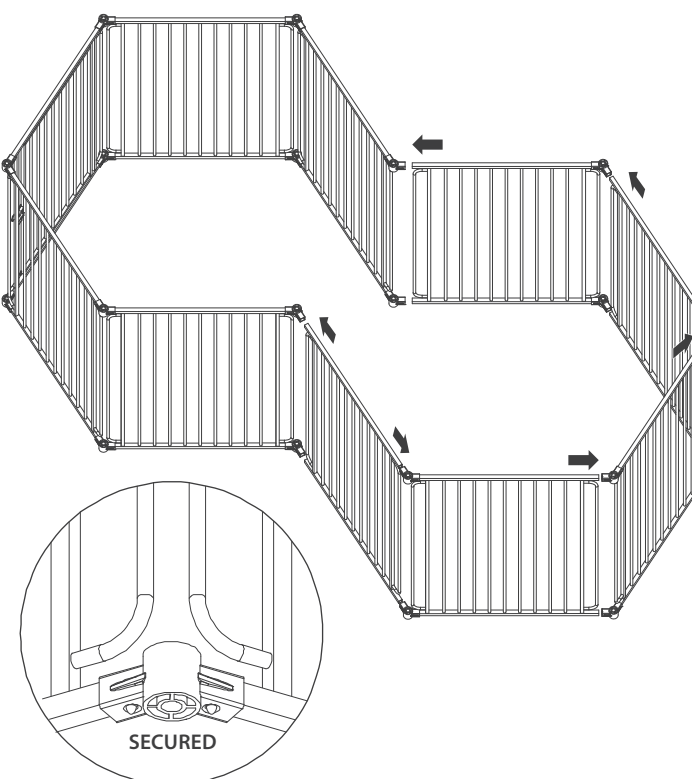


ADD OPEN EXTENSION

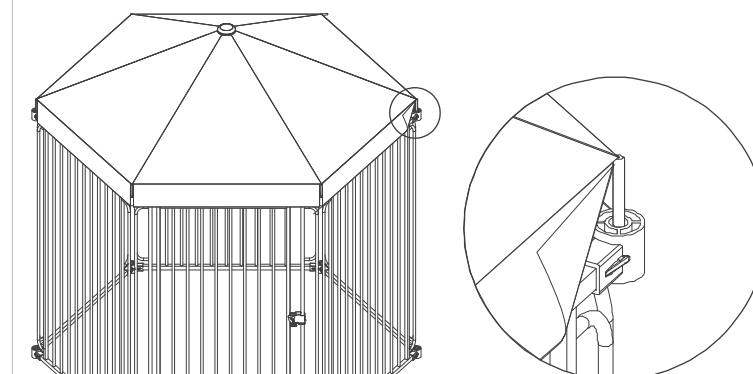
STEP 1



STEP 2



ADD CANOPY



CARE AND MAINTENANCE

Periodically check the crate for signs of damage, wear, or missing components. Do not use if any part is missing, worn or damaged. Do not use abrasive cleaners or bleach to clean your crate. Clean by sponging with warm water and a mild detergent. Wipe it dry immediately after cleaning to avoid formation of rust.