

PawHut

INdlc005_GL

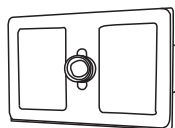
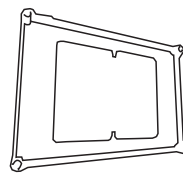
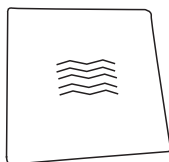
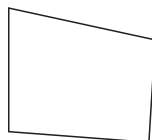
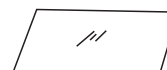
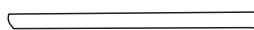
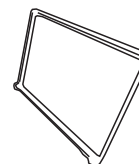
D40-017V70_D40-017V90



UK
CA CE

IMPORTANT, RETAIN FOR FUTURE REFERENCE: READ CAREFULLY

ASSEMBLY & INSTRUCTION MANUAL

A x 2**B** x 1**C** x 2**D** x 1**E** x 1**F** x 4**G** x 4**H** x 1**F** x 4 **G** x 4 **H** x 1

01



EN_F through G, and then insert into the corner of H

FR_Faites passer F entre G, puis insérer dans le coin de H

ES_Coloque F en G, y luego insértelo en la esquina de H.

DE_F durch G und dann in die Ecke von H einfügen.

IT_F tramite G, e poi inserire all'angolo di H

D x 1

02



EN_insert D at the back

FR_Insérer D à l'arrière

ES_Inserte D en la parte posterior.

DE_D auf der Rückseite einfügen

IT_Inserire D al retro

C x 1

03



EN_insert C at one side
FR_Insérer C d'un côté
ES_Inserte C en un lado.
DE_C auf einer Seite einfügen
IT_Inserire C ad un lato

C x 1

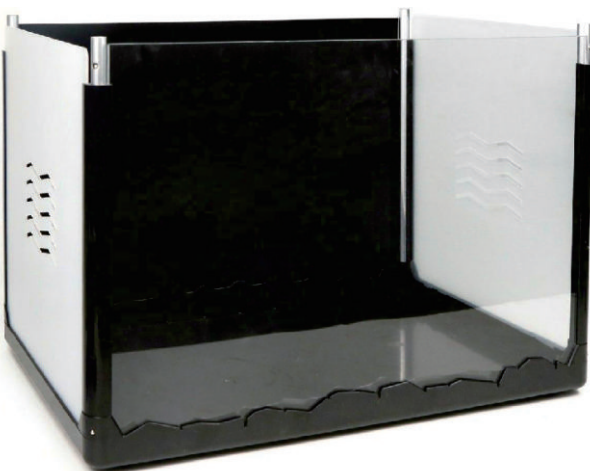
04



EN_insert C at the other side
FR_Insérer C de l'autre côté
ES_Inserte C en el otro lado.
DE_C auf der anderen Seite einfügen
IT_Inserire C ad altro lato

E x 1

05



EN_insert E at the front
FR_Insérez E à l'avant
ES_Inserte E en la parte frontal.
DE_E auf der Vorderseite einfügen
IT_Inserire E al fronte

A x 2

B x 1

Done



EN_Cover the top with B,A
FR_Couvrez le haut avec B et A
ES_Cubra la parte superior con B y A.
DE_Oben mit B, A abdecken
IT_Coprire la parte superiore con B,A