

PawHut®

INdId010_GL

D51-242



IMPORTANT, RETAIN FOR FUTURE REFERENCE: READ CAREFULLY

ASSEMBLY & INSTRUCTION MANUAL

① x 1



② x 1



③ x 1



④ x 1



⑤ x 1



⑥ x 1



⑦ x 1



⑧ x 1



⑨ x 1



⑩ x 1

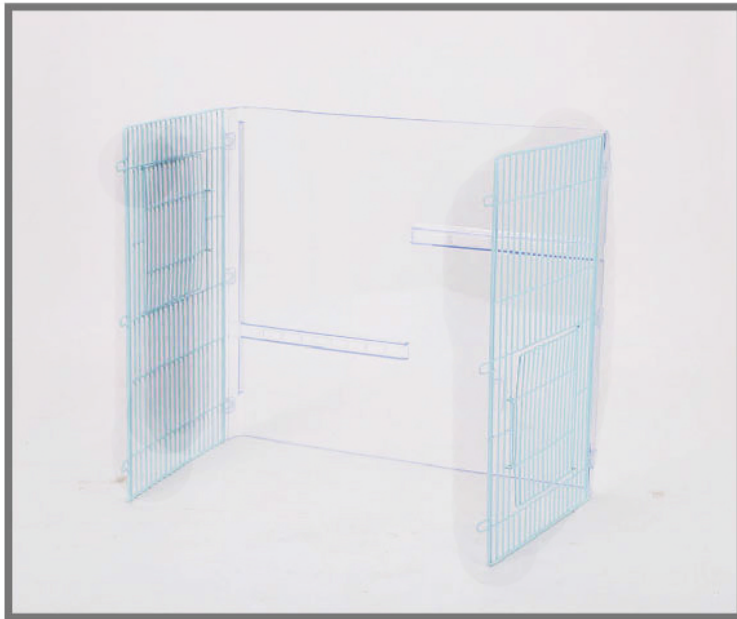


⑪ x 1

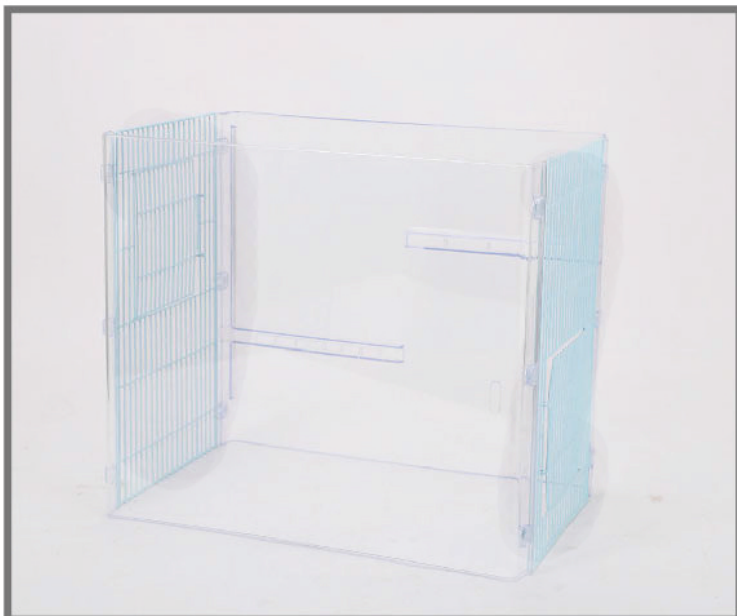


⑫ x 1





1. Place the wire in the appropriate slot



2. Place the wire in the appropriate slot



3.The cage body will be installed Add basin



4.Fix with the buckle



5.the wire is placed
in the groove



6.Place the platform
between the wire and
the transparent sheet



7. Place the slide into the hole in the platform



8. Fasten it with a nut



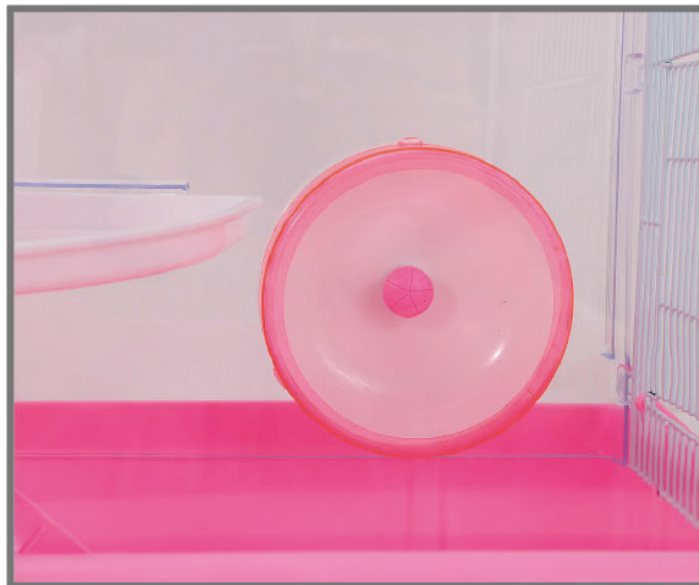
9. Fix the bearing to the wire as shown



10. Tighten the screw.



11. Assemble the water bottle.



12. Install the running wheel in the hole of the transpare



13. Then rotate and fix the fixed shaft of the running wheel



14. Install the layer 2 platform



15. Install the lid and place the transparent sheet into the slot of the lid



The finished product figure