



Children Electric Car

- Children electric car
- Installation and Operation Instructions
- Stimulation car model
- System driven by remote control
- Forward, backward and steering operations by remote control
- Forward and backward operations by manual shift
- Steering wheel's music function
- Techniques of volume regulation and MP3's amplification function
- Battery power display



WARNING: The toy is to be assembled by an adult. In unassembled state contain potentially hazardous sharp points, sharp edges and small part,so please keep out of baby's reach

Warning : Not to be used in traffic.

Parts List:(Name and Quantity)

										
A	B	C	D	E	F	G	H	I	J	
Name	Car body	Windshield	Rearview mirror	Steering Wheel	Wheel cover	wheel	Remote control	Gasket	Charger	Metal tube
Quantity	1	1	2	1	4	4	1	2	1	1



Product Specifications:

Name	Parameters
Battery	6V7AH
Generator Type	12V390/(12000RPM) 12V380 (5000RPM) 12V540 (5000RPM) /6V390 (18000RPM) 6V380 (5000RPM)
Applicable Age Range	Babies of 37-96 months
Maximum load	25KGS
Physical Dimension	115*65*50CM
Speed	3-5 kilometers per hour
Hours of Use	Using 1-2 hours after Charging 8- hours
Charging	Input: 220V-240V Output: 6V700mA
Remote Control Battery	AAA1.5V

Function



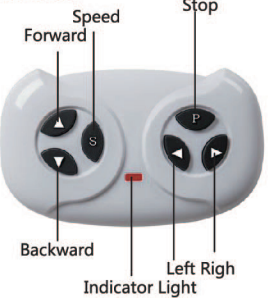
- Indicator :
- ① USB Interface
 - ② Battery Remaining Capacity
 - ③ Stimulated Instrument Panel
 - ④ Light Button
 - ⑤ Motion-swing Toggle Button
 - ⑥ Forward, Stop, Backward
 - ⑦ Start
 - ⑧ TF Card Interface
 - ⑨ MP3 Interface



Remote Control Function and Instructions

- Never switch forward and backward operations in the moving, or the gear box and motor will be damaged
- Use the remote control with battery
- Only the baby's legal guardian can use the remote control.
- The product is operated mainly by remote control

Code Method:
Press UP&DOWN Buttons to see that the indicator light is constant on, and turn on the power.



Battery Operating Specifications:

- Never mix new and old batteries, or different kinds of batteries.
- Never mistake positive and negative electrode of battery, or short circuit will happen.
- Never use non-rechargeable batteries.
- Install batteries in a right polarity.
- Only adults can recharge or change batteries.
- Never make power port's short circuit happen.
- Recharge the battery only when it is taken out of the toy car.
- Take exhausted battery out of the toy car and keep it out of Children's reach.
- Remove battery screws with a screwdriver, open battery cap as the arrow signals, and in the 2.4G remote control model install two AAA 1.5V batteries in a right polarity.

Installation Order Diagram

1.Tyre Installation

Turn over car body;distinguish front wheel from back wheel, and back wheel has plum type gear; install four wheel caps onto front wheel tyre ; put gasket into front axle of front wheel, then align front wheel with front axle, press the button in the center of tyre, and install another front wheel with the same method; put four wheel caps onto back wheel tyre, align back wheel with back axle, press the button in the center of the tyre, and install another back wheel with the same method.

If it's single drive, installa metal sleeve before installing the left rear wheel.



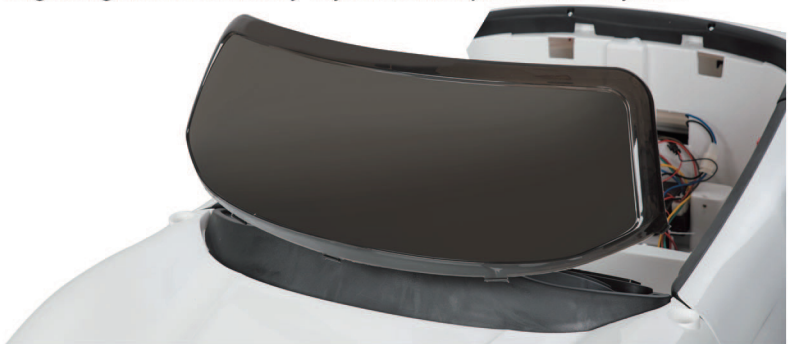
2.Steering Wheel Installation

Remove direction lever screws, connect the wiring, put steering wheel into direction lever, and fix it with screws.



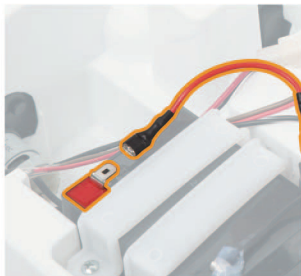
3. Install the windshied

Align barge board with body bayonet, and clip it into the bayonet.



4. Power Connection

Connect battery's red wiring, turn on the power to check if the circuit is normal.



5. Seat Installation

Remove seat screws, align seat with car body, and fix it with screws.



6. Rearview mirror Install

Align mirrors with both sides of car body, and don't mistake the right mirror and the left mirror.



Warnings

Only adults can install parts and adjust the car, and keep moving parts out of children's reach.
Children under 36 months cannot use the toy car as it has many small parts. Children must take the seat belt when using the car, and keep the car out of the fire.
Children can use the product only in the company of adults, and the adult cannot leave during the process.
Never let Children stand or play onto the pedal or in the car.
Only adults can complete storage battery charging, and must charge the product before its first use.
Keep such package materials as plastic bags out of children, or they will suffocate or kill children.
Never use parts provided by non-manufacturers.
Never let children play with the charger.
Never use the product with over 25-kilogram load.
The product's applicable age range is 37- 95 months.
The number of connected power by the product can never be over the recommended number.

Notice of use:

Never use the product in such dangerous zones as street, road, slope or drain.
Never change the circuit and additional electric devices.
Never use remote control in rainy days or in the water, never pour water or other liquid into the car, keep the product out of the fire, otherwise the car will be damaged.
Only one child can use the product, and its weight cannot exceed 25 kilograms.
Turn off the power when not in use and remove battery connector when not using it for a long time.
As the product has battery charger, check whether wire plug shell and other parts are damaged or not , and fix those damaged parts .

Charging notice:

Charge storage battery less than 10 hours, or the storage battery will be damaged forever.
In charging, put DC Plug into the power socket , put charger into power plug;never use the product during charging it.
The product can be used for one hour, and the charging time is 8-10 hours, exceeding no more than 18 hours.
It is common for charger and storage battery to have not become heated (temperature under 60 degrees)in charging.
Never use the connector with the water, or short circuit will happen.
Use the product's own charger, or cause charger and storage battery to be damaged or short circuit.
Charge the product when not using it for a long time.

Charging steps are as follows:

- Step 1 : Find the charge hole beneath the car seat'
- Step2: Put the charger plug into the plug hole.
- Step 3: Connect the charger to the power socket.



Relevant materials: PP plastics, k-carrageenan, generator, storage battery and iron castings.

Trouble Clearing

Type	Analysis	Solutions
The car cannot get started.	Low battery voltage ;	Charge battery fully;
	Protection of electric devices;	Use the car a few minutes later;
	Failure to press the switch button correctly;	Use the car according to instructions;
	Falling of power connector;	Install the connector again;
The battery cannot be charged.	Battery breakdown;	Change battery;
	Damage of electric devices;	Change electric devices;
	Generator breakdown ;	Change generator.
The battery cannot be charged.	Falling of battery connector;	Install the connector again;
	No charging for the charger;	Plug the charger again;
The car has a short range.	Charger breakdown ;	Change the charger.
There appear slight noise and heat of the car in charging.	Not full charging of battery ;	Charge fully the battery again;
	Much-used battery ;	Change the battery.
The car has a slow speed.	Chemical reactions ;	Normal reactions
The car has a slow speed.	Much-used battery ;	Change the battery
	No electricity for battery ;	Charge fully the battery again
	Overload ;	Reduce the load below 25 kilograms
	Uneven driving surface ;	Drive on uneven surface

Maintenance and Service

Before use children's parents should check whether charge's wiring, plug, shell and other parts are damaged, and fix those damaged parts.
After using the product for a time, parents should lubricate iron castings with lube, or those castings will get rusted; they should keep the product out of fire and lay it flat in dark places; they should put the product inside the house or cover it with one water-proof cloth in wet whether.
Parents should keep the product out of such hot objects as stove and heater, or its plastic parts may be thawed; they should keep the product out of combustible objects in charging, or the fire may happen.
Parents should clean car surface with one dry cloth, or clean plastic parts with non-waxy furniture polish; they shouldn't clean plastic parts with chemical solutions or clean the car with water; children cannot drive the car in wet or rainy weather, or the car's generator, circuit system and battery will be damaged.
when not using or laying the product, parents should cut off car power, keeping all the switches into "STOP" or "OFF" model.
Parents mustn't use the fuse which doesn't conform with the agreed specifications.
Parents should't change product structure and circuit system, and should have the product checked and fixed by professionals or under the guidance of professionals.