



INfad001\_US\_CA\_370-151

# Guide Book

- Tractor sound
- Volume adjustment
- Power display
- Forward and backward
- High and low speed
- Remote control(Optional)
- Trailer(Optional)



**⚠️ WARNING:** The toy is to be assembled by an adult. In unassembled state contain potentially hazardous sharp points, sharp edges and small part,so please keep out of baby' s reach

**⚠️ Warning :** Not to be used in traffic.

US



001-877-644-9366  
customerservice@aosom.com

CA



001-855-537-6088  
customerservice@aosom.ca

## Parts List:(Name and Quantity)

Parts List:(Name and Quantity)													
<b>Name</b>	Car body	Rear wheel	Front wheel	Trailer wheel	Seat	Steering wheel	Fender(L/R)	Trailer linkage	Trailer support	Exhaust pipe	Trailer bolt	Motor(L/R)	M10 spanner
<b>Quantity</b>	1	2	2	2	1	1	2	1	1	1	1	2	2
<b>Name</b>	N	O	P	Q	R	S	T	U	V	W	X	Y	Z
<b>Quantity</b>	1	1	2	1	1	28	4	6	1	2	2	2	6

Remark: if you purchase the tractor without trailer, accessory will not include D H I K N O P R T Y.  
Please note that Z will be only used 4pcs for tractor without trailer, if tractor with trailer, it will be used 6pcs.



## Product Specifications:

Name	Specification
Battery	12V7A*1
Suitable age	37-95 months
Loading capacity	35kg
Product size	180*70*70cm
Speed	3-5 km/h
Charge/Use time	charge 8-12h, use 1-2h
Charger	Input: 100-120V Output: 12V 1000mA

The above parameters are selected by the customer and the specific parameters shall be subject to the actual sample.

## Function



### Button function

- |                         |                    |
|-------------------------|--------------------|
| ① Power display         | ⑥ Forward/backward |
| ② Music switch/Volume - | ⑦ Power switch     |
| ③ Stop/play             | ⑧ High/low speed   |
| ④ Music switch/Volume + | ⑨ Pedal switch     |
| ⑤ Mode switch           |                    |

## Installation Order Diagram

### 1. Front wheel and fender assembly

First, insert the left fender into the reserved place on the car, then use 3pcs flat head 4x12 screw to tighten. Then add 1pcs big washer, front wheel, 1pcs big washer step by step, use M10 spanner to tighten the nut. Finally put the front wheel cover on. The same assembly step for the other side.



### 4. Steering wheel and exhaust pipe assembly

Unscrew the screw and nut from the steering wheel, then insert the steering wheel into the direction lever, match the holes of direction lever and steering wheel, use screw and nut to tighten. Insert the exhaust pipe into the reserved place on the car.



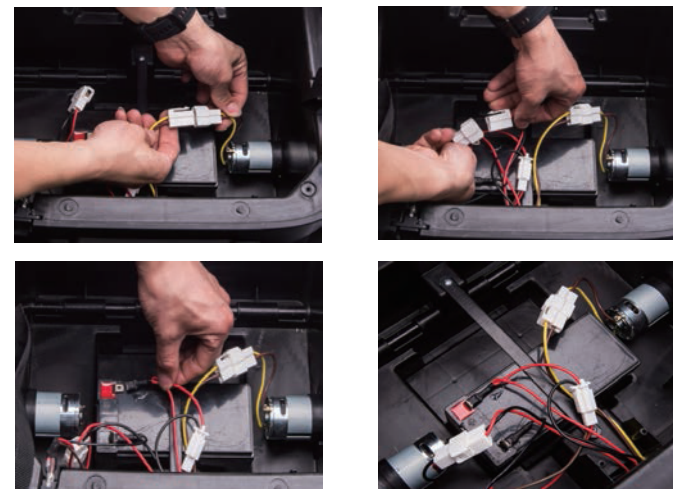
### 2. Rear axle, motor and rear wheel assembly

Insert the rear axle into the reserved hole on the car from the right side, then add motor (R to R, L to L), rear wheel, 1pcs big washer step by step. Use M10 spanner to tighten the nut. Finally put the rear wheel cover on. The same assembly step for the other side.



### 5. Motor line and battery line connection

Connect the motor line yellow to yellow, red to red. Connect the red battery line to the red terminal.



### 6. Seat assembly

Insert the seat into the reserved place on the car, use 2pcs flat head 4x12 screw to tighten.



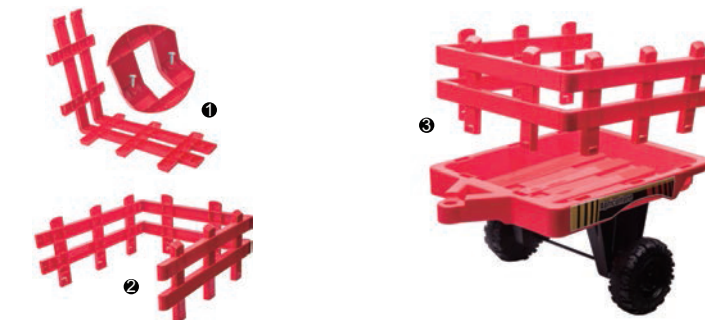
### 7. Trailer support, trailer axle and trailer wheel assembly (if equipped)

Turn over the trailer house, then insert the trailer support into the reserved place on it. Use 10pcs flat head 4x12 screw to tighten. Insert the trailer axle into the trailer support, add 1pcs small washer, trailer wheel, 1pcs small washer step by step, use M10 spanner to tighten the nut. Finally put the front wheel cover on. The same assembly step for the other side.



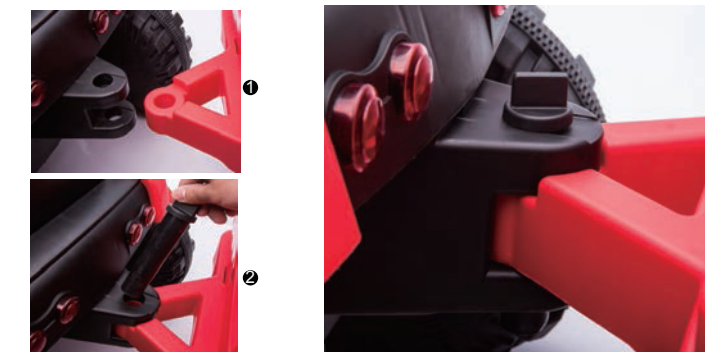
### 8. Front rail and side rail assembly (if equipped)

Match the holes of the front rail and side rail, use 4pcs flat head 4x12 screw to tighten. Insert the rail into the reserved place on the trailer house.



### 9. Trailer bolt assembly (if equipped)

Insert the trailer house into the reserved place on the trailer linkage, use trailer bolt to connect.



### 3. Trailer linkage assembly (if equipped)

Insert the trailer linkage into the reserved place on the car, then turn the car over, use 6pcs flat head 4x12 screw to tighten.



### Safety use

Do not play in the street, road, slope or ditch.  
Do not change the line or add electric device to the car.  
Play the car in the dry area, not wet. Keep away from fire, or may damage the line.  
One or two riders one time only. Do not overload.  
Maximum capacity is 35KG.  
Turn power off if no use. If long time no use, unplug battery line.  
Check battery, charger and other spare parts regularly.  
If any problem, please fix it before playing.

### Charging notification

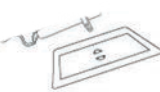
For the first use, please charge 8-12 hours, or will damage the battery.  
Plug charger DC line into charge hole first, then plug charger into socket. Car can not be played when it charging.  
Every time it charged, do not charge more than 20 hours.  
It is normal that charger and battery warm (under 60°) during charging.  
Do not charge if plug is wet, or will occur short-circuited.  
Only use charger provided by manufacturer, or will damage charger and battery or occur short-circuited.  
If long time no use, please charge 1 time per month at least.

### Charging steps are as follows:

Step 1: The charging hole is under the steering wheel.

Step 2: Put the charger plug into the plug hole.

Step 3: Connect the charger to the power socket.



**Warning: Car must be charged by adults only. Car is useless during charging**

### Maintenance and Service

Check battery, charger and other spare parts regularly. If any problem, please fix it before playing.  
• Use lubricating oil to care iron parts. Keep car away from fire and sunshine. Park it on the even place, not reversal or gradient.  
• Park it indoor and cover it with waterproof cloth.  
• Keep car away from fire, like stove or heater, or plastic may melt.  
Keep away from flammable things, or may occur fire accident.  
• Charge it after use and must be done by adults only. If long time no use, please charge it 1 time per month, in order to maintain battery.  
• Clean the vehicle with a dry cloth only. Do not use chemical solvent to wipe plastic parts. Do not wash it with water or play it when raining or snowing. Water will damage motor, electric system or battery.  
• Please turn power off after each use.  
• Only use charger provided by manufacturer.  
• Do not change car's structure or electric line. Check job request some skills or under specialist's guidance.

### Warnings

For children's safety, please read these carefully.  
Assembly and adjustment must be done by adults, keep children away.  
Keep children under 36 months away from small parts.  
Safe belt is a must when children playing. Do not be closeto fire.  
Adult must teach how to play it and never leave children alone for playing.  
Do not stand up or play when children are stepping on foot pedal.  
Battery must be charged by adults only. Please charge it first before use.  
Keep children away from plastic bag, or suffocation may occur.  
Only use spare parts which provided by manufacturer.  
Charger is not a toy for playing.  
Maximum loading capacity is 35KG. Do not overload.  
Suitable age: 37-95 months.