

Tips

1. This product is only for adult assembly.
2. Place on a flat, clean floor.
3. Please use under the supervision of adults, prohibit children climbing.
4. Keep away from sources of ignition.
5. There should be a suitable open space around the installation area.
6. Please place in a well-lit room.
7. Can not be placed in water or water seepage of the ground.
8. Can not be used upside down.
9. Check that all parts are stable before use.
10. Before use, please carefully check the playpen inside whether there is other insecurity.
11. Packing materials are non-toys, please keep them properly.
12. Please use sponge and soapy water and other non-corrosive products to clean the product regularly to let the baby play in a clean environment.
13. Age recommendation: 6 months -72 months



INfca036_US
431-049
431-049V01
431-049V02

6M-6Y



US



001-877-644-9366
customerservice@aosom.com

CA



001-855-537-6088
customerservice@aosom.ca

UK



0044-800-240-4004
enquiries@mhstar.co.uk

DE



0049-(0)40-88307530
service@aosom.de

FR



0033-1-84166106
contact@aosom.fr

ES



0034-931294512
atencioncliente@aosom.es

IT



0039-0249471447
clienti@aosom.it

Aosom



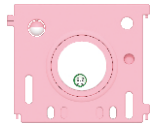
Bubble Playpen Instruction Manual

READ AND SAVE THIS INSTRUCTION FOR FUTURE USE

Playpen Packing Accessories



A. Door Panel x1



B. Game Panel x1



C. Small Panel
x12(431-049)
x10(431-049V01)
x8(431-049V02)



D. Bottom Base
with Suction Cups
x14(431-049)
x12(431-049V01)
x10(431-049V02)



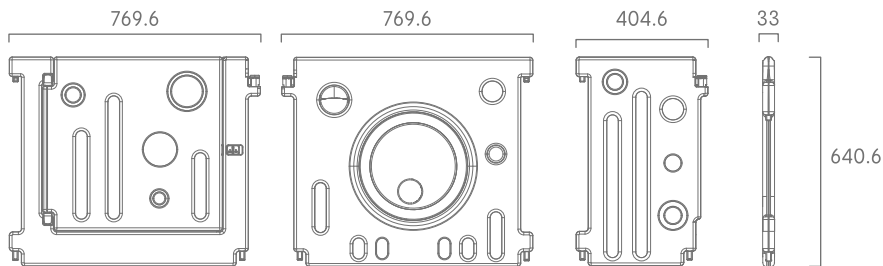
E. Manual x1



F. DIY Sticker

Product Size

Unit: mm



Precautions



Can not be placed in the sand surface, uneven ground



Can not be placed on a slope



Can not be placed in water or water seepage.



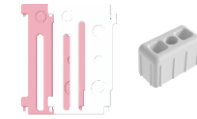
Place on a flat, spacious floor.



Product Installation

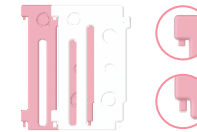
Step 1

Take one panel connected with the bottom base.



Step 2

Take another panel parallel up and down to align the panel slot and bottom base slot. Press firmly.



Step 3

Make connection in turn to complete the installation. Please check, if the playpen is firmly installed before use.



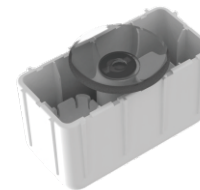
Each panel will be connected by the bottom base with a suction cup which makes the playpen stand more firmly.

Tips:

1. Disassembly needs more effort. In order to increase the stability of the playpen, designers specially make tight fitting.
2. Check regularly whether the connecting element is stable or not during use.

FAQ

What to do if the bottom suction caps are not sticking?



- Rough and not smooth surface is not adsorption, such as: wood, concrete floor
- If there is debris on the suction cups, clean with rag or water
- If the suction cups leaks, or has poor suction, you can soak it in boiling water and then paste it to the ground when it is hot.

ATTENTION: Please clean the suction cups regularly in case of dirty, poor suction during use.