



INfda005V01\_UK

**370-149V70**



READ AND SAVE THIS INSTRUCTION FOR FUTURE USE

**ASSEMBLY INSTRUCTION**

## SPECIFICATIONS:

Battery:	12V10AH *1
Motor:	2*555(120W)
Suitable ages:	37-96 months
Maximum weight:	30KG
Speed :	3-6KM/h
Power way:	Charging type
Use of time:	Charg: 8-12 hours ; Use: 1-2 hours
Charger:	Input AC 110 V~240, output DC12V 1000mA

## WARNING

- 1.The pictures in this instruction is only for explaining the operation and structure of the product, when there's any difference with the real product, please confirm with the real product.
- 2.In order to improve the quality of the product, we may amend some structure or appearance of the product without notification. Thank you for your understanding.

## FOR THE SAFETY OF YOUR CHILD, PLEASE READ ALL WARNINGS AND ASSEMBLY/USE INSTRUCTIONS. KEEP THIS GUIDE FOR FUTURE REFERENCE.

- ADULT ASSEMBLY REQUIRED. The product contains small parts, which are for adult assembly only. keep small children away when assembling.
- always remove protective material and poly bags and dispose before assembly.
- never leave child unattended. direct adult supervision is required.
- always keep child in view when child is in vehicle.
- Keep Children within Safe Riding Areas:
  - Never use in roadways, near motor vehicles, on lawn space, on or near steep inclines or steps, swimming pools or or any other dangerous area.
- Use the toy only on flat surfaces. Such as inside your house, garden or playground.
- Never use in the dark. A child could encounter unexpected obstacles and have an accident. Operate the vehicle only in the daytime or a well-lit area.
- Please avoid running on sand or any other rough ground.
- always wear shoes.
- always sit on the seat.
- this has no brake.
- It is prohibited to change the circuit or add other electric parts
- Inspect wires and connections of the vehicle periodically.
- Do not let any child touch the wheels or be near them when the car is moving.
- This vehicle has adjustable play seat belts. Please instruct children how to tie the safety belt before using, guarantee the security.

## **STORAGE BATTERY INFORMATION AND MAINTENANCE**

- Please charge 8 to 12 hours before first time use.
- Please use the suitable adapter to charge storage battery, otherwise the ride-on will be damaged.
- Please charge the car once the speed is slower than normal, otherwise it will decrease storage battery life.
- Please fully charge the battery before you put your ride-on away, and remember to recharge the battery every 30 days. This will ensure the normal use of the battery, otherwise, the battery might not hold a charge without proper maintenance.
- Batteries may leak fluids that can cause chemical burn injury or ruin your product.
- To avoid battery leakage: Do not mix old and new batteries or batteries of different types: alkaline, standard (carbon-zinc) or rechargeable (nickel-cadmium).
- Insert batteries as indicated inside the battery compartment. Remove batteries during long periods of non-use.
- Always remove exhausted batteries from the product. Dispose of batteries safely. Do not dispose of batteries in a fire. The batteries may explode or leak.
- Never short-circuit the battery terminals.
- Non-rechargeable batteries are not to be recharged.
- Use only batteries of the same or equivalent type as recommended.
- Do not charge non-rechargeable batteries.
- Remove rechargeable batteries from the product before charging.
- If removable rechargeable batteries are used, they are only to be charged under adult supervision
- Every single charging can not go over 20 hours. Both charger and storage batteries will occur mildly warm during charging. Do not use mal-functioned adapter or storage battery unless they are repaired.
- Charger and storage batteries are not considered as toys.
- Please make periodical inspection for storage battery, especially for adapter wires and plugs.
- Please turn off the switch when the ride-on is not in use. Please do a full charge after long periods of inactivity.
- Charge in well ventilated, dry place. Do not open the battery or the charger.
- Tighten the screws with a screwdriver. DO NOT over tighten

### **Disposal Of Battery:**

1. Your sealed lead-acid battery must be recycled or disposed of in an environmentally sound manner.
2. Do not dispose of your lead-acid battery in a fire. The battery may explode or leak.
3. Do not dispose of a lead-acid battery in your regular, household trash. The incineration, land filling or mixing of sealed lead-acid batteries with household trash is prohibited by law.

## **PREVENT FIRE AND ELECTRIC SHOCK:**

- Use the only rechargeable battery and charger supplied with your vehicle.
  - NEVER substitute the battery or the charger with another brand. Using another battery or charger may cause a fire or explosion.
  - Do not use the battery or charger for any other product. Overheating, fire or explosion could occur.
  - NEVER modify the electric circuit system. Tampering with the electric system may cause a shock, fire or explosion or may permanently damage the system.
  - Do not allow direct contact between battery terminals. Fire or explosion can occur.
  - Do not allow any type of liquid on the battery or its components.
  - Explosive gasses are created during charging. Do not charge near heat or flammable materials. Charge the battery in a well- ventilated area ONLY.
  - NEVER pick up the battery by the wires or charger. Damage can occur to the battery and may cause a fire. Pick up the battery by the case ONLY. Charge the battery in a dry area ONLY.
  - Battery posts, terminals and related accessories contain lead and lead compounds, chemicals known to the State of California to cause cancer and reproductive harm. Wash hands after handling.
  - Do not open the battery. Battery contains lead acid and other materials that are toxic and corrosive.
  - Do not open the charger. Exposed wiring and circuitry inside case may cause electric shock.
- ONLY adults may handle or charge the battery. NEVER allow child to handle or charge the battery. Battery is heavy and contains lead acid (electrolyte).
- Do not drop the battery. Permanent damage to the battery could occur or cause serious injury.
  - Before charging the battery, check for wear or damage to the battery, charger, its supply cord and the connectors. DO NOT charge the battery if any damage to parts has occurred.
- Do not allow the battery to drain completely. Recharge the battery after each use or once a month if not used regularly.
- Do not charge battery upside down.
  - Always secure the battery with the bracket. Battery can fall out and injure a child if vehicle tips over.
  - It is parents' responsibility to check main parts of the toy before using, Must regularly examine for potential hazard, such as the battery, charge, cable or cord, plug, screws are fastening enclosure of other parts and that in the event of such damage, the toy must not be until that damage had been properly removed. Make sure the plastic parts of the vehicle are not cracked or broken.
  - Occasionally use a lightweight oil to lubricate moving parts such as wheels.
  - Park the vehicle indoors or cover it with a tarp to protect it from wet weather.
  - Keep the vehicle away from sources of heat, such as stoves and heaters. Plastic parts may melt.

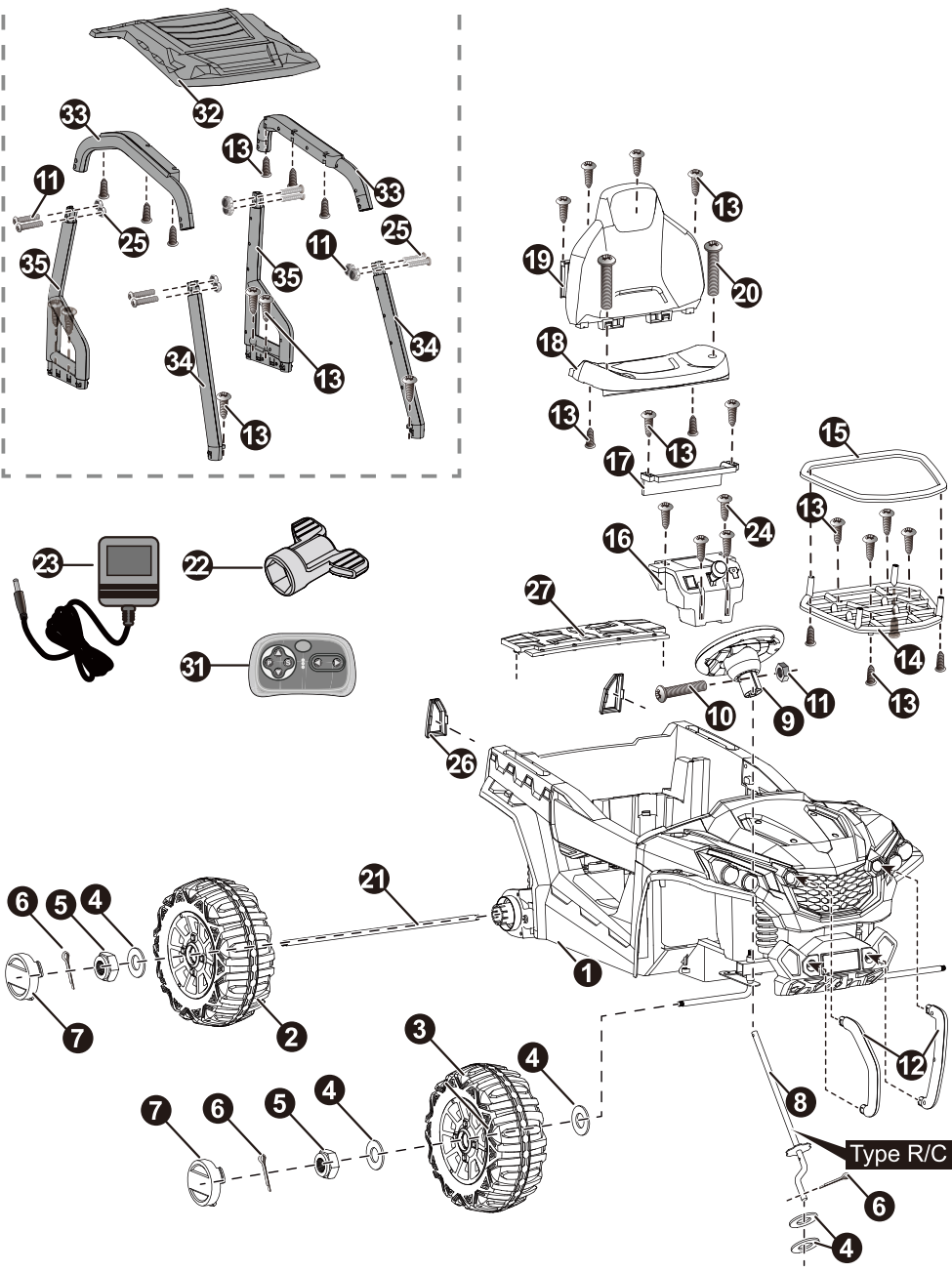


- Recharge the battery after each use. Only an adult can handle the battery. Recharge the battery at least once a month when the vehicle Raider is not being used.
- Do not wash the vehicle with a hose. Do not wash the vehicle with soap and water. Do not drive the vehicle in rainy or snowy weather. Water will damage the motor, electric system and battery.
- Clean the vehicle with a soft, dry cloth. To restore shine to plastic parts, use a non-wax furniture polish. Do not use car wax. Do not use abrasive cleaners.
- Do not drive the vehicle in loose dirt, sand or fine gravel which could damage moving parts, motors or the electric system.
- When not using, all the electrical source should be turn off. Turn off the power switch and disconnect the battery connection.

# Parts Diagram | 2

HINT: Some parts shown are assembled on both sides of vehicle

## Roof



## Parts List | 3

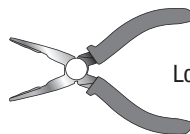
PART NO.	PART NAME	Q'ty (pcs)	REMARKS
1	Vehicle body	1	
2	Rear wheel	2	
3	Front wheel	2	
4	Ø12 washer	8	
5	Lock nut	4	
6	Split pin	5	
7	Hubcap	4	
8	Steering column	1	
9	Steering wheel	1	
10	M5x35 machine screw	1	Placed on the steering wheel
11	Ø5 nut	9	Placed on the steering wheel
12	Front bumper	2	Left and right
13	Ø4x12 flat head screw	28	
14	Bakset base	1	
15	Bakset fence	1	
16	Shift lever assembly	1	
17	Protecting board	1	
18	Seat	1	
19	Seat back	1	
20	M5x16 machine screw	2	
21	Rear axle	1	
22	Spanner	2	
23	Charger	1	
24	Ø4x12 round head screw	4	
25	M5x25 machine screw	8	
26	Taillight cover	2	Left and right
27	Rear bed board	1	
31	Remote controller	1	For R/C type only
32	Roof	1	
33	Roof beam	2	Left and right
34	Roof front support	2	Left and right
35	Roof rear support	2	Left and right

## Attach the Front Bumpers & Taillight Cover | 4

Assembly tools required (not included):

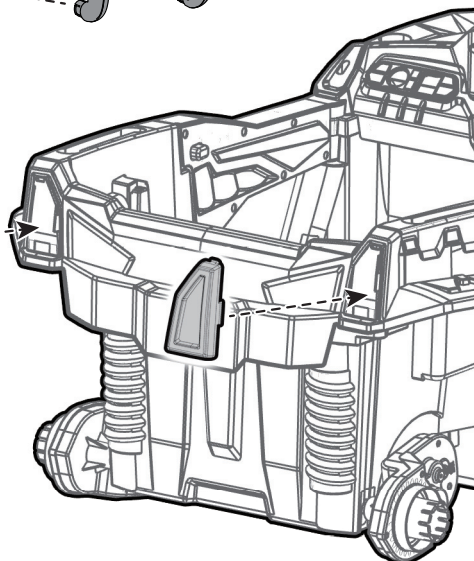
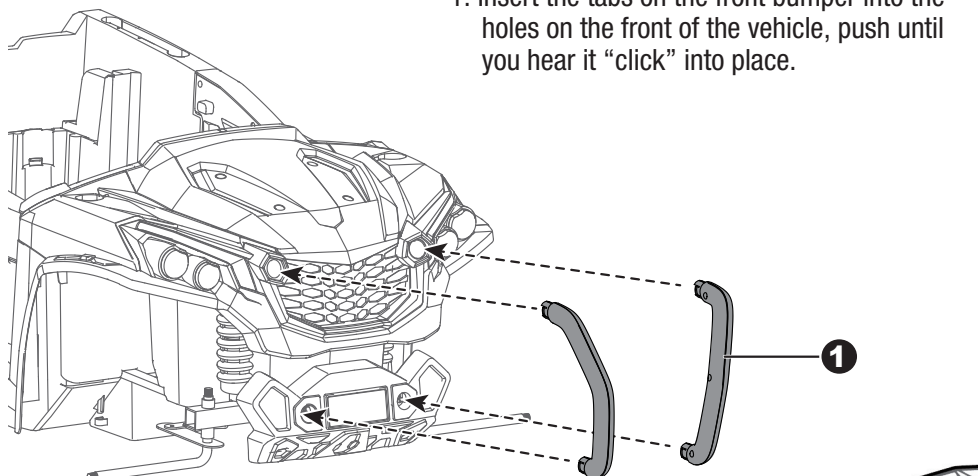


Screwdriver



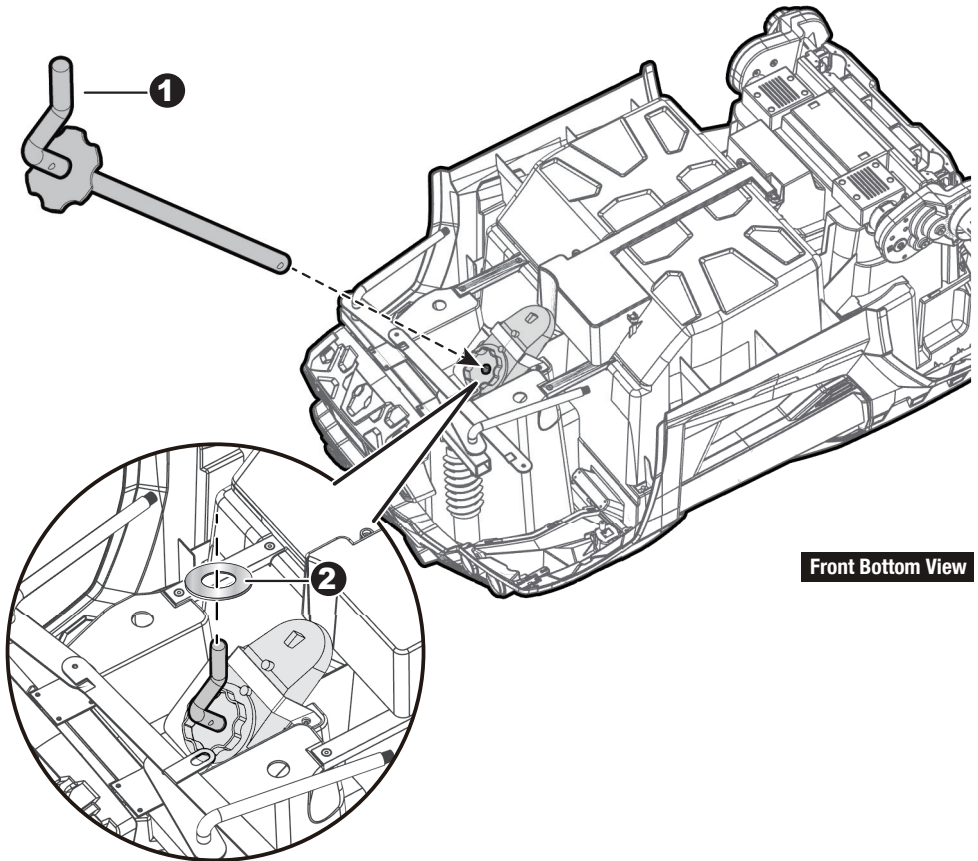
Long nose pliers

1. Insert the tabs on the front bumper into the holes on the front of the vehicle, push until you hear it “click” into place.



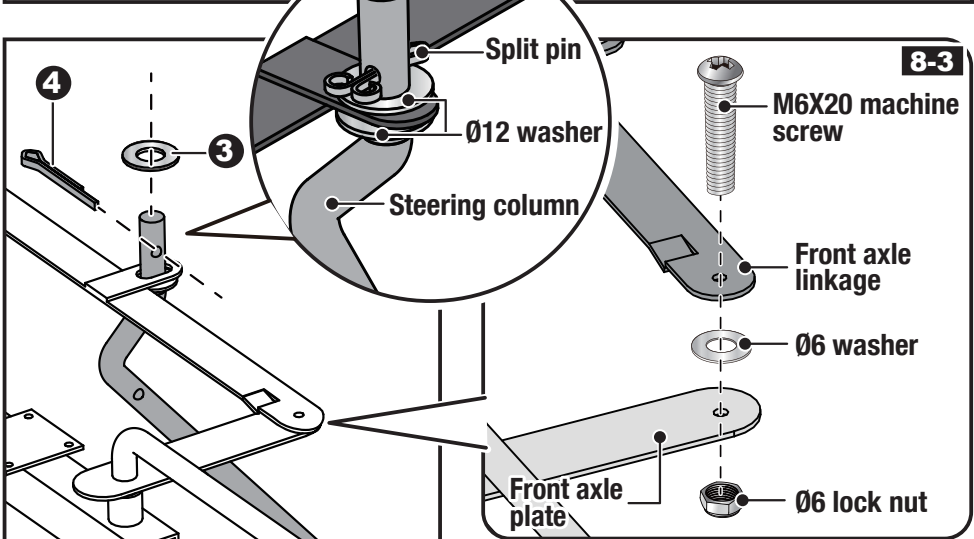
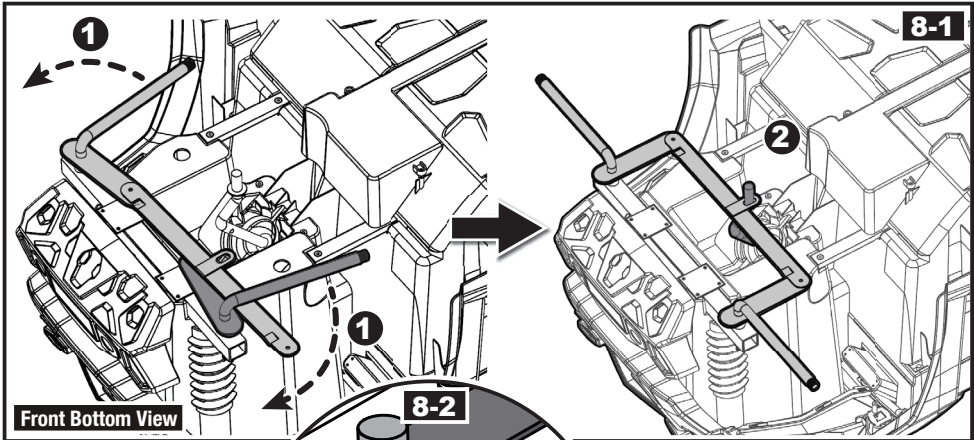
2. Insert the left and right taillight covers and “snap” into place.

**HINT:** The follow steps only for the type R/C.



Turn the vehicle body downside up.

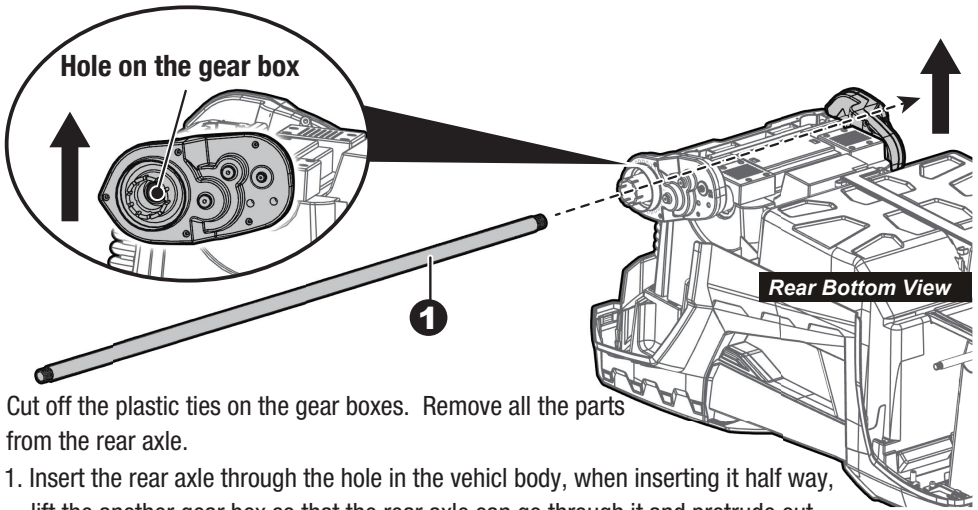
1. Insert the straight end of the steering column through the hole on the steering gear box, the hole on the vehicle body, and out through hole on the dash. Ensure the gear part on the steering column matches up with the steering gear box.
2. Slide a  $\varnothing 12$  washer onto the steering column from the bent end.



Cut off the plastic tie on the front axle with scissors.

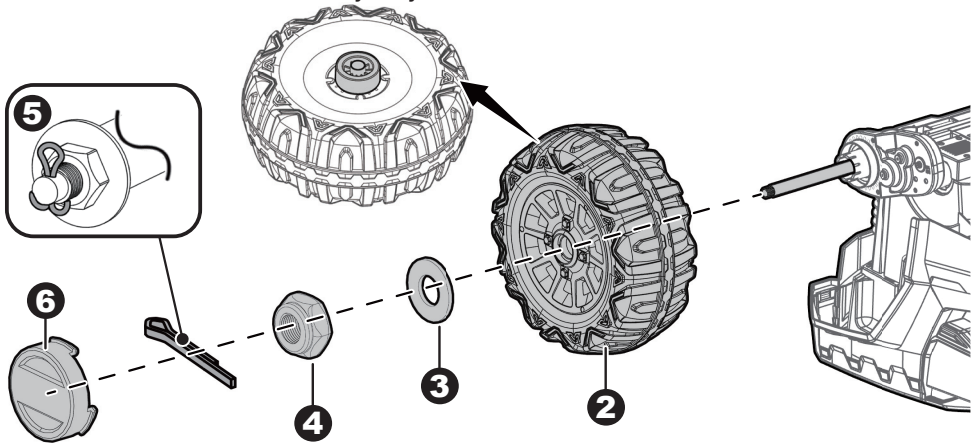
- 1,2. Adjust the front axle plate so that the axle is in the correct position as shown (8-1);
3. Slide a Ø12 washer onto the steering column from the bent end.
4. Insert the split pin into the hole on the bent end of the steering column. Bend the ends of split pin back using a long nose pliers (not included).
5. Remove the M6x20 machine screw, Ø6 washer and Ø6 lock nut from the front axle linkage. Reinsert the M6x20 machine screw through the hole on the front axle linkage, the Ø6 washer, the hole on the front axle plate, and fasten the Ø6 lock nut to the opposite end of the screw.

## Attach the Rear Wheels | 7



Cut off the plastic ties on the gear boxes. Remove all the parts from the rear axle.

1. Insert the rear axle through the hole in the vehicle body, when inserting it half way, lift the another gear box so that the rear axle can go through it and protrude out. Make sure that the rear axle is centered with left and right ends exposed the same distance outside of the ride-on toy body.



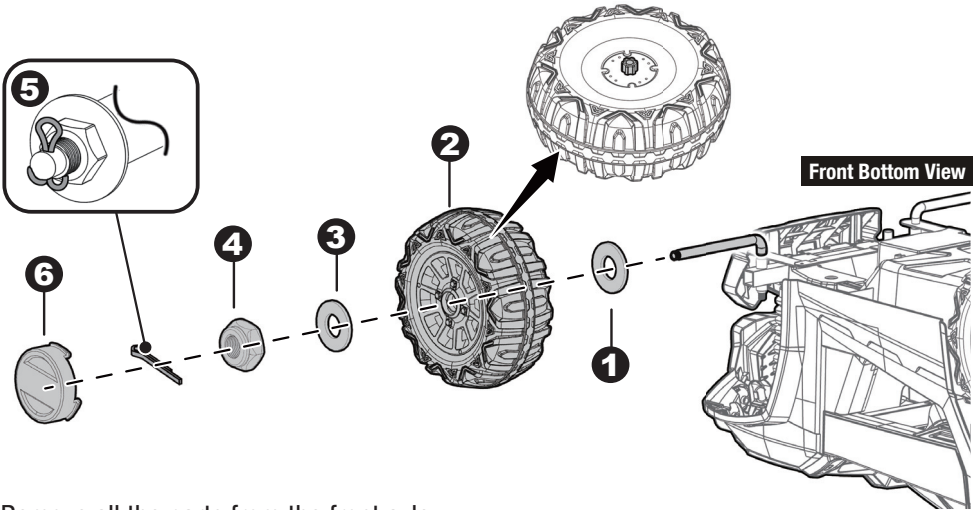
2. Slide the rear wheel onto the rear axle .
3. Slide the  $\varnothing 12$  washer onto the rear axle.
4. Tighten a lock nut to the end of the rear axle with a spanner.

Repeat the 2-4 steps for the other rear wheel.

**HINT:** An extra spanner has been provided to hold the Lock Nut on the other side of the rear axle while tightening the Lock Nut on the other side. **DO NOT** over tighten.

5. Insert a split pin into the hole on the each end of the rear axle. Bend the ends of split pins back using a long nose pliers (not included).
6. “Snap” a hubcap to each rear wheel.

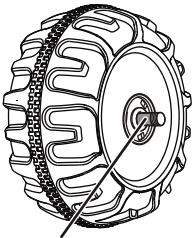




Remove all the parts from the front axle.

1. Slide a  $\varnothing 12$  washer onto the front axle.
2. Slide a front wheel onto the front axle.
3. Slide a  $\varnothing 12$  washer onto the front axle.
4. Tighten a lock nut to the end of the front axle with a spanner. DO NOT over tighten.
5. Insert the split pin into the hole on the end of the rear axle. Bend the ends of split pin back using a long nose pliers (not included).
6. “Snap” the hubcap to the wheel.

Repeat the above procedure to assemble the other front wheel.



**GAP**

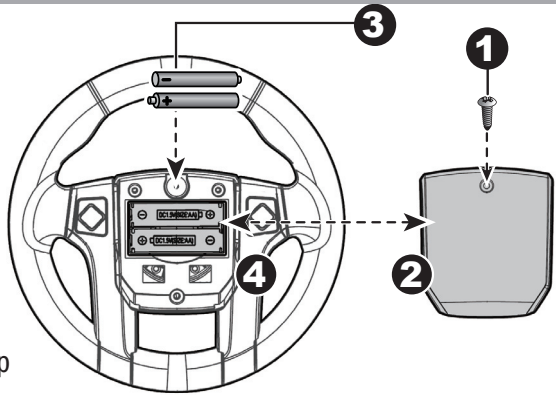
After assembling any wheel to the axles, please check the gap between the screw thread and the collapsible (refer to below picture), if the gap is too big, please add two or three washers inside the wheel, but after tightening the nut outside the wheel, please turn the wheel by your finger to check if the wheel can run smoothly, this is very important, because if the wheel can run smoothly, it is ok, but if the nut press the wheel and the wheel can't run smoothly, the motor will be broken easily! Then you need to decrease one or two washers to make sure the wheel can run smoothly!



## Attach the Steering Wheel | 9

**HINT:** If the steering wheel of your vehicle equipped with the sound function, please follow the steps 1-4 to add the batteries (Not Included), and refer to the battery information on page 2.

1. With a screwdriver remove the screw on the battery cover located in the center of the steering wheel.
2. Remove the battery cover from the top of the battery compartment.
3. Insert 2x1.5 AA batteries in their correct polarities.
4. Place the battery cover over the battery compartment and fasten with the screw you removed in step one.

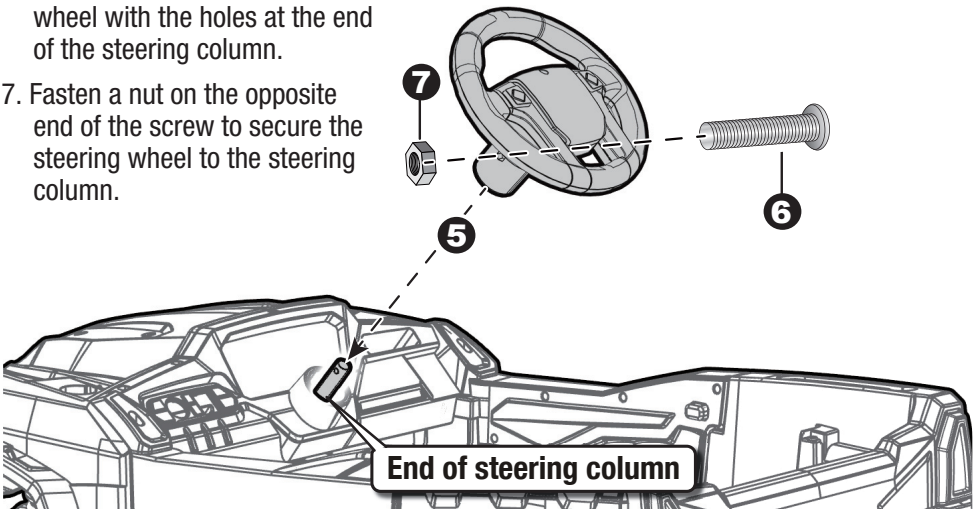


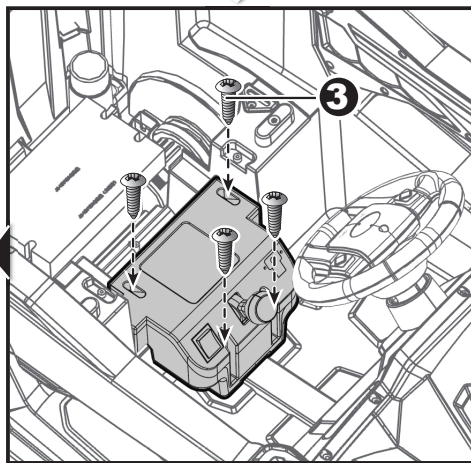
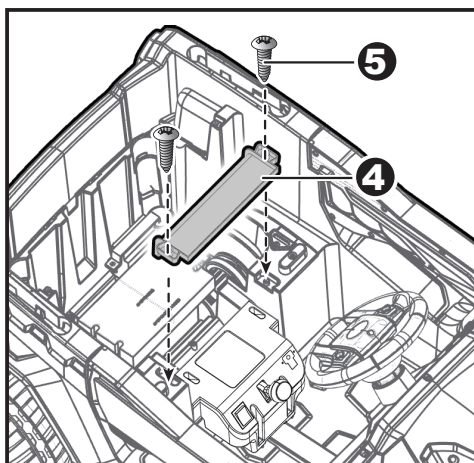
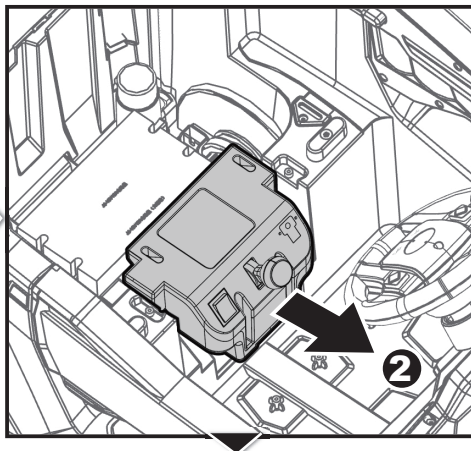
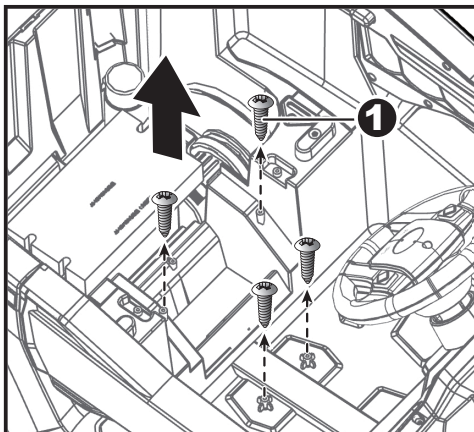
### Attach the Steering Wheel

Remove the M5x35 machine screw and  $\varnothing 5$  nut from the steering wheel.

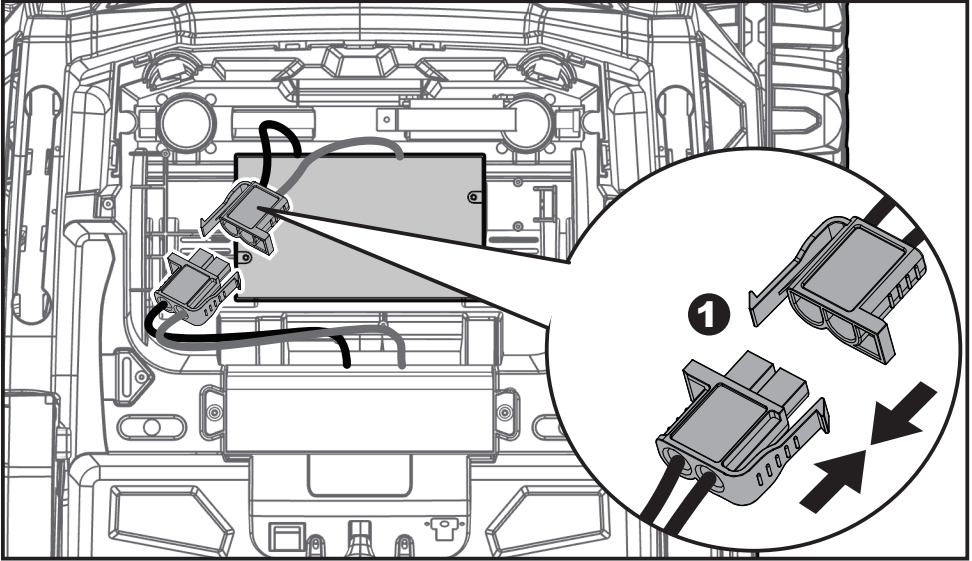
Turn the vehicle body upright.

5. Place the steering wheel over the the steering column, protruding from the middle of the steering wheel base.
6. Align the holes on each side of steering wheel with the holes at the end of the steering column.
7. Fasten a nut on the opposite end of the screw to secure the steering wheel to the steering column.

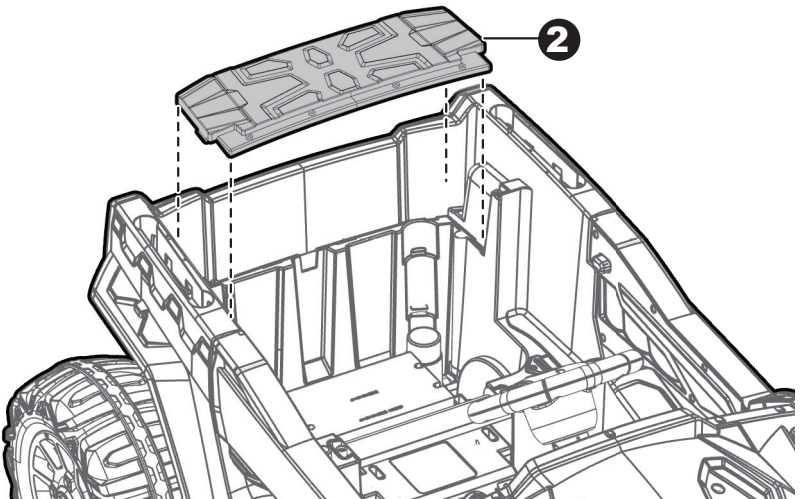


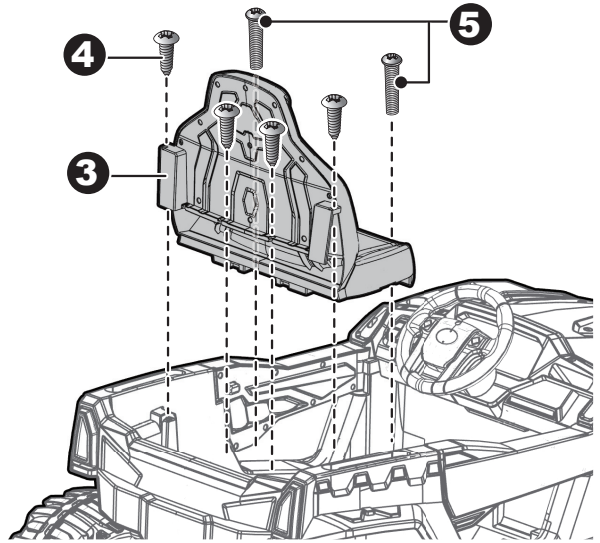
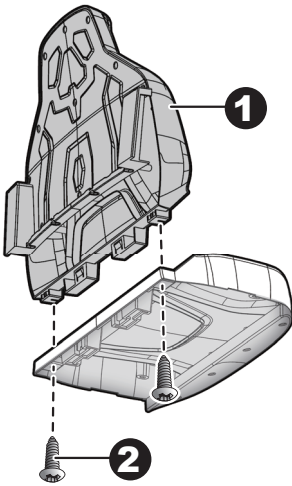


1. Lift up the shift lever assembly and remove the four **Ø4x12 round head screws** with a screwdriver.
2. Push the Shift Lever Assembly forward and locate it over the 4 screws mounting brackets as shown.
3. Secure it by tightening the four removed screws.
4. Fit the protecting board to the vehicle body.
5. Tighten securely with two **Ø4x12 flat head screws** with a screwdriver.

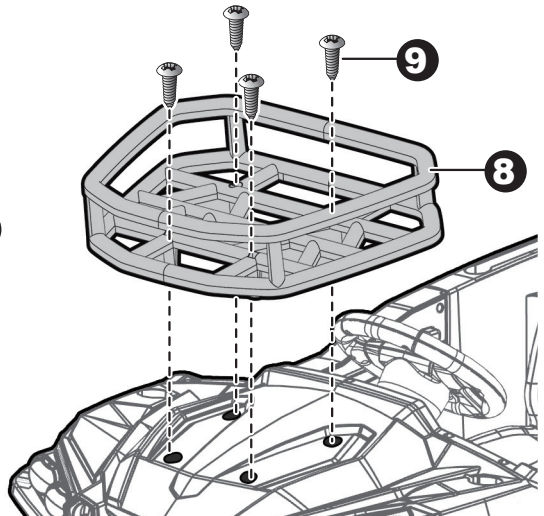
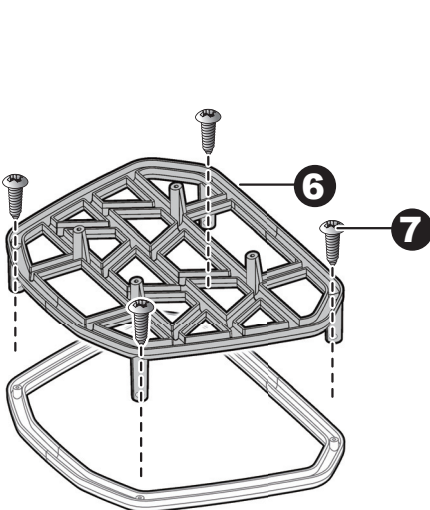


1. Plug the battery connector into the vehicle connector, push firmly.
2. Fit the tabs on the rear bed board into the slots located in the rear vehicle body, and press down until it “clicks” into place.



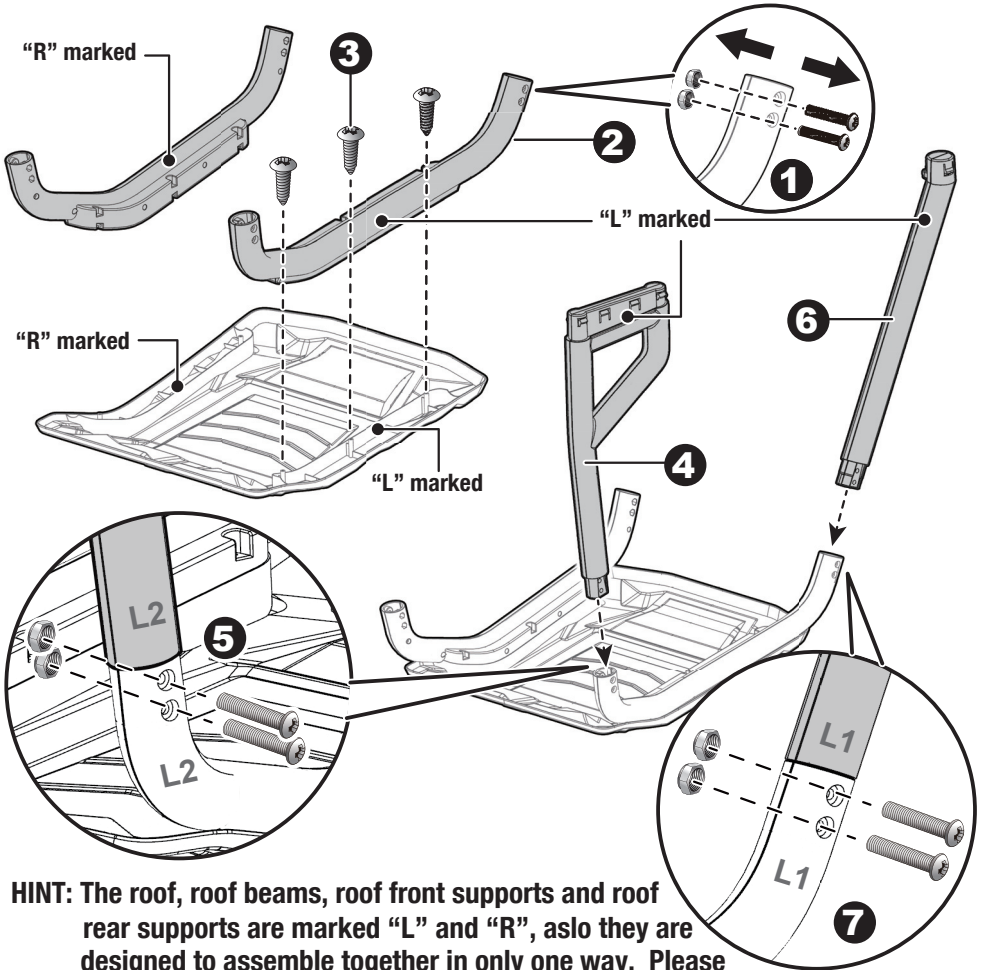


1. Fit the seat back to the seat.
2. Insert two  $\text{\O}4 \times 12$  flat head screws from the the bottom side of the seat, through the seat and into the seat back, and tighten.
3. Fit the seat assembly to the vehicle body.
4. Insert four  $\text{\O}4 \times 12$  flat head screws on the seat back and tighten.
5. Insert two  $\text{M}5 \times 16$  machine screws through the seat and into the vehicle body, and tighten with a screwdriver.
- 6-7. Fit the basket fence to the basket base, insert four  $\text{\O}4 \times 12$  flat head screws and tighten.
- 8-9. Fit the cargo basket to the bonnet. Insert four  $\text{\O}4 \times 12$  flat head screws and tighten.





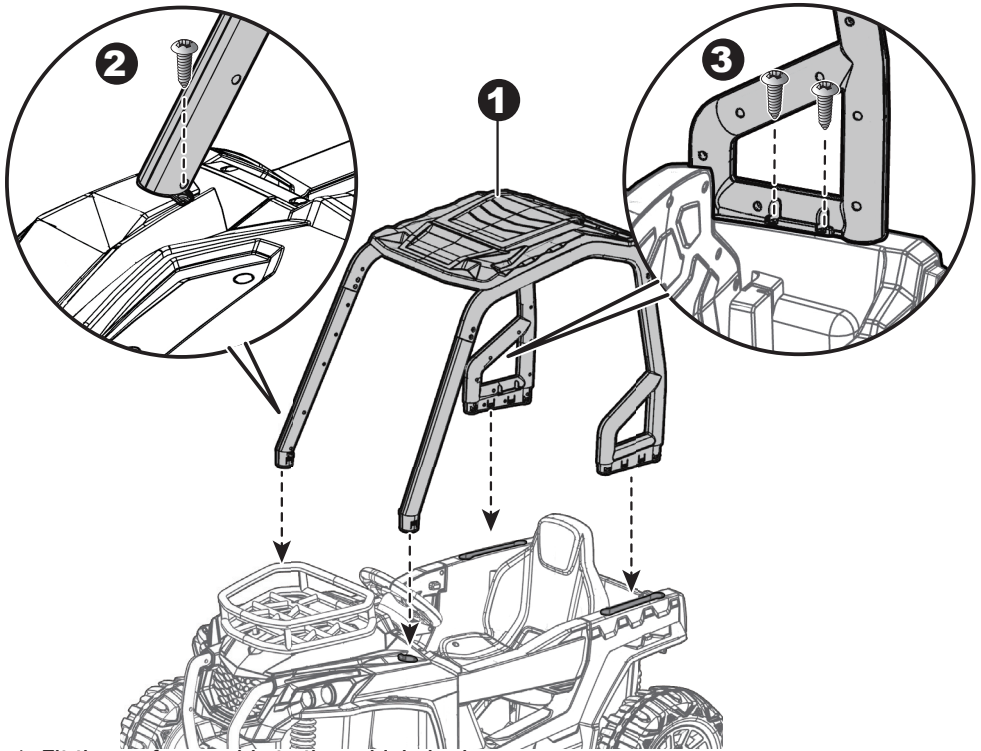
**HINT: The follow steps only for the type with roof.**



**HINT: The roof, roof beams, roof front supports and roof rear supports are marked “L” and “R”, aslo they are designed to assemble together in only one way. Please follow the guides: L to L (L1 to L1, L2 to L2), R to R (R1 to R1, R2 to R2)**

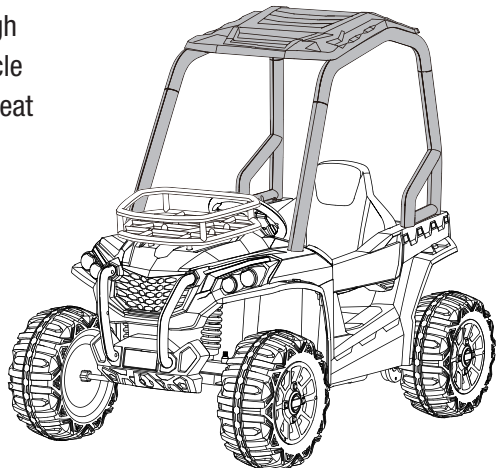
1. Using a screwdriver to remove the M5x25 machine screws and Ø5 nuts from the left and right roof beams.
2. Fit the both roof beams to the roof.
3. Insert three Ø4x12 flat head screws and tighten on each beam.
- 4-5. Fit the rear rollbar support to the roof beam, secure with M5x35 machines \*2 and Ø5 nut \*2 you removed in step one. Repeat for the other side. (L2 to L2, R2 to R2)
- 6-7. Fit the front rollbar support to the beam, secure with M5x35 machines \*2 and Ø5 nut \*2 you removed in step one. Repeat for the other side. (L1 to L1, R1 to R1)

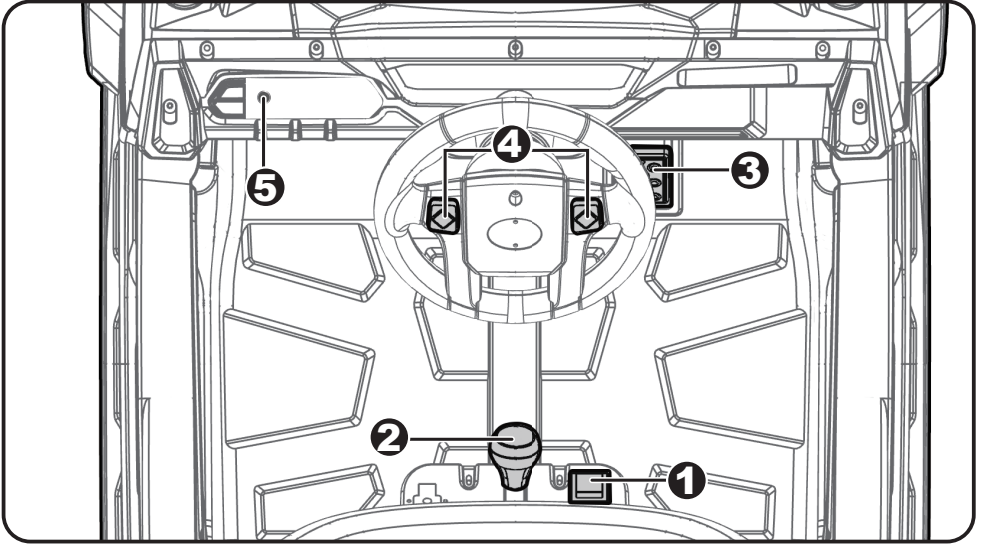
**HINT: The follow steps only for the type with roof.**



1. Fit the roof assembly to the vehicle body.
2. Insert a Ø4x12 flat head screw through the roof front support and into the bonnet, and tighten with a screwdriver. repeat for the other side.
3. Insert two Ø4x12 flat head screws through the rear rollbar support and into the vehicle body. and tighten with a screwdriver. repeat for the other side.

**Type with roof completed.**





1. **Power button:** Turns the vehicle on and off.
2. **Low speed forward/reverse shifter:** Changes the direction that vehicle moves from forward to reverse.
  - To move the vehicle forward, shift the lever to top position.
  - To move the vehicle backward, shift the lever to down position.
3. **Foot pedal:** Applies power (speed) to the vehicle.
  - To move the car, press the pedal down.
  - To brake or slow down, release pressure from the pedal.
4. **Sound buttons:** Press for sound playing.
5. **3.5mm AUX input:** Allow the audio from your portable music player or phone to be played through the vehicle speakers. MP3 format ONLY.

**⚠ IMPORTANT**

- **Always stop vehicle when changing the speed (if equipped) or direction to avoid damage the gears and motor.**

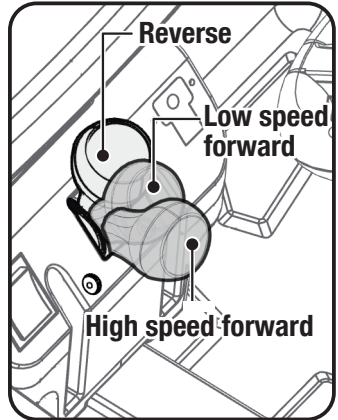
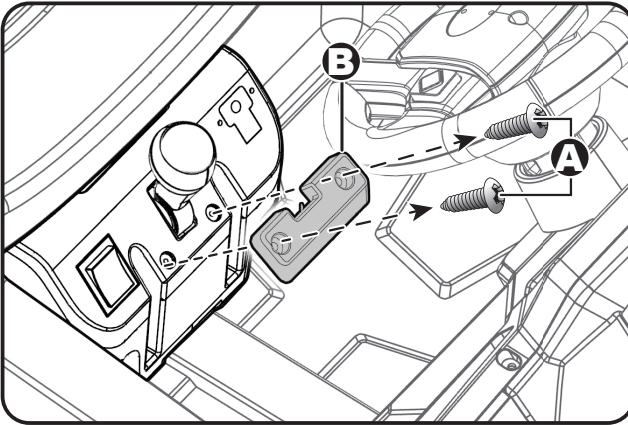


Use the vehicle on generally level ground ONLY!

DO NOT Use the vehicle on Lawn space!

## ⚠ IMPORTANT

- The High Speed Protective cover must be removed by an adult.
- Before remove the HIGH SPEED protective cover: Make sure your child knows how to steer, how to start and stop the product and knows the rules for safe driving.



- A. Remove the two screws on the top of the high speed protective cover with a screwdriver.
  - B. Remove the high speed protective cover.
- Then you can push the shifter into the “high speed” position.
- C. Press down the foot pedal.

**HINT: The product is designed to operate in low speed only in reverse.**

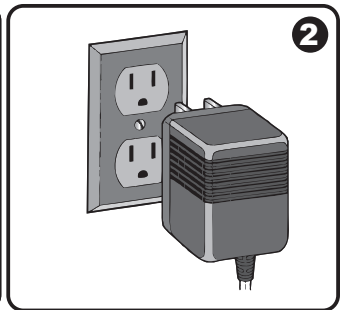
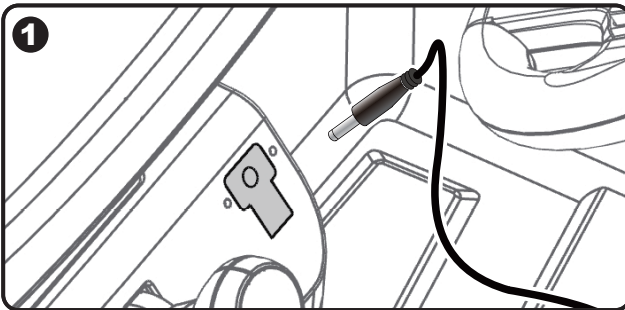


## **WARNING!**

- **ONLY an adult is allowed charge and recharge the battery!**
- **This product with Charging Protection: when charging, all functions will be cut off.**

- The POWER SWITCH must be turned in OFF position when charging.
- Before the first use, you should charge the battery for 4-6 hours. Do not recharge the battery for more than 10 hours to avoid overheating the charger.
- When the vehicle begins to run slowly, recharge the battery.
- After each use or once a month minimum recharge time as 8 to 12 hours, less than 20 hours at most.
- Use the only rechargeable battery and charger supplied with your vehicle. NEVER substitute the battery or the charger with another brand. Using another battery or charger may cause a fire or explosion.
- Do not use the battery or charger for any other product.
- If your ride-on with a Digital voltmeter(IF EQUIPPED), the magnitude of voltage will tell you how much power is remaining in the battery when you must recharge the battery. Make sure the vehicle is stop!

12V product	less than 12.5v	<b>The battery needs to be charge.</b>
24V product	less than 24v	



1. Plug the charger port into the input socket (the socket below the seat).
2. Plug the charger plug into a wall outlet. The battery will begin charging.

Problem	Possible Cause	Solution
Vehicle does not run	Battery low on power	Recharge battery.
	Thermal fuse has tripped	Reset fuse, see <Fuse>
	Battery connector or wires are loose	Check that the battery connectors are firmly plugged into each other. If wires are loose around the motor <b>contact your distributor please.</b>
	Battery is dead	Replace battery, <b>contact your distributor please.</b>
	Electrical system is damaged	<b>Contact your distributor please.</b>
	Motor is damaged	<b>Contact your distributor please.</b>
Vehicle does not run very long	Battery is under charged	Check that the battery connectors are firmly plugged into each other when recharging
	Battery is old	Replace battery, <b>contact your distributor please.</b>
Vehicle runs sluggishly	Battery low on power	Recharge battery, <b>contact your distributor please.</b>
	Battery is old	Replace battery, <b>contact your distributor please.</b>
	Vehicle is overload	Reduce weight on vehicle.
	Vehicle is being used in harsh conditions	Avoid using vehicle in harsh conditions, see <Safety>.
Vehicle needs a push to go forward	Poor contact of wires or connectors	Check that the battery connectors are firmly plugged into each other. If wires are loose around the motor, <b>contact your distributor please.</b>
	“Dead Spot” on motor	A dead spot means the electric power is not being delivered to the terminal connection and the vehicle needs repair. <b>Contact your distributor please.</b>
Difficult shifting from forward to reverse or vice-versa	Attempting to shift while the vehicle is motion	Completely stop the vehicle and shift, see <Use Your Ride-On>
Loud grinding or clicking noises coming from motor or gear box	Motor or gears are damaged	<b>Contact your distributor please.</b>
Battery will not recharge	Battery connector or adapter connector is loose	Check that the battery connectors are firmly plugged into each other.
	Charger not plugged in	Check that the battery charger is plugged into a working wall outlet.
	Charger is not working	<b>Contact your distributor please.</b>
Charger feels warm when recharging	This is normal and not a cause for concern	

Completely read through this manual and the troubleshooting guide table before calling. If you still need help resolving the problem **Contact your distributor please.**

