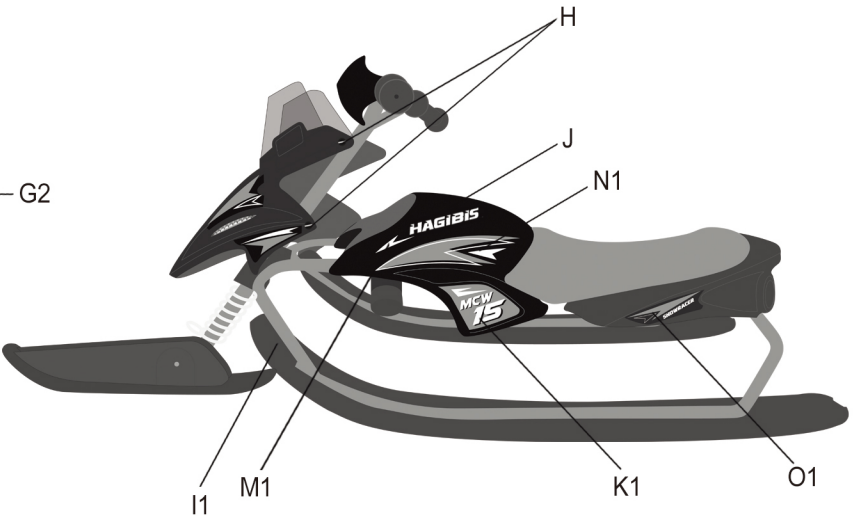
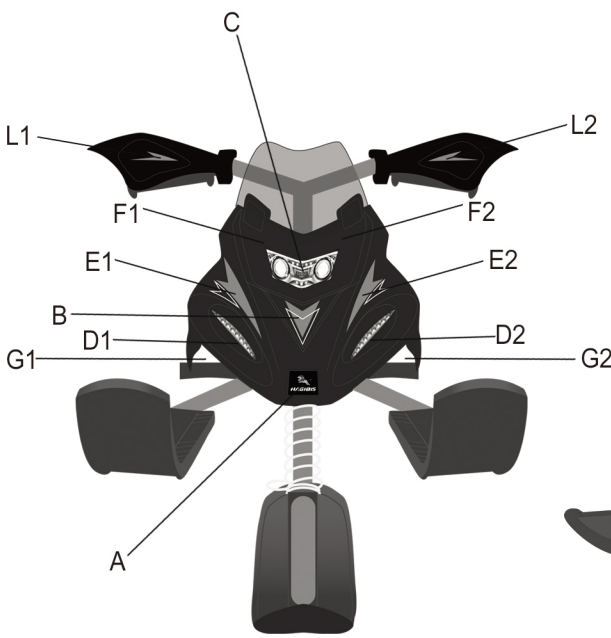
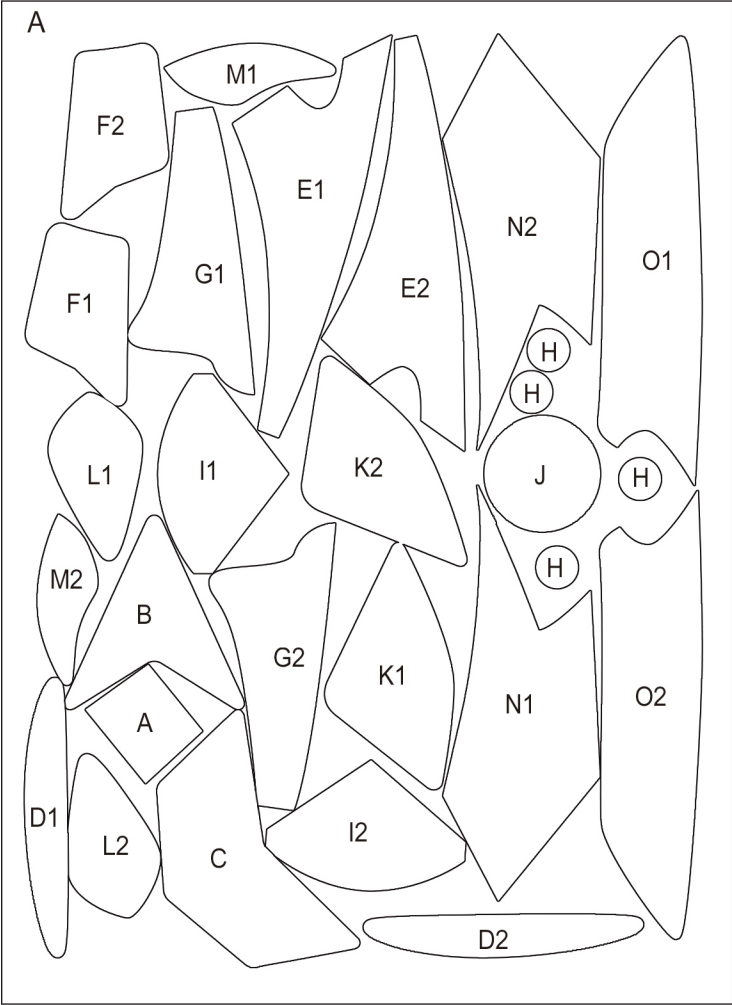


STICKER GUIDE



IMPORTANT



- This is the only correct riding position. (see Fig. 19)
- Check all screw parts and make sure they are properly tightened and in good working condition before using the product.
- Always wear protective equipment such as a helmet, goggles and gloves.
- Always keep the rider positioned near the front for increased control and steering. As body is shifted closer to the back the steering and control are reduced.
- The braking system does not allow for a quick short stop. It is solely intended as a way to gradually reduce the downhill speed.
- Be sure to learn and practice with lots of room and a shallow hill. You may progress to larger hills as you feel more confident.
- Make sure you have enough room to slow and stop in all situations.
- Always replace the tow leash handle and the Locking Buckle to the front ski before every use.
- DO NOT tow behind any motorized vehicle or people when rider seating on the product.

Soozier



USER MANUAL & SAFETY INSTRUCTIONS

Ultimate Slope-Side Snow Fun With The

330-027

MAX. WEIGHT OF RIDER
BELOW 88 lb (40 kg)

6+

Please read user manual as included in this package for product set-up
Adult Assembly Required

• **IMPORTANT INFORMATION INSIDE**
Read this User Manual carefully before using your winter product

WARNING

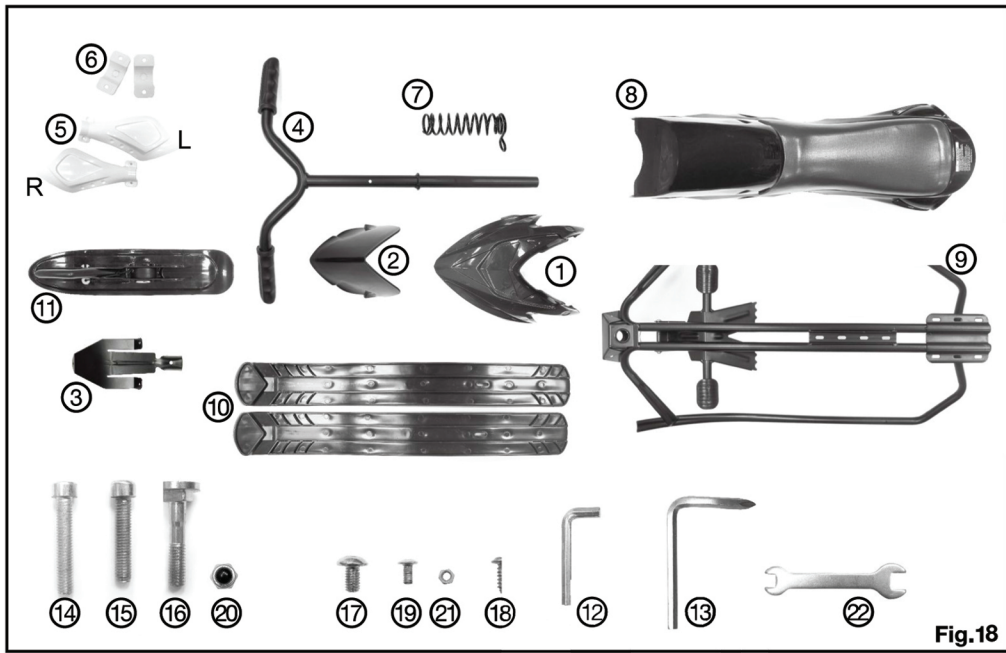
WARNING:
CHOKING HAZARD – SMALL PARTS.
NOT FOR CHILDREN UNDER (3) YEARS.

Adult Assembly Required

- To Avoid Injury:**
- Warning information in the User Manual, on the product and packaging must always be read before every use and explained to anyone using this product.
 - This product is designed for use by a person six (6) years of age and above. Competent adult supervision is required. Do not leave children unattended while using this product.
 - Use of this product and participation in this sport involves inherent risks of injury or death.
 - User **MUST** follow the instruction from User Manual and the Warning at all times, improper use of this product will cause serious injury or death.
 - This product must not be used by more than one (1) rider with a maximum weight of 88 lb (40kg) at a time. Do not exceed the recommended number of rider or weight capacity.
 - Always wear protective equipment such as a helmet, goggles and gloves.
 - This product is designed with limited braking and steering. Be aware this product can develop high speeds under certain snow conditions.
 - The metal snow braking system does not allow for a quick short stop. It is solely intended as a way to gradually reduce the downhill speed.
 - DO NOT tow behind any motorized vehicle on land or snow; this is not a towable item.
 - DO NOT tow behind any motorized vehicle or people when rider seating on the product.
 - Do not use on ski hills, icy surfaces, surfaces without adequate snow coverage and in obstructed or dangerous areas.
 - Do not use this product near roads, trees or other hazardous objects or conditions.
 - Do not dive head first onto this product.
 - Do not use this product while under the influence of drugs and alcohol.
 - Keep control of your sled at all times. It is your responsibility to avoid people and objects in front of you.
 - Always keep the rider positioned near the front for increased control and steering. As body is shifted closer to the back the steering and control are reduced.
 - Always replace the tow leash handle and the locking buckle to the front ski before every use.
 - Use at your own risk.
 - Do not use on steep slopes, only use on slopes with a low incline within your skill level.
 - Do not operate with poor or limited visibility.

PARTS DIAGRAM

1. Front Nose
2. Wind Shield
3. Metal Mount
4. Steering Column
5. Pro Grip Protectors x 2
6. Back Bracket x 2
7. Suspension Column
8. Seat
9. Main Frame
10. Side Ski x 2
11. Front Ski (Tow Handle & Automatic Retracted Tow Rope Device)
12. Allen Key
13. Screw Driver
14. Front Ski Bolt
15. Front Nose Bolt
16. Side Ski Bolt X 2
17. Seat Screw X 4
18. Wind Shield Screw X 1 and Metal Mount Screw X 3
19. Pro Grip Protectors Bolt X 4
20. Locknut (A) x 4
21. Locknut (B) x 4
22. Tighten

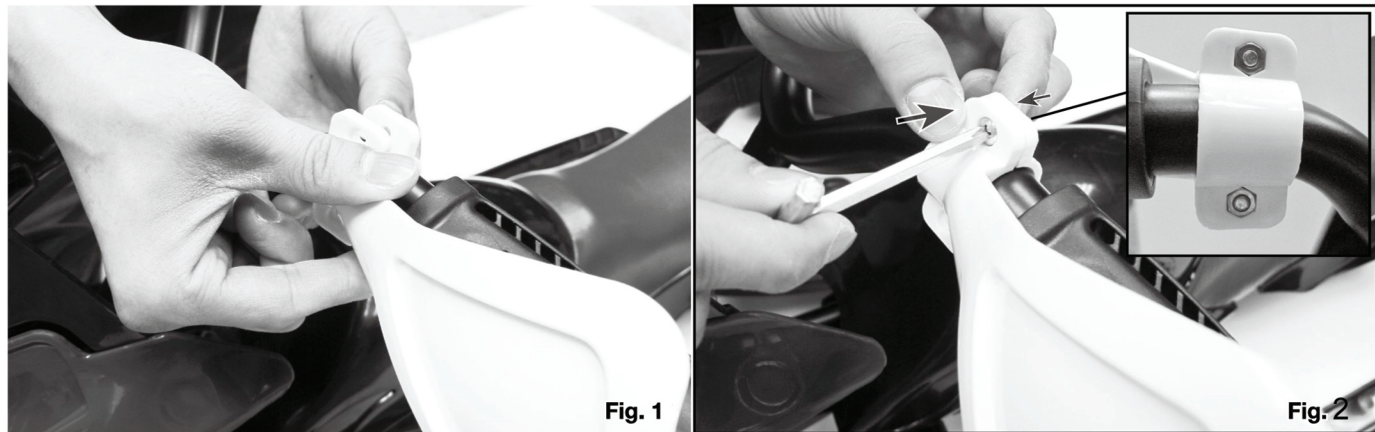


INSTALLATION

Only One Step to Complete

You only need to finish step 1, as step 2 to step 6 are previously assembled.

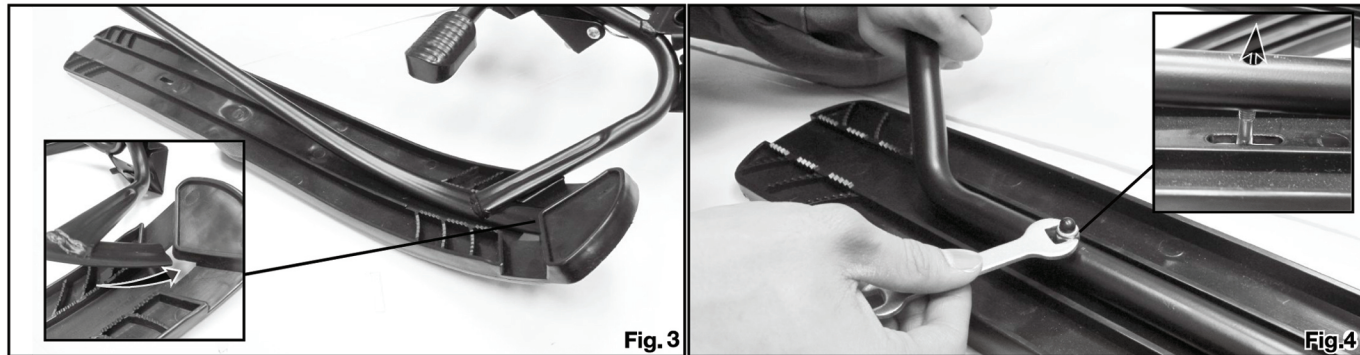
STEP 1 - PRO GRIP PROTECTORS ASSEMBLY



- 1 . To assemble the Pro Grip Protectors, place the front cover in the correct position as shown, then place the 2 Bolt and back bracket. (See Fig. 1)
- 2 . Screw the locknut on and tighten it well using the Screw driver provided. Repeat this step for other Pro Grip protector assembly. (See Fig. 2)
If you could not match well, change the right with the left front cover and try again.

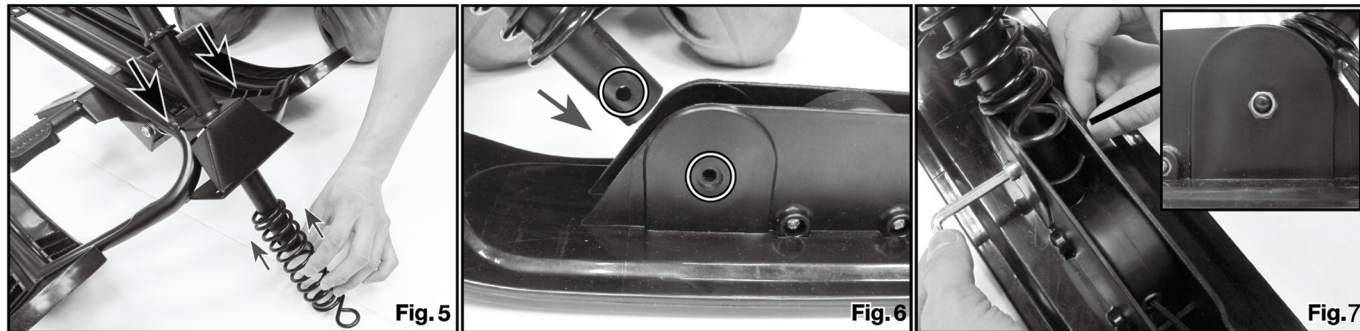
PREVIOUS ASSEMBLY INSTRUCTIONS

STEP 2 - SIDE SKI ASSEMBLY



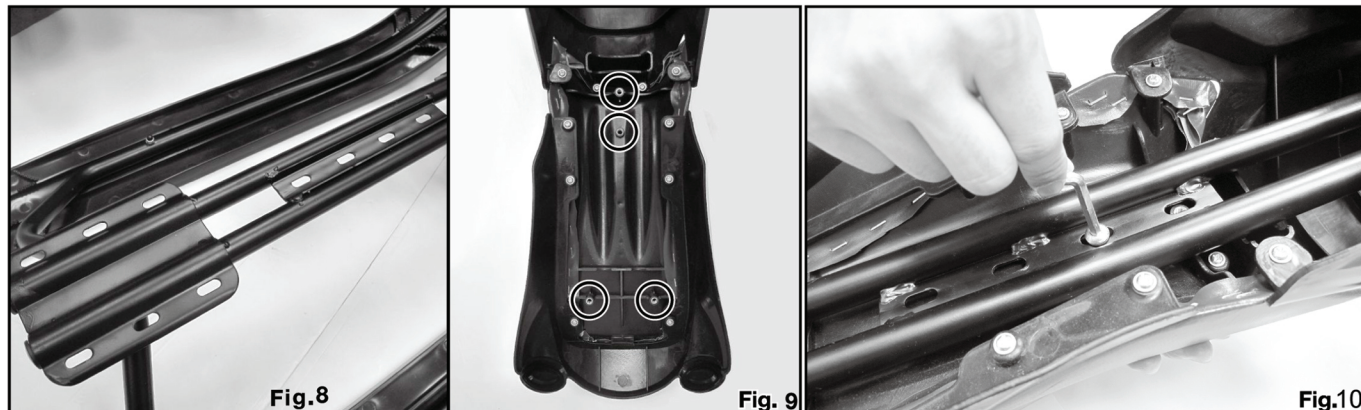
- 3 . Assemble the side ski by inserting the protruding steel tongue at the front of the main frame through the square hole at the top of the ski. (see Fig. 3)
- 4 . Fasten the side ski using the side ski bolts assembly. Pass the side ski bolt from the bottom of the ski up through the frame. Then, place the locknut and tighten it securely using the nut tightener. (see Fig. 4)
- 5 . Repeat the step 3 and 4 for Assembling other side ski.

STEP 3 - STEERING COLUMN AND FRONT SKI ASSEMBLY



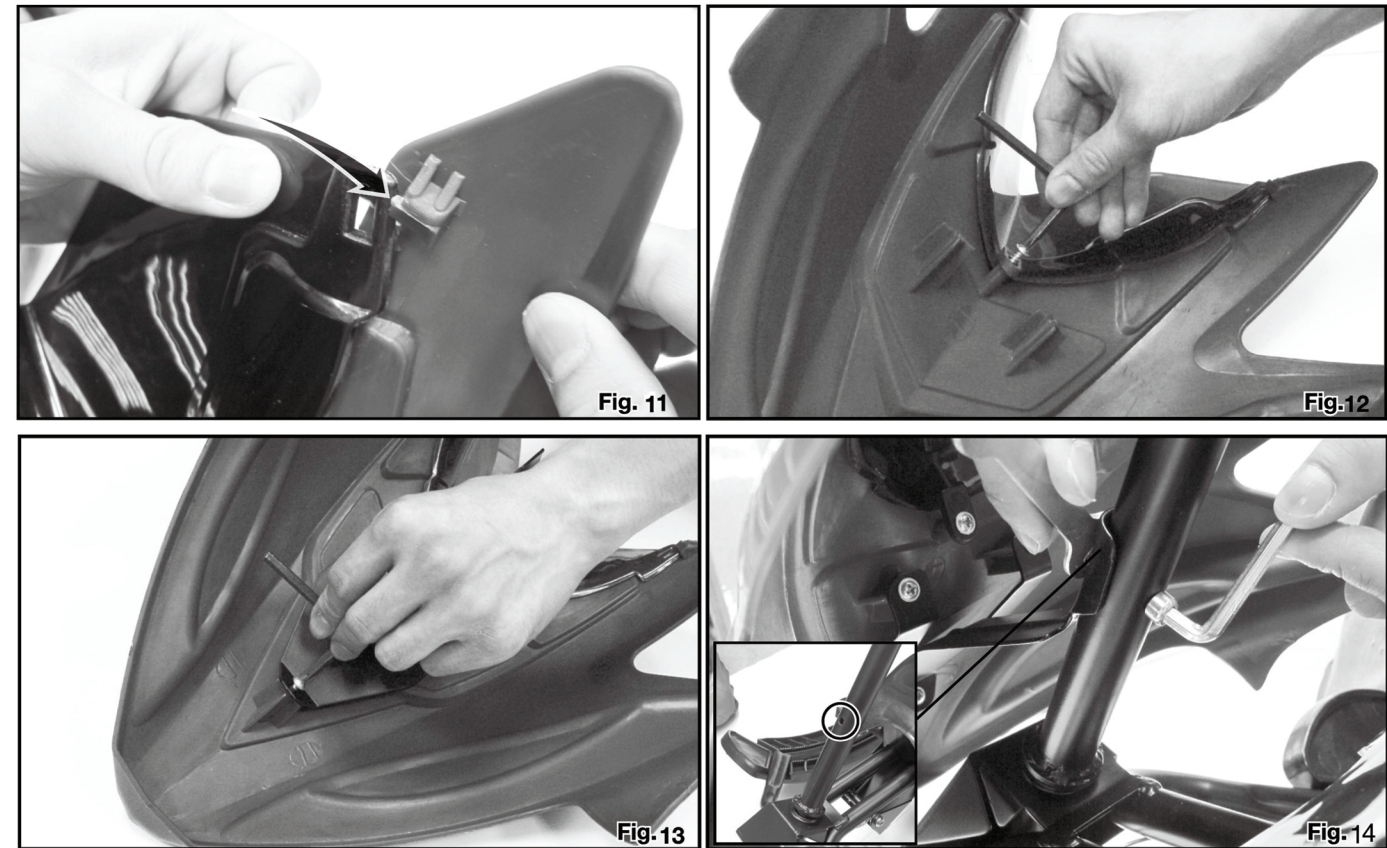
6. Insert the Steering Column to the front of the Main steel frame (See Fig. 5).
7. Insert the Suspension column to the Steering column as shown (See Fig. 5).
8. Insert end of the steering column into fitted cut away area on the Mount of the Front Ski. (See Fig. 6)
9. Align the bolt hole on the steering unit's end and the holes on the front Ski mount wall. (See Fig. 7)
10. Insert the front ski bolt, screw the locknut on and tighten it well using the Allen key provided. (See Fig. 7)

STEP 4 - ADJUSTABLE SEAT ASSEMBLY



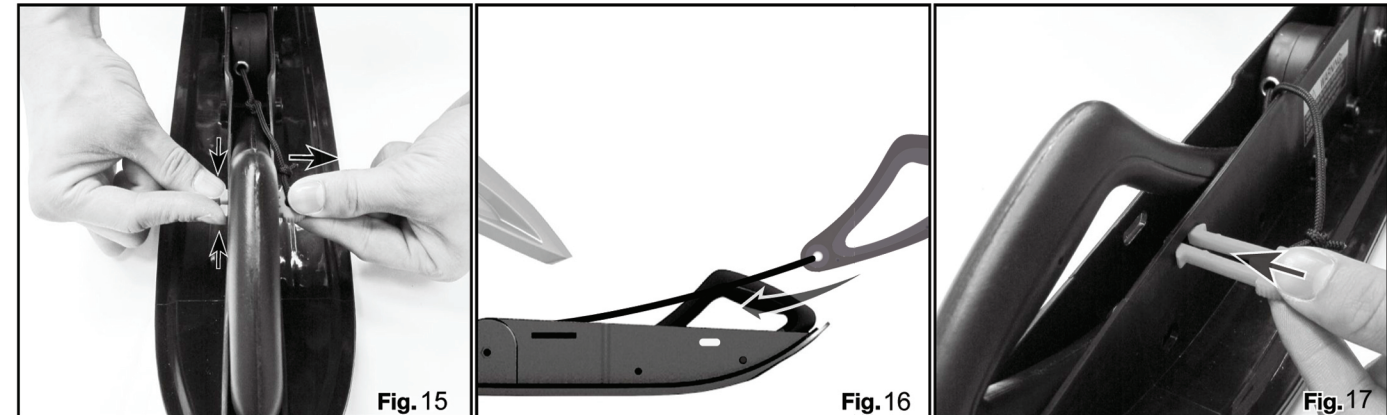
11. The seat can be mounted in one of three positions depending on the size of the rider. To begin your seat assembly, place the seat upside down with the upside down frame on top of it as shown.
12. Select your seat position by aligning the seat assembly points with the desired assembly slots on the frame. (See Fig. 8 & 9)
13. Attach the seat by inserting the 4 seat Screws through the seat position slots on the Frame and tightening into the seat assembly points using the Allen Key. (See Fig. 10)

STEP 5 - WIND WINDOW AND FRONT NOSE ASSEMBLY



14. Insert the wind shield to the front nose as shown on Fig. 11 . Make sure the end of the holes on the wind shield is locked into the nose.
15. Screw the wind shield Screw on and tighten it well using the screw driver provided. (See Fig. 12)
16. Attach the Metal mount to the front nose as shown and screw the three Screws on to fix it. (See Fig. 13)
17. Attached the other end of the Metal Mount to the Steering column and align the bolt hole. Insert the front Nose bolt, screw the locknut on and tighten it well using the Allen key and Nut Tightener provided. (See Fig. 14)

STEP 6 - USING THE AUTOMATIC RETRACTABLE TOW LEASH SYSTEM



18. The Automatic retractable tow leash system is designed to easily place and store your tow handle while riding. Release the safety buckle and take out the Tow leash handle from the Front Ski. (see Fig. 15)
19. To replace the Tow leash handle, insert the Handle into the mount of the Front Ski and the Tow Rope will be Automatically Retracted into the Tow Rope Device. (see Fig. 16)
20. Always replace the tow leash handle and the locking buckle to the front ski before every use. (See Fig. 17)