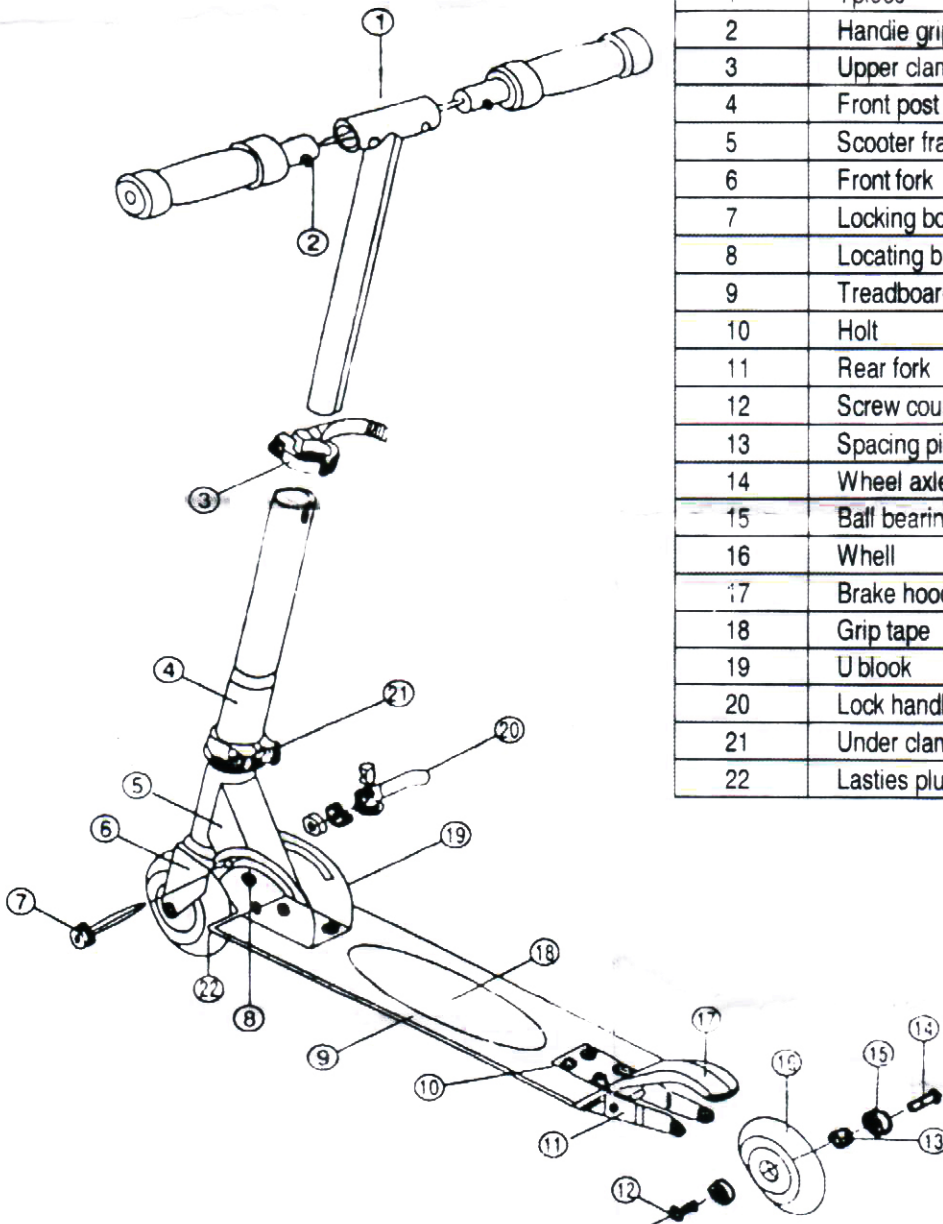


# SCOOTER

Part List

Part No.	Part Name	Quantity
1	Tpiece	1
2	Handle grip	2
3	Upper clamp	1
4	Front post	1
5	Scooter frame	1
6	Front fork	1
7	Locking bolt	1
8	Locating button	1
9	Treadboard	1
10	Holt	8
11	Rear fork	1
12	Screw coupling	2
13	Spacing piece	2
14	Wheel axle	2
15	Ball bearing	1
16	Wheel	2
17	Brake hood	1
18	Grip tape	1
19	U block	1
20	Lock handle	1
21	Under clamp	1
22	Lasties plug	1



## READ THIS INSTRUCTION CAREFULLY BEFORE USING THIS PRODUCT.

1. CHECK THE SCREWS, WHEELS AND HANDLES FOR ANY DEFECTS BEFORE USE.
2. THIS PRODUCT IS FOR RIDING ALONG GENTLY, PLEASE DO NOT MODIFY THIS PRODUCT IN ANY WAY
3. YOU MUST WEAR A SAFETY HELMET KNEE ELBOW AND WRIST GUARDS AT ALL TIMES RIDING THIS PRODUCT. DO NOT WEAR HIGH HEALED SHOES OR SHOES WITH SLIPPERY SHOES. AVOID WEARING HEADPHONES AND SUNGLASSES.
4. DO NOT RIDE ON ROADS WHERE THERE IS TRAFFIC, PEDESTRIANS OR ANY UNEVEN SURFACES.
5. THE BRAKE ON THIS PRODUCT WILL GIVE YOU LIMITED PROTECTION ON SLOPES. THUS BEWARE OF YOUR SPEED AND MAKE SURE YOUR BREAKING DISTANCE IS SUFFICIENT. AS IF YOU REDUCE YOUR SPEED TOO QUICKLY, YOU ARE LIABLE TO FALL.
6. PLEASE GRIP BOTH HANDLES WELL WHEN RIDING DECREASE YOUR SPEED WHEN TURNING OR NOT TRAVELLING IN A STRAIGHT LINE. AS YOU MAY FALL OR LOSE BALANCE.
7. THE WEIGHT LIMIT OF THIS PRODUCT IS 60KG OR LESS.
8. PLEASE GIVE DUE CARE AND ATTENTION TO PEDESTRIANS AND OTHER ROAD USERS.
9. DO NOT USE THIS PRODUCT IF YOU HAVE BEEN DRINKING ALCOHOL OR HAVE BEEN ON MEDICATION. OR HAVE TAKEN ANY ILLEGAL SUBSTANCES.
10. THIS PRODUCT IS SUITABLE FOR FUN DO NOT OVER ESTIMATE YOUR SKILLS. YOU SHOULD ADAPT THE SPEED TO YOUR ABILITY IF UNCERTAIN DO NOT USE THIS PRODUCT

## MAINTENANCE AND CARE

1. CHECK THE SCREWS REGULARLY TO AVOID FAILURE.
2. THIS PRODUCT CAN BE CLEANED BY NATURAL DETERGENT TO WIPE OFF DIRT, PLEASE AVOID USING INDUSTRIAL CLEANERS.
3. PLACE IN A WELL VENTILATED AREA. AWAY FROM SUNLIGHT OR DAMPNESS TO AVOID DISCOLORATION AND RUST
4. REPLACE THE WHEEL AND BEARINGS WHEN WORN OUT OR NOT OPERATING SMOOTHLY USE HEX WRENCH WHILST REPLACING.