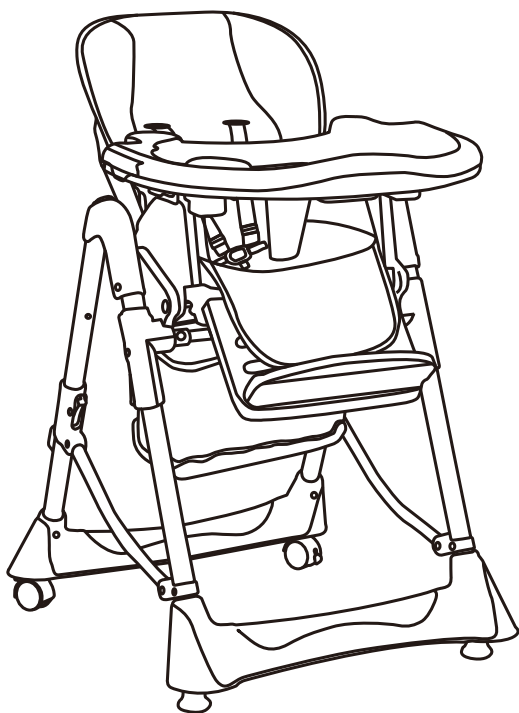




INSTRUCTION MANUAL



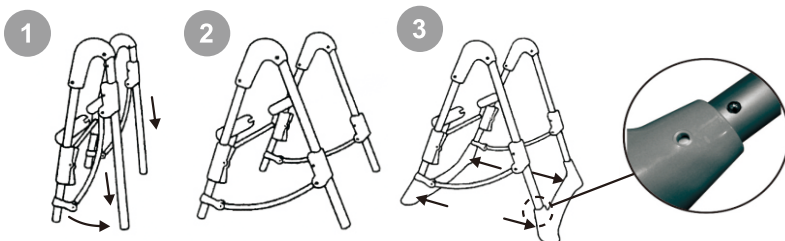
ASSEMBLING AND USING

FORWARD

Thank you for choosing our baby high chair. This highchair is carefully designed for baby's safety and features a large tray with cup holder and a wipe clean seat with five point harness. The high chair also folds compactly for storage. Suitable for children who are able to sit up unaided (approximately 6-9 months up to 36 months) .

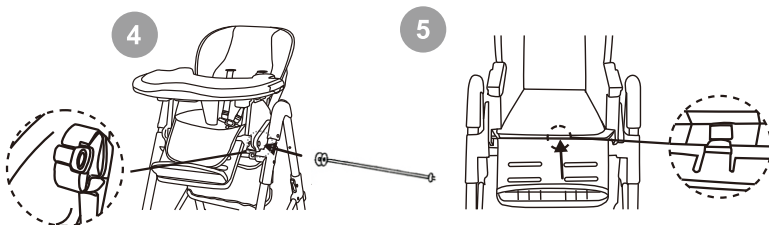
FRAME

1. Unpack the frame.
2. Press both red buttons on the rear tube and slide them down to open the rear tube.(1; 2)
3. Put front and rear tube into plastic bases, facing inside with rebound leaves. Fix the bases with 4 rebound leaves. (3)



SEAT

1. Hook the seat onto the seat support located on top of the frame. Make sure the attaching elements are properly engaged.
2. Secure seat with axle rod and attach clips on correct side.(4)
3. Insert part of footrest on left side, then another part on right side. Continue simultaneously to insert the footrest from left to right until it is installed completely. (5)



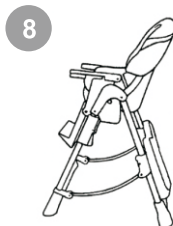
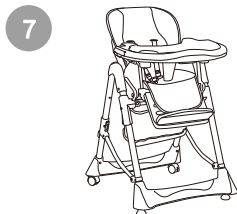
WHEELS

1. Unpack the wheels.
2. Turn frame to side position.
3. Insert the wheels into plastic base.(6)



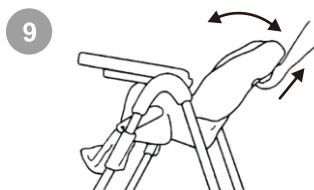
TRAY

1. Hold either side of tray adjustment levers and pull out.(7)
2. The tray can be adjusted in 3 positions.
3. The tray can be removed and hanged up on the red button on the rear tube.(8)



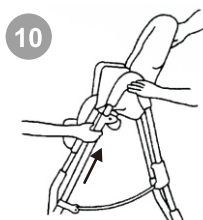
RECLINE BACKREST

1. Pull the backrest adjustment lever upward to release the backrest.
2. Adjust the seat and engage the lever in the new position.(9)
3. The backrest can be adjusted while your child is on the seat.



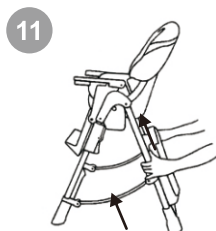
ADJUSTING THE HEIGHT OF THE SEAT (5 positions)

1. Stand in front of the high chair.
2. Press and hold the two red buttons under seat at the same time.
3. Lift or lower the seat to desired position.
4. Release the buttons to secure the seat at the required height.(10)
5. To adjust the seat to highest level hold the frame with one hand and with the other hand pull upward the lever on top of backrest to required position.(10)



FOLDING HIGH CHAIR

1. Unfasten restraint harness and remove your child from the high chair.
2. Remove the tray and hang it up on the rear tube.
3. Stand behind the high chair. Move your body down, press two red buttons on either side of rear tube and push the rear tube upward until click to indicate that the high chair is secured in closed position.(11)



WARNING

1. **WARNING!** DO NOT LEAVE THE CHILD UNATTENDED!
2. **WARNING!** MAKE SURE THE HARNESS IS CORRECTLY FITED!
3. **WARNING!** DO NOT USE THE HIGH CHAIR UNLESS ALL COMPONENTS ARE CORRECTLY FITTED AND ADJUSTED!
4. **WARNING!** DO NOT USE THE CHAIR NEAR OPEN FIRE AND HEATING DEVICES!
5. **WARNING!** DO NOT USE THE HIGH CHAIR UNTILL YOUR CHILD START TO SIT WITHOUT ASSISTANCE!
6. **WARNING!** DO NOT USE THE HIGH CHAIR IF THERE IS A BROKEN,DAMAGED OR MISSING PART!
7. **WARNING!** ALWAYS USE THE CHAIR WITH A HARNESS SYSTEM!
8. **WARNING!** PERIODICALLY CHECK THE BUTTONS AND HARNESS SYSTEM FOR SAFETY!
9. **WARNING!** ALWAYS USE THE CHAIR ON A FLAT EVEN SURFACE!
10. **WARNING!** KEEP THE CHAIR AWAY FROM CHILDREN WHEN DON'T USE IT!
11. **WARNING!** THE CHAIR MUST NOT BE USED AS A TOY!
12. **WARNING!** ALWAYS ENSURE THAT THE HIGH CHAIR HAS BEEN ASSEMBLED CORRECTLY BY FOLLOWING THE INSTRUCTION SHEET PROVIDED. FAILURE TO DO SO CAN CAUSE HARM TO YOUR CHILD!
13. **WARNING!** DO NOT ALLOW YOUR CHILD TO STAND UP WHILST IN THE HIGH CHAIR!
14. **WARNING!** ENSURE YOUR HIGHCHAIR IS FULLY ERECTED BEFORE PLACING YOUR CHILD INSIDE!
15. **WARNING!** REGULARLY CHECK ALL PARTS FOR WEAR OR BREAKS!
16. **WARNING!** PLEASE KEEP THIS MANUAL FOR FURTHER REFERENCE!
17. **WARNING!** PLEASE ENSURE THAT THE HIGH CHAIR IS ASSEMBLED BY AN ADULT!

CLEANING & CARE

1. Clean all fabrics with warm water and mild soap. Let them dry.
2. Heavy dirty spots clean with non abrasive cream.
3. Oil all movable parts regularly.